



Ruth Nangle Trophy and Jeanette Turnbull Trophy

SUPPLEMENT TO RMYS SAILING INSTRUCTIONS 2023-24

Amendments

<u>Date Issued</u>	<u>Amendment Number</u>	<u>Details</u>
<u>24/11/2023</u>	<u>1</u>	<u>1.9 Clarify radio in point</u> <u>9.3 Exclusion Zone</u> <u>8.2 RGYC Start Line</u> <u>10.1 RGYC Finish Line</u>

The races are organised and conducted by the Royal Melbourne Yacht Squadron (RMYS).

1. Rules

1.1. The event will be governed by;

- the rules as defined in World Sailing Racing Rules of Sailing (RRS) 2021-2024 and Australian Sailing (AS) prescriptions,
- RMYS Sailing Instructions 2023-2024 and amendments,
- these Ruth Nangle and Jeanette Turnbull Supplementary Sailing Instructions,
- the AMS rating system,
- the ORC rules (including ORC_c and ORC_i ratings),
- the Yachting Victoria handicap system and
- the requirements of the Port of Melbourne Corporation (PoMC).

1.2. Australian Sailing (AS) special regulations Part 1 Sections 1-6, Category 6 for racing boats shall apply.

1.3. All yachts shall complete a crew declaration using the Memberpoint app.

1.4. No anchor shall be carried on deck forward of the stem or with any part protruding outboard.

1.5. Spinnakers are permitted for the pursuit race.

1.6. All yachts will need to sign on via radio (Ch. 72) before the warning signal of each race. Failure to do so may result in being scored DSQ.

1.7. All yachts must give way to commercial vessels. Failure to do so may result in being scored DSQ.

1.8. All yachts must radio support vessel William Paterson (VHF Channel 82) as soon as practical after passing Hopetoun Channel Marker #8 during the Ruth Nangle Trophy. Failure to do so may result in being scored DSQ.

1.9. All yachts must radio the Squadron Tower (VHF Channel 72) as soon as practical after passing abeam of Fawkes Beacon during the Jeanette Turnbull Trophy. Failure to do so may result in being scored DSQ.

2. Notices to Competitors

Notices to competitors will be posted on the RMYS online notice board. Registered boat owners may be notified by email or SMS.

3. Changes to Sailing Instructions

Registered boat owners may be notified by email or SMS by 0730 on 25 November 2023 and by 0830 on 26 November 2023 or over the radio on VHF Channel 72 after the sign-on schedule for the day. They may also be posted on the RMYS online notice board.

4. Signals Made Ashore

Signals will be displayed from the RMYS flagpole (Saturday) and the flagpole of RGYC (Sunday) located on the clubhouse lawn.

5. Schedule

Day	Date	Warning Signal	Event	Type
Saturday	25 November 2023	0855	Ruth Nangle Trophy	Passage/Pursuit
Sunday	26 November 2023	0925	Jeanette Turnbull Trophy	Passage

6. Racing Areas

The race will be conducted on the waters of Corio Bay and Port Phillip.

7. Radio Communication

Race date	Sign on (Ch – VHF Channel)	Start	Race duration	Radio Point	Finish
25/11/2023	RMYS Tower Ch 72	RMYS Tower Ch 72	Ch 82	William Paterson Ch 82	RG Base Ch 71
26/11/2023	William Paterson Ch 72	RG Base Ch 71	Ch 82	RMYS Tower Ch 72	RMYS Tower Ch 72

- 7.1. A pre-race sign on schedule will be conducted by RMYS on VHF channel 72. Yachts will be called in the order they appear on the starters list, 30 minutes prior to their allocated start time (Ruth Nangle) and 30 minutes prior to the warning signal (Jeanette Turnbull).
- 7.2. The yachts shall respond with: “(Yacht Name) is a starter, (xx) POB.”
- 7.3. Yachts who do not respond on the first call, shall wait until they are called a second time at the end of the sign on procedure. Yachts who fail to sign on will be scored DNS without a hearing. This changes RRS 63.1.
- 7.4. From the start until the yacht is required to radio in to RMYS , all communications to be on VHF Channel 82.
- 7.5. Except during the pre-race sign on procedure or in an emergency, a boat that is racing shall not make voice or data transmissions and shall not receive voice or data communication not available to all boats.

8. The Start

- 8.1. The Start Line for the Ruth Nangle Trophy will be a RMYS Tower Pursuit Start as described in the RMYS Sailing Instructions 2023-2024.
- 8.2. The start line will be between the Signal Box at the north-west corner of the RGYC Marina and the five knot special mark. (Refer Appendix C).
Code Flag F will be the Class flag.

9. The Courses

- 9.1. The Courses for the Ruth Nangle Trophy and Jeanette Turnbull Trophy are tabled in Appendix A. They include the order in which marks are to be passed, and the side on which each mark is to be passed when rounding.

- 9.2. Please keep well clear of Mussel Spat Culture zones and use extreme caution to avoid the sand bar outside the line of the Hopetoun Channel between Beacons 3 and 9.
- 9.3. The Point Wilson Explosives Pier is surrounded by a total exclusion zone of 300 metres when no ships present. Two hours prior to arrival and whilst ships are docked, the exclusion zone is extended to 1400 metres to the east and south, and 2000 metres to the north. When shipping is expected and present the extended exclusion zone is activated and the perimeter yellow buoys will show a flashing light (Quick flash 3 seconds.) A fine of up to \$10,000 may be imposed for entry to this area, accidental or not. The area is under constant video surveillance and competitors must make themselves aware of the exact zone limits.. Any vessel passing within the bounds of the exclusion zones marked in red will be scored DSQ without a hearing. This changes RRS A5.1
Skippers should refer to the Harbour Master's Directions and VOZR ("Victorian Operating and Zoning Rules") available here <https://safetransport.vic.gov.au/wp-content/uploads/2023/09/VOZR.pdf>.

10. The Finish

- 10.1. The finishing line will be between the Signal Box at the north-west corner of the RGYC Marina and the five knot special mark. (Refer Appendix C)
Yachts shall not cross the finish line unless finishing.
- 10.2. The Finish Line for the Jeanette Turnbull Trophy will be a Breakwater Finish as described in the RMYS Sailing Instructions 2023-2024.

11. Shortening Courses

- 11.1. The Race Office may choose to shorten the course if weather conditions warrant it.
- 11.2. The course may be shortened at any mark using the normal RRS procedure.
 Notification will be given to the Fleet, through a radio broadcast on VHF Channel 82, prior to the lead yacht reaching the mark at which the course is to be shortened.
 A finish boat displaying the Shorten Course Signal (S - Sierra) may be on station at that mark.
 In the event no finish boat is on station, competitors shall pass within 20 metres of the mark and record the time. The relative location of the nearest competing yacht at the time of finishing shall also be recorded.
 The self-recorded finish time shall be sent by SMS to RMYS on 0493 363 062 within 30 minutes of crossing the shortened course finish.

12. Time Limit

Any yacht finishing after the designated time limit shall be scored DNF.

Day	Date	Time Limit
Saturday	25 November 2023	1700hrs
Sunday	26 November 2023	1800hrs

13. Retirement

Yachts retiring shall contact *William Paterson* on Channel 82, and notify them of the condition of the crew and the port they intend to retire to.

Within one hour of arrival at a safe harbour, contact shall be made with RMYS on the Race Channel or the Race Officer's telephone to confirm safe arrival.

Day	Date	RO phone number
Saturday	25 November 2023	0419 604 196
Sunday	26 November 2023	0408 5043 60

14. Protests and Requests for redress

Protests and request for redress shall be lodged in accordance with the RMYS Sailing Instructions 2023-2024.

15. Disclaimer of Liability

Competitors participate in the race entirely at their own risk. See rule 3, Decision to Race: “*The responsibility for a boat’s decision to participate or to continue racing is hers alone.*” The Organising Authority will not accept any liability for material damage, personal injury or death sustained in conjunction with, prior to, during or after the races.

16. Insurance

Each participating yacht shall be insured with valid third party liability insurance with a minimum cover of AUD 10 million or the equivalent.

17. Further Information

Boating Administrator

Phone: 03 9534 0227

Email: boating@rmys.com.au

APPENDIX A

Ruth Nangle Trophy

Course 1

COURSE MARK	MARK DESCRIPTION	REQUIRED SIDE
STARTING LINE	RMYS A mark and RMYS tower.	A mark to starboard
T1	Transit Beacon 38° 00.00' S, 144° 55.66' E passing Fawkner Beacon (CHANNEL Beacon (approx. S 37° 56.93' E 144° 56.61') to starboard	Starboard
T2	Transit Beacon 38° 00.00' S, 144° 54.87' E	Starboard
HOPETOON CHANNEL 1	CHANNEL Beacon No. 1 (approx. S 38° 07.05' E 144° 26.76')	Starboard
HOPETOON CHANNEL 10	CHANNEL Beacon No. 10 (approx. S 38° 07.40' E 144° 24.12') (Take care of water depth outside the marked channel from this beacon through to Beacon No. 1)	Port
FINISHING LINE	Between the Royal Geelong Yacht Club (RGYC) signal box at the north-west corner of the RGYC Marina and the five knot special mark (Refer Appendix C)	

Jeanette Turnbull Trophy

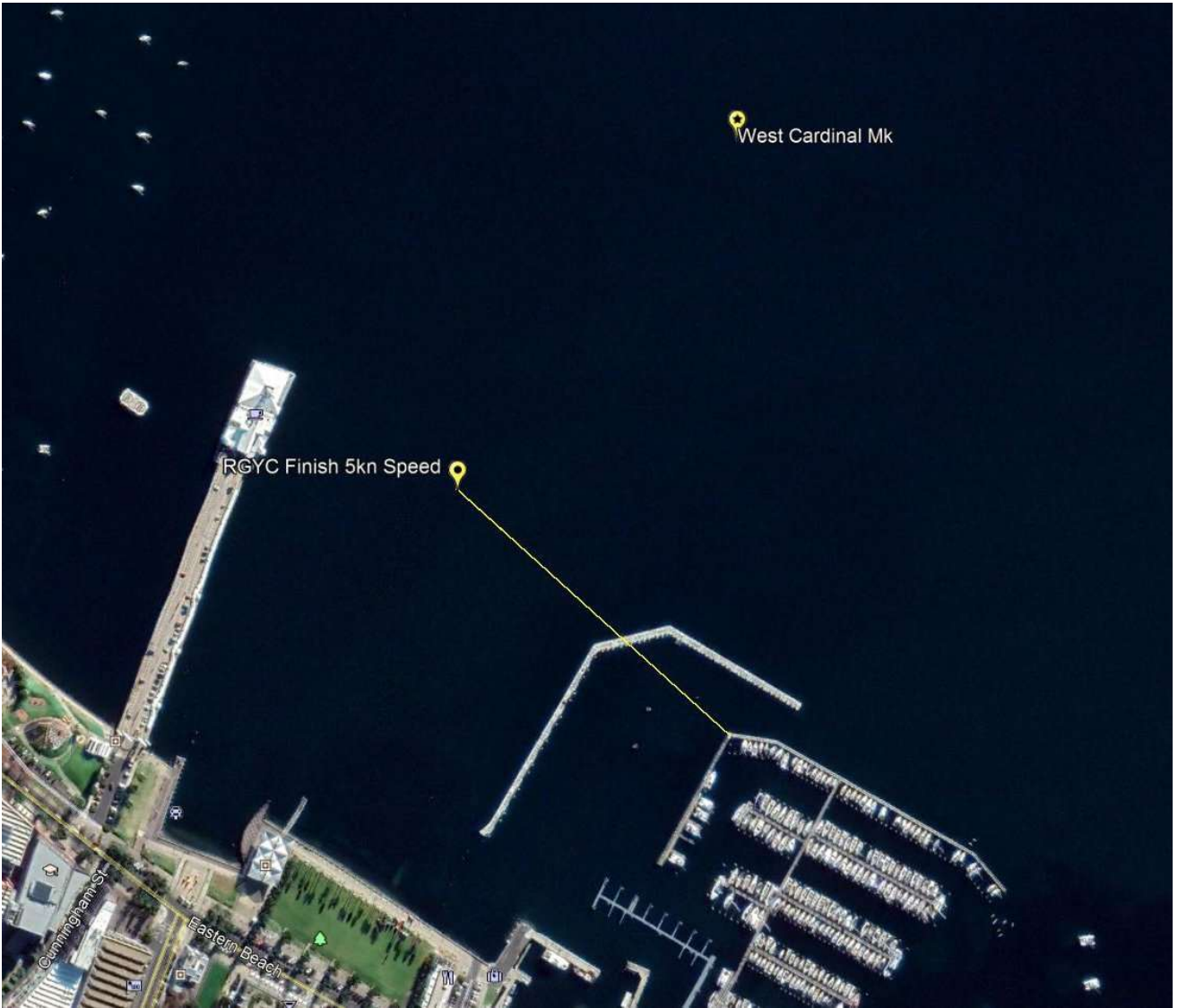
Course 1

COURSE MARK	MARK DESCRIPTION	REQUIRED SIDE
STARTING LINE	<u>Between the Royal Geelong Yacht Club (RGYC) signal box at the north-west corner of the RGYC Marina and the five knot special mark</u>	
HOPETOUN CHANNEL 10	CHANNEL Beacon No. 10 (approx. S 38° 07.40' E 144° 24.12') (Take care of water depth outside the marked channel from this beacon through to Beacon No. 1)	Starboard
HOPETOUN CHANNEL 1	CHANNEL Beacon No. 1 (approx. S 38° 07.05' E 144° 26.76')	Port
T2	Transit Beacon 38° 00.00' S, 144° 54.87' E	Port
T1	Transit Beacon 38° 00.00' S, 144° 55.66' E passing Fawkner Beacon (CHANNEL Beacon (approx. S 37° 56.93' E 144° 56.61') to port	Port
RMYS E-mark	Yellow truncated cone passing Fawkner Beacon (CHANNEL Beacon (approx. S 37° 56.93' E 144° 56.61') to port.	Port
FINISHING LINE	RMYS A mark and RMYS tower.	A mark to port

APPENDIX B - Deleted

APPENDIX C

RGYC Signal Box Start and Finish Line



APPENDIX D–

Be safe around commercial shipping.

Due to the density of traffic, shipping channels and their approaches are areas where the interaction between large ships and small craft can be particularly hazardous. Small boat operators should exercise caution in the vicinity of these areas and must avoid impeding the passage of vessels which can safely navigate only within the confines of a shipping channel or fairway. This is true when yacht racing and when travelling to and from.

Due to the speed of approach of commercial shipping it is important to keep a good lookout astern as well as ahead. Constant bearings between vessels are an indicator of a collision course.

When taking action to avoid a collision, avoid small alterations of course and speed, make bold alterations to make it readily apparent to the commercial vessel you are keeping well clear – do not leave action to the last minute as when sailing close to a large vessel its size could well rob a yacht of the wind, making it difficult to manoeuvre at a potentially critical moment in the interaction between the two vessels.

If you are hearing 5 or more short horn blasts from a commercial vessel, you are already too close and/or your intentions are not clear.

Regarding communication, each boat is required by Special Regulations Category 6 to carry a VHF radio in working order. The Race Committee will be communicating to competitors on Ch 72 or Ch 82 as specified in Paragraph 7 which may include important race information and navigational warnings. It is highly recommended that it is switched on and monitored. If a competitor wishes to communicate with a ship or listen to traffic information from Melbourne VTS, they may do so on Ch 12. If a boat is fitted with Automated Identifying System (AIS) it is highly recommended that it is switched on and monitored.

Attention is drawn to Harbour Master's Directions Section 5 which states among other things that all recreational vessels shall keep clear of all commercial vessels over 50m, if in doubt assume it is over 50m, and all tugs and line boats assisting in the movement and berthing of another vessel.

Attention is also drawn to International Rules for the Prevention of Collision at Sea Rule 5 – Lookout