

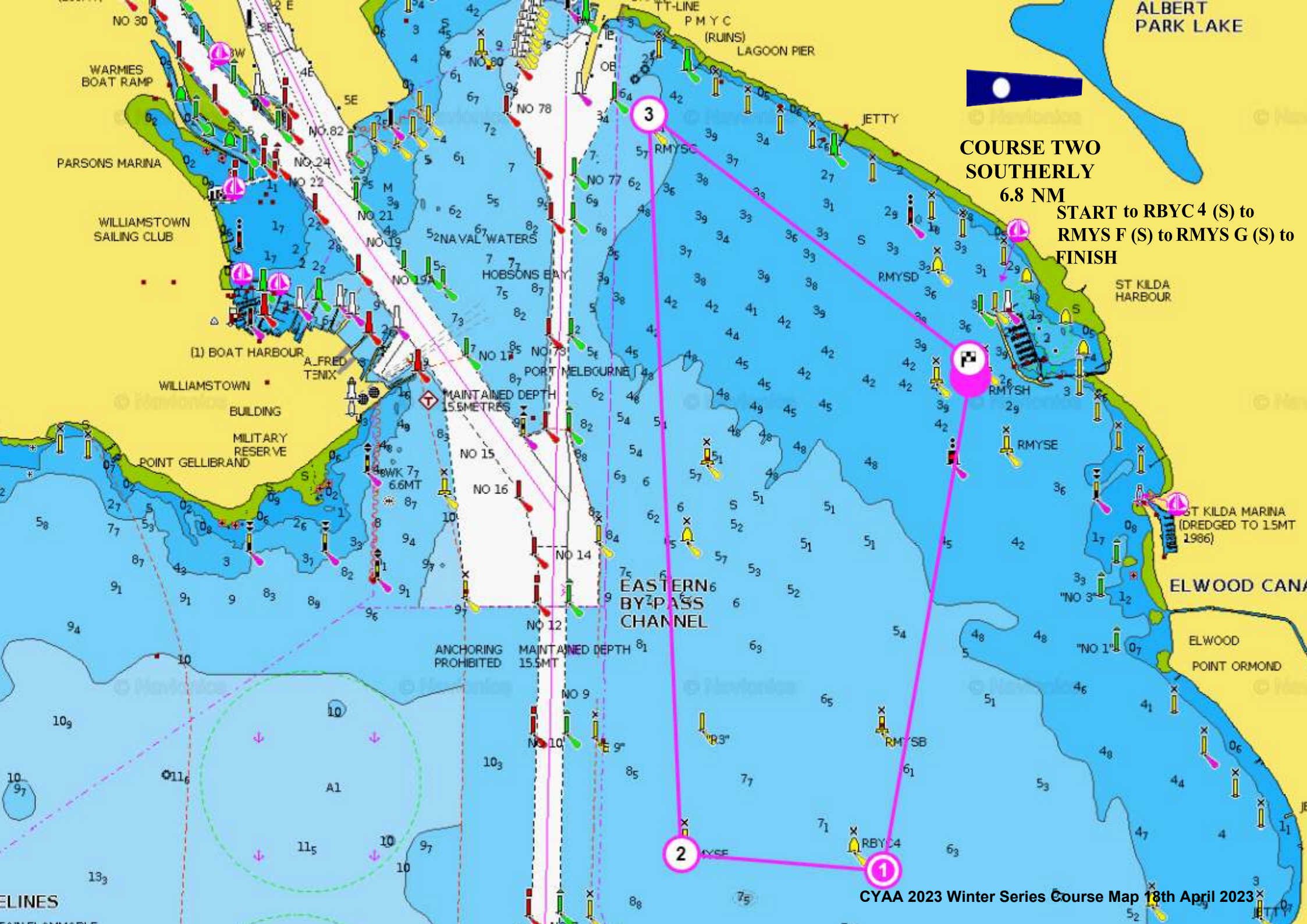
**COURSE ONE
NORTHERLY
6.8 NM**

**START to RMYS G to RMYS F
to RBYC 4 to FINISH**

1

2

3



**COURSE TWO
SOUTHERLY**

6.8 NM

**START to RBYC 4 (S) to
RMYS F (S) to RMYS G (S) to
FINISH**

3

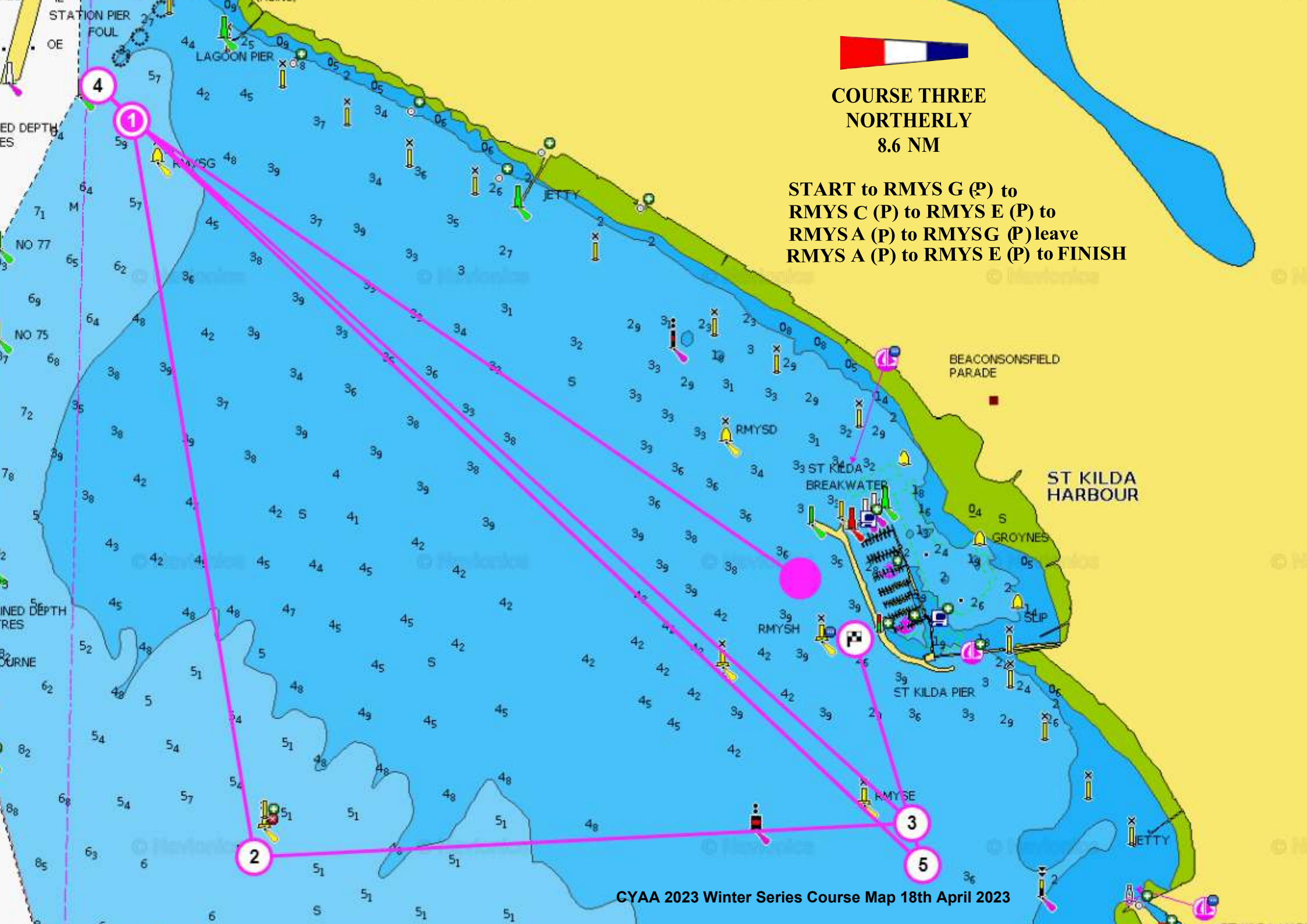
2

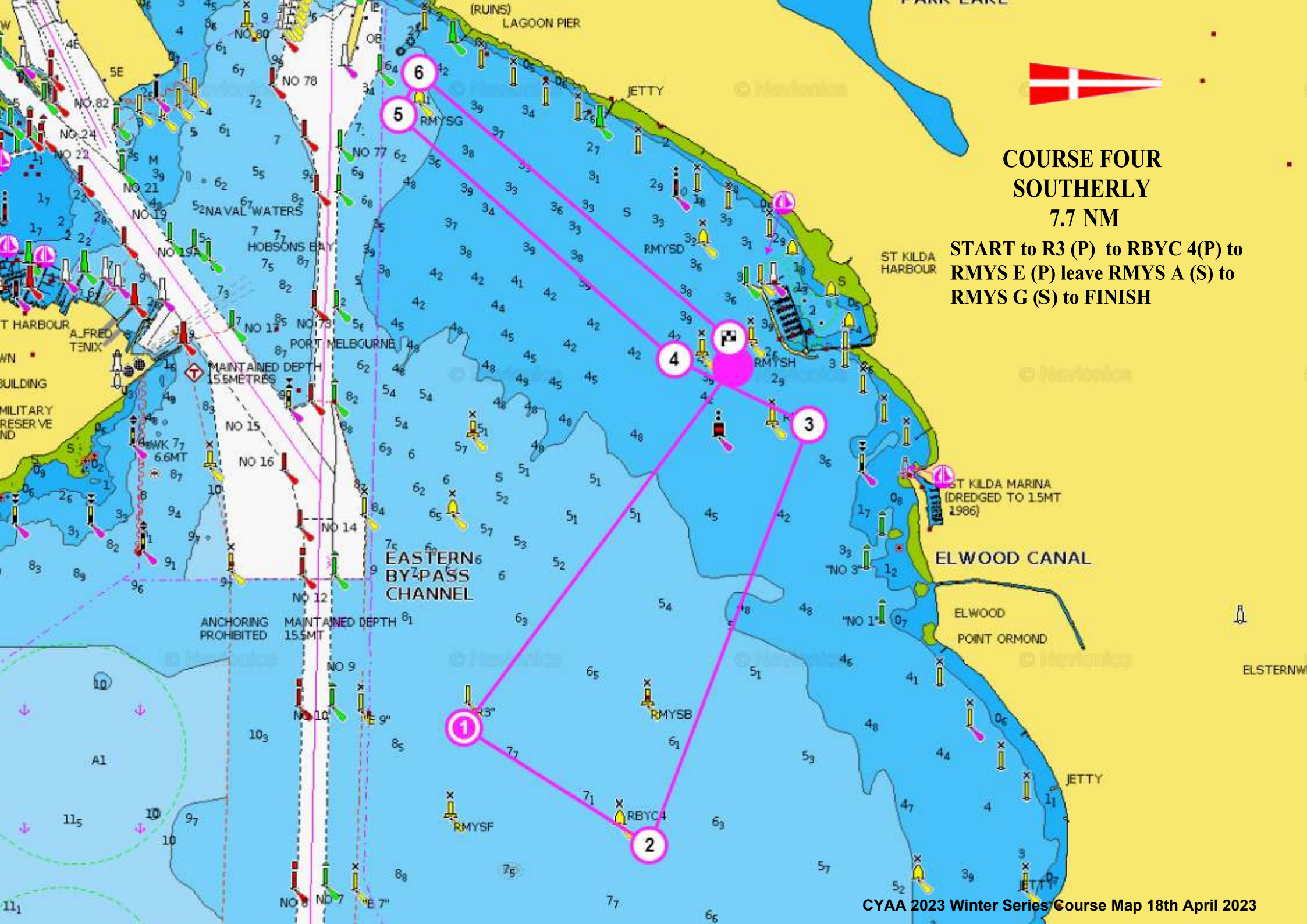
1



**COURSE THREE
NORTHERLY
8.6 NM**

**START to RMYS G (P) to
RMYS C (P) to RMYS E (P) to
RMYS A (P) to RMYS G (P) leave
RMYS A (P) to RMYS E (P) to FINISH**





**COURSE FOUR
SOUTHERLY
7.7 NM**

**START to R3 (P) to RBYC 4(P) to
RMYS E (P) leave RMYS A (S) to
RMYS G (S) to FINISH**

1

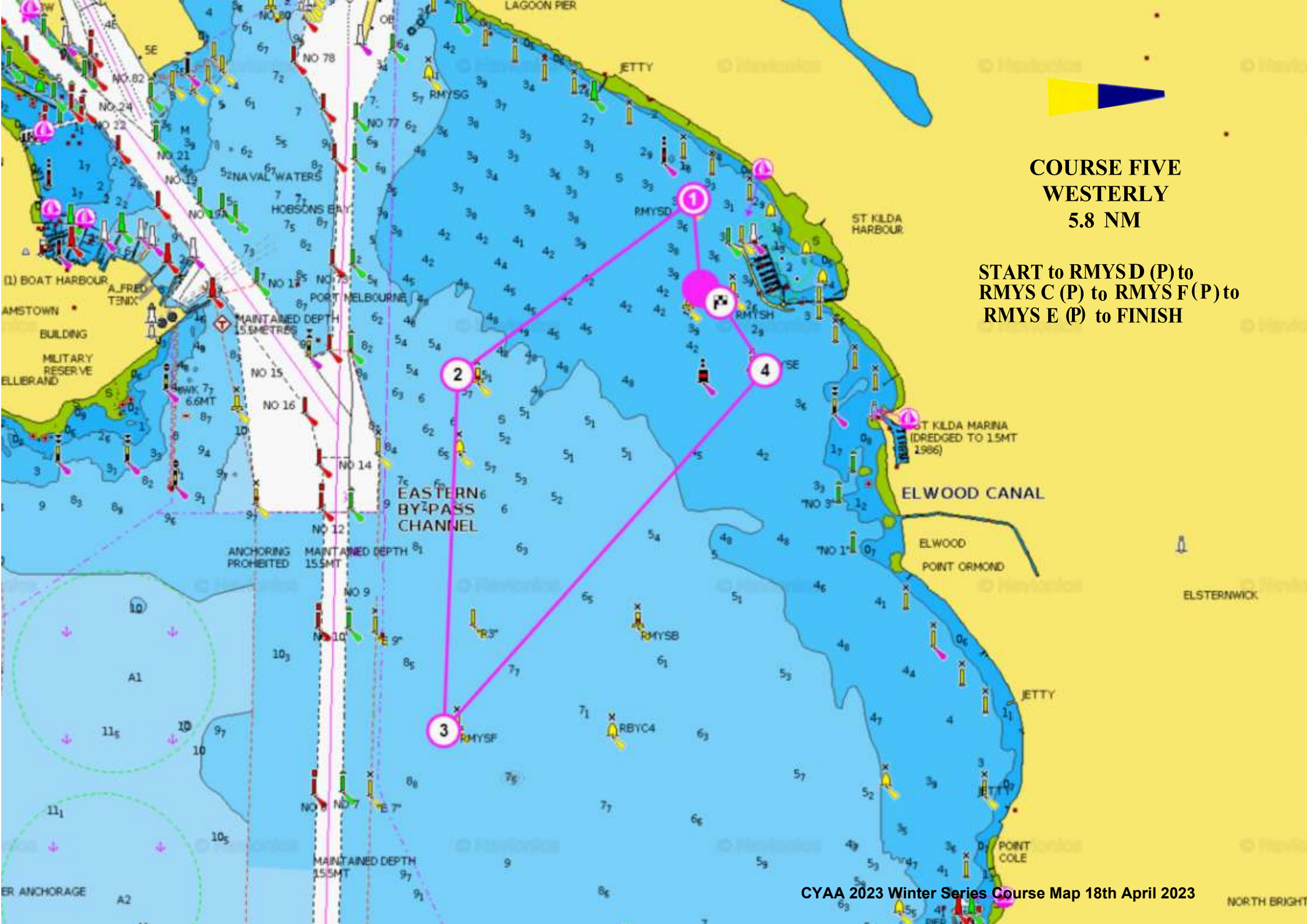
2

3

4

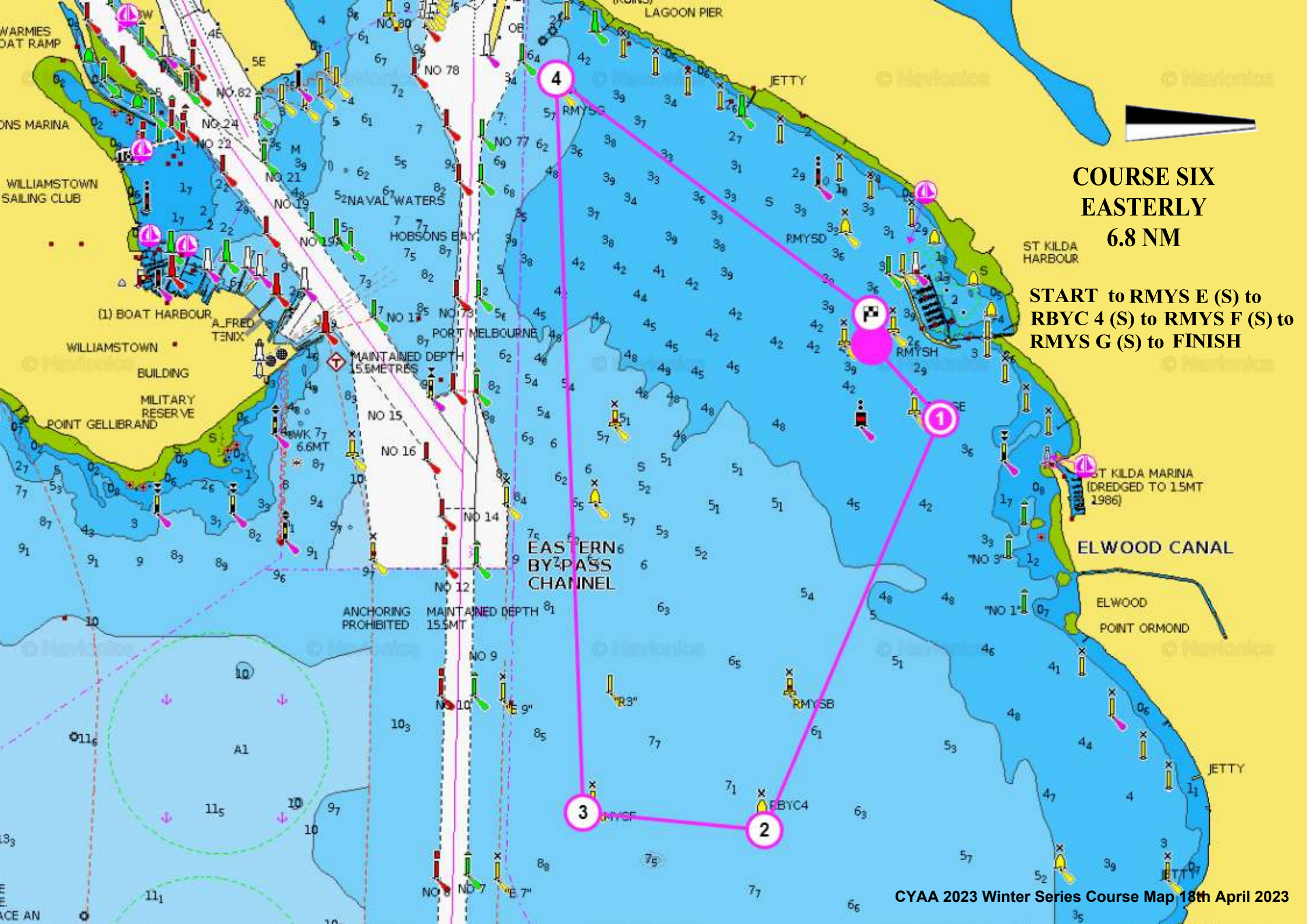
5

6



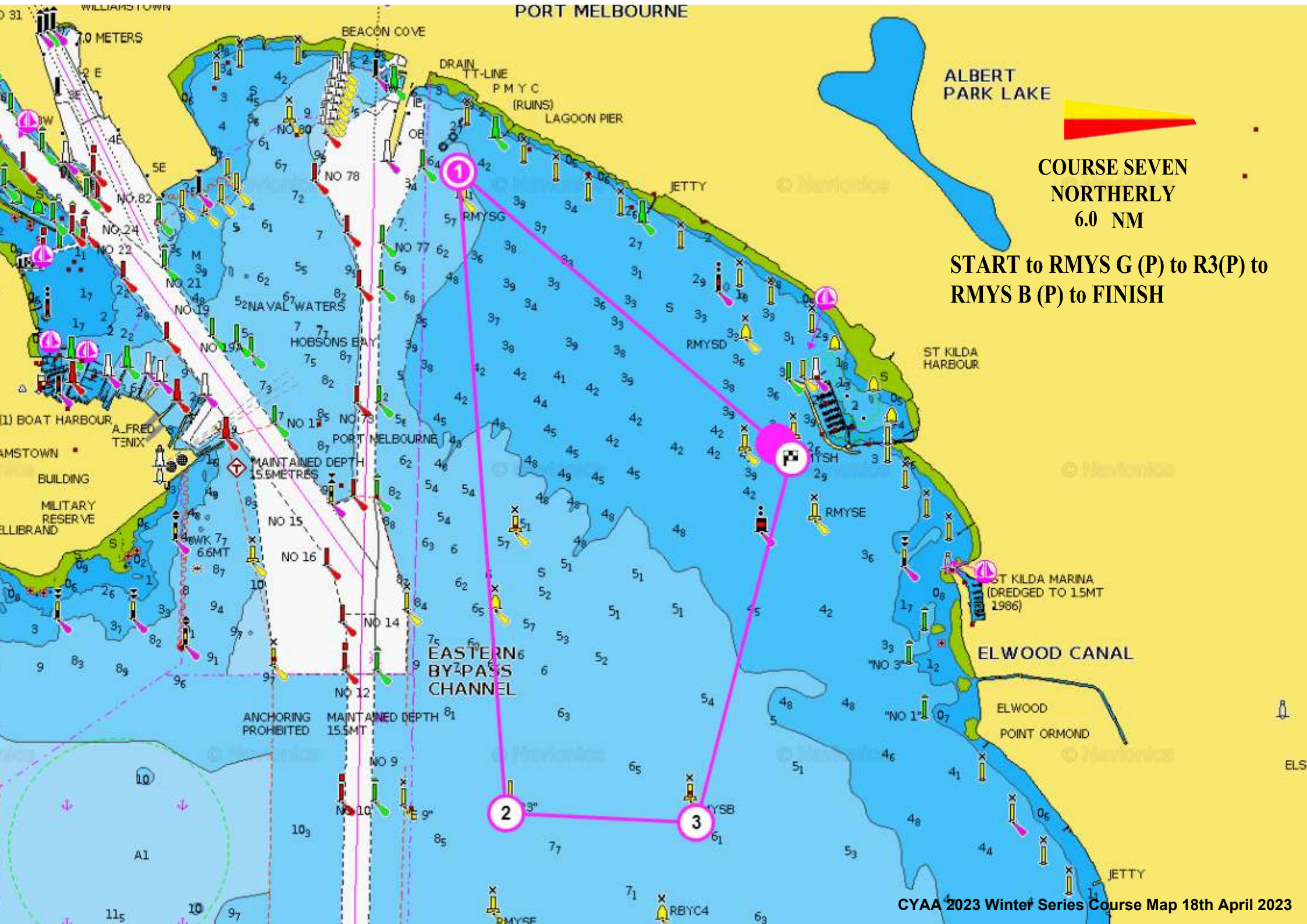
**COURSE FIVE
WESTERLY
5.8 NM**

**START to RMYS D (P) to
RMYS C (P) to RMYS F (P) to
RMYS E (P) to FINISH**



**COURSE SIX
EASTERLY
6.8 NM**

**START to RMYSE (S) to
RBYC4 (S) to RMYSF (S) to
RMYSG (S) to FINISH**

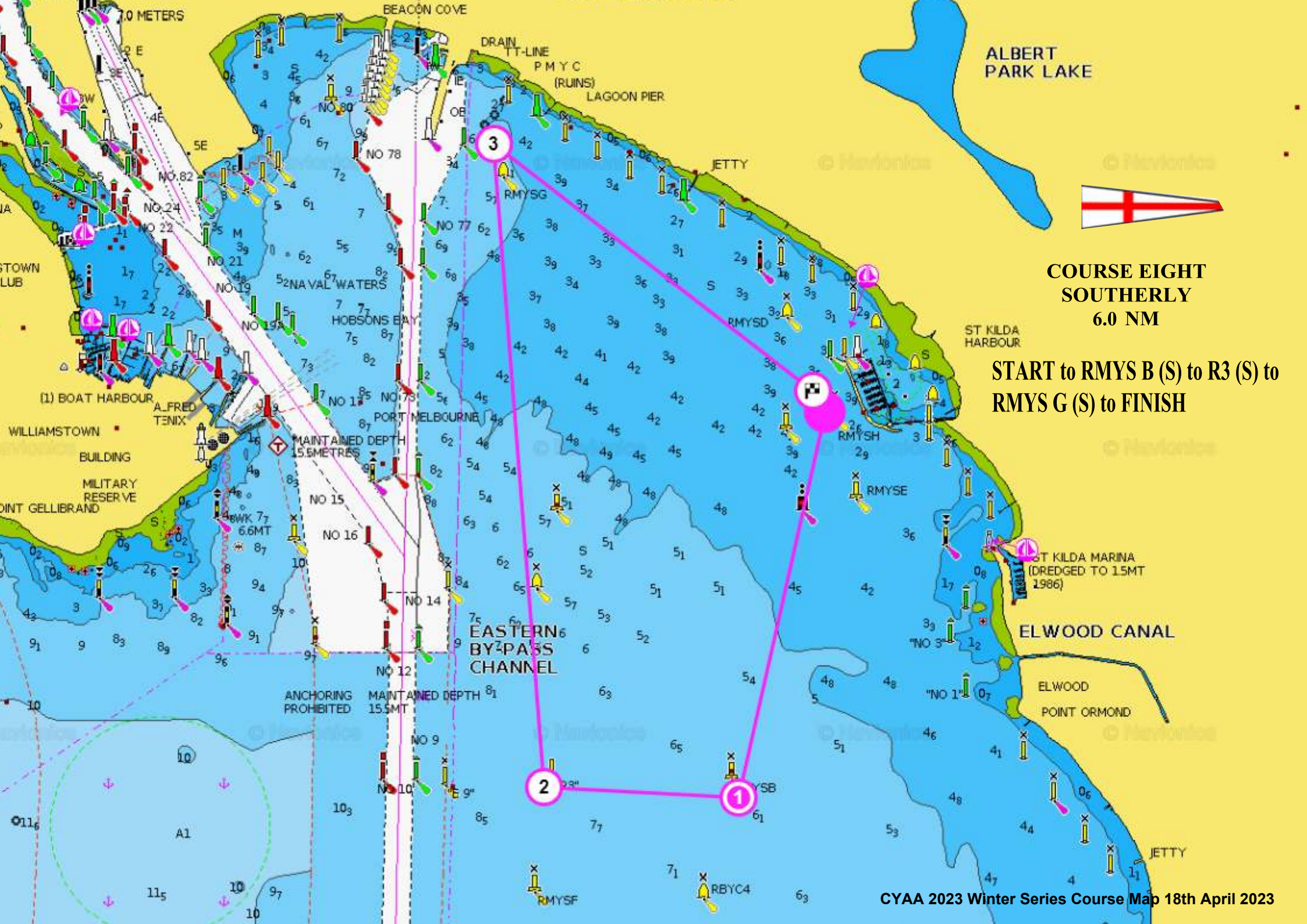


ALBERT
PARK LAKE



**COURSE SEVEN
NORTHERLY
6.0 NM**

**START to RMYS G (P) to R3(P) to
RMYS B (P) to FINISH**

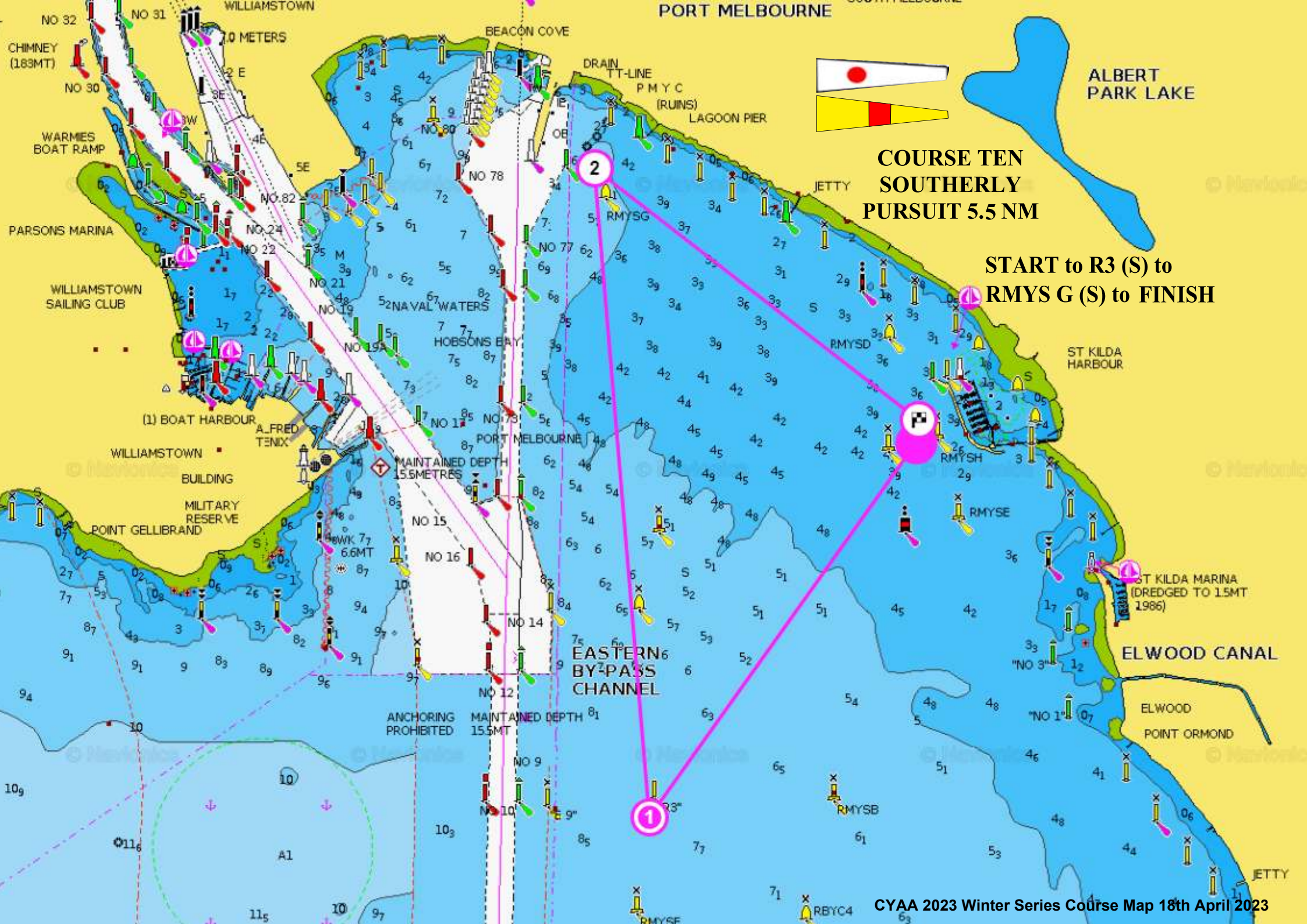


ALBERT PARK LAKE



**COURSE EIGHT
SOUTHERLY
6.0 NM**

**START to RMYS B (S) to R3 (S) to
RMYS G (S) to FINISH**



**COURSE TEN
SOUTHERLY
PURSUIT 5.5 NM**

**START to R3 (S) to
RMYS G (S) to FINISH**

2

START

1