



CYAA 2023 /2024
Summer Series @
RMYS
[Top Yacht Boat sign on](#)
with PoB info for each
race

SAILING INSTRUCTIONS
CLASSIC YACHT ASSOCIATION of AUSTRALIA
2023/2024
SAYONARA SUMMER SERIES
8th October- 2023 17th March 2024

2023/2024 Summer Series
[Entries and Results](#)

Organised and conducted by the ROYAL MELBOURNE YACHT SQUADRON
on behalf of the Classic Yacht Association of Australia Inc. A0034323W



1 RULES.

The RMYS 2023/2024 Sayonara Summer Series of CYAA races will be governed by:

- 1.1 The Australian Sailing Racing Rules of Sailing (RRS 2021-2024).
- 1.2 The Special Regulations and Prescriptions of Australia Sailing Part 1 For Racing Boats apply.
- 1.3 The [requirements of the Port of Melbourne Corporation \(PoMC\)](#).
- 1.4 The Marine Safety Act 2010 (Vic) and the Marine Safety Regulations 2012 (Vic).
- 1.5 Any Skipper subject of a complaint by a Ship's Master for any reason whatsoever may be disqualified.
- 1.6 AS Safety Category 6 shall apply. AS Safety Category 7 yachts may be accepted with the express permission of the Organizing Authority.
- 1.7 Boats shall lodge an appropriate Safety Compliance Declaration with their home club for years 2023/2024.
- 1.8 Crews on yachts without lifelines must wear PFD1 – Failure to do so will result in boats being scored DSQ
- 1.9 [DP] Boat sign on and crew on board declarations **MANDATORY** for all participating boats on each of the CYAA Winter Series of races to register their Crew on board and their contact emergency contacts declarations via the TopYacht Entry System 15 minutes prior to race warning signal via the following link -
<http://tymob.net.au/1714>
- 1.10 RRS Rule 44.1 is changed. The two turns penalty is replaced by the one turn penalty

2 NOTICES TO COMPETITOR.

- 2.1 Notices to competitors have been posted on the [RMYS Website](#).

3. CHANGES TO SAILING INSTRUCTIONS

- 3.1 Any change to the Sailing Instructions will be posted before 09:00 on the day it will take effect, except that any change to the schedule of races will be posted by 20:00 on the day before it will take effect.
- 3.2 Changes to these Sailing Instructions will be available at [RMYS website](#).

4 CODE OF CONDUCT

- 4.1 [DP] Competitors and support persons shall comply with reasonable requests from race officials.

5 SIGNALS MADE ASHORE

- 5.1 Signals made ashore will be made on the RMYS Starting tower.

6. RACING AREA

- 6.1 Racing area will be in the northern waters of Port Phillip.

7 CLASS FLAG

7.1 The Class flag is the CYAA Burgee plus the division flag. Div 1 Blue, Div 2 Green, Div 3 Yellow.

8. SIGNING ON

8.1 [DP] All boats shall report their intention to start the race via the following link

<http://tymob.net.au/1714>

8.2 Boats not indicating their intention to start by 1015 hrs. will be deemed not starting.

8.3 A boat that retires from this race shall notify the RMYS race committee at the first reasonable opportunity by VHF Channel 72.

9 THE START.

9.1 [RMYS Tower Starting procedure for combined divisions using lights](#) in lieu of flags maybe used for this race.

9.2 The race will be started using RRS 26 with the scheduled division three warning signal.

9.3 Subsequent division warning signals will be the start signal of the prior division.

9.4 The RMYS Tower Start line is a line between the vertical line on the centre of the western face (breakwater) race tower and RMYS mark A.

9.5 The RMYS Race committee boat start line is between the displayed orange flag and a orange mark.

9.6 The RMYS Race committee may use a countdown sequence for the start on Channel 72.

9.7 A boat starting later than 10 minutes after her starting signal will be scored Did Not Start without a hearing. This changes rule Appendix A5.

10 THE COURSES.

10.1 CYAA Courses for the 2023/2024 Summer Series of races. Descriptions of the [CYAA 2023_2024 course descriptions 12 Sept 2023](#). A copy of these RMYS courses is included on page 5 of these sailing instructions.

10.2 The selected course for this race shall be announced 15 minutes before the scheduled start time on channel 72 and displayed by international flags and numerals on the RMYS Race Tower.

11 MARKS

11.1 [Location of RMYS marks](#) can be downloaded from this link. Details are also included in the RMYS Sailing Instructions available from [Race Documents - RMYS](#).

11.2 RMYS Mark H is not part of the starting or finishing procedure for any CYAA allocated course.

12 OBSTRUCTIONS

12.1 St. Kilda Breakwater and RMYS Mark H.

13 SHORTENING or ABANDONING RACE AFTER START

13.1 The RMYS race committee may shorten or abandon this race in accordance with RRS.

13.2 When code flag S is displayed on a RMYS Race tower or committee vessel signal mast, The finish is between the adjacent on water mark and the RMYS Race tower or committee vessel. The finish line shall be passed through in the same direction as leaving the previous rounding mark of the allocated course.

14 THE FINISH.

14.1 The RMYS Tower finishing line for this race will be a line between the vertical line on centre of the western face of the RMYS race tower and mark A.

14.2 The RMYS Race committee boat finish line is between the displayed blue flag and the adjacent on water orange mark.

14.3 [DP] A boat no longer racing shall promptly clear the finish area and not interfere with another boat that is racing

15 PENALTY SYSTEM

15.1 For Classic Yachts RRS 44.1 is changed so that the Two-Turns Penalty is replaced by the One-Turn Penalty.

16 TIME LIMIT

- 16.1 The time limit for this race (race one) shall be 180 minutes after the actual start. Boats crossing the finish line after this time has expired will be scored DNF.
- 16.2 At the expiry of the time limit, the RMYS Race Officer may advise on channel 72 that the time limit for the race has expired.

17 PROTESTS AND REQUESTS FOR REDRESS

- 17.1 Protests or Requests for redress shall be notified to a RMYS Race Official within two hours of the protesting yacht's finishing time and lodged in writing on the prescribed form by 11:00 am on the following Monday.
- 17.2 Protests and request for redress will be heard at RMYS, Pier Road, St Kilda 3182 at a time set by RMYS.
- 17.3 The protest committee will consist of two members of the organising club and one member the Classic Yacht Association of Australia.

18. SCORING.

- 18.1 The scoring system is the Low Point System with modifications in accordance with the Notice of Race.
- 18.2 Series Aggregate Points will be allocated for the best corrected time performance based on each series entry starter's actual on course elapsed time after passing through the allocated course finish line for each race of this series.

19. SAFETY.

- 19.1 The race will start and continue at the Race Directors discretion. Upper wind limit for classic yacht racing is a sustained wind strength of 25 knots.
- 19.2 A boat that retires from the race is requested to notify the RMYS race committee as soon as possible on VHF Channel 72

20 OFFICIAL BOATS

- 20.1 Official RMYS Race Committee vessels will display the RMYS burgee.

21. RADIO COMMUNICATION.

- 21.1 The RMYS Race Committee will monitor VHF radio channel 72.
- 21.2 Skippers are required to maintain a dual listening watch on VHF Channels 72, 12 and 16 before, during and after racing.
- 21.3 Except in an emergency a boat shall neither make radio transmissions while racing nor receive radio communications not available to all boats. This restriction also applies to mobile telephones.
- 21.4 [DP] All boats, without exception, shall carry a VHF radio capable of receiving and transmitting on Channels 12, 16 and 72. .
- 21.5 If calls to the race committee on channel 72 receive no response VHF Channel 16 is to be used to establish communication and for switching over to an agreed working channel.

22. RISK STATEMENT

22.1 RRS 3 states: 'The responsibility for a boat's decision to participate in a race or to continue to race is hers alone.' By participating in this event each competitor agrees and acknowledges that sailing is a potentially dangerous activity with inherent risks. These risks include strong winds and rough seas, sudden changes in weather, failure of equipment, boat handling errors, poor seamanship by other boats, loss of balance on an unstable platform and fatigue resulting in increased risk of injury. Inherent in the sport of sailing is the risk of permanent, catastrophic injury or death by drowning, trauma, hypothermia or other causes.

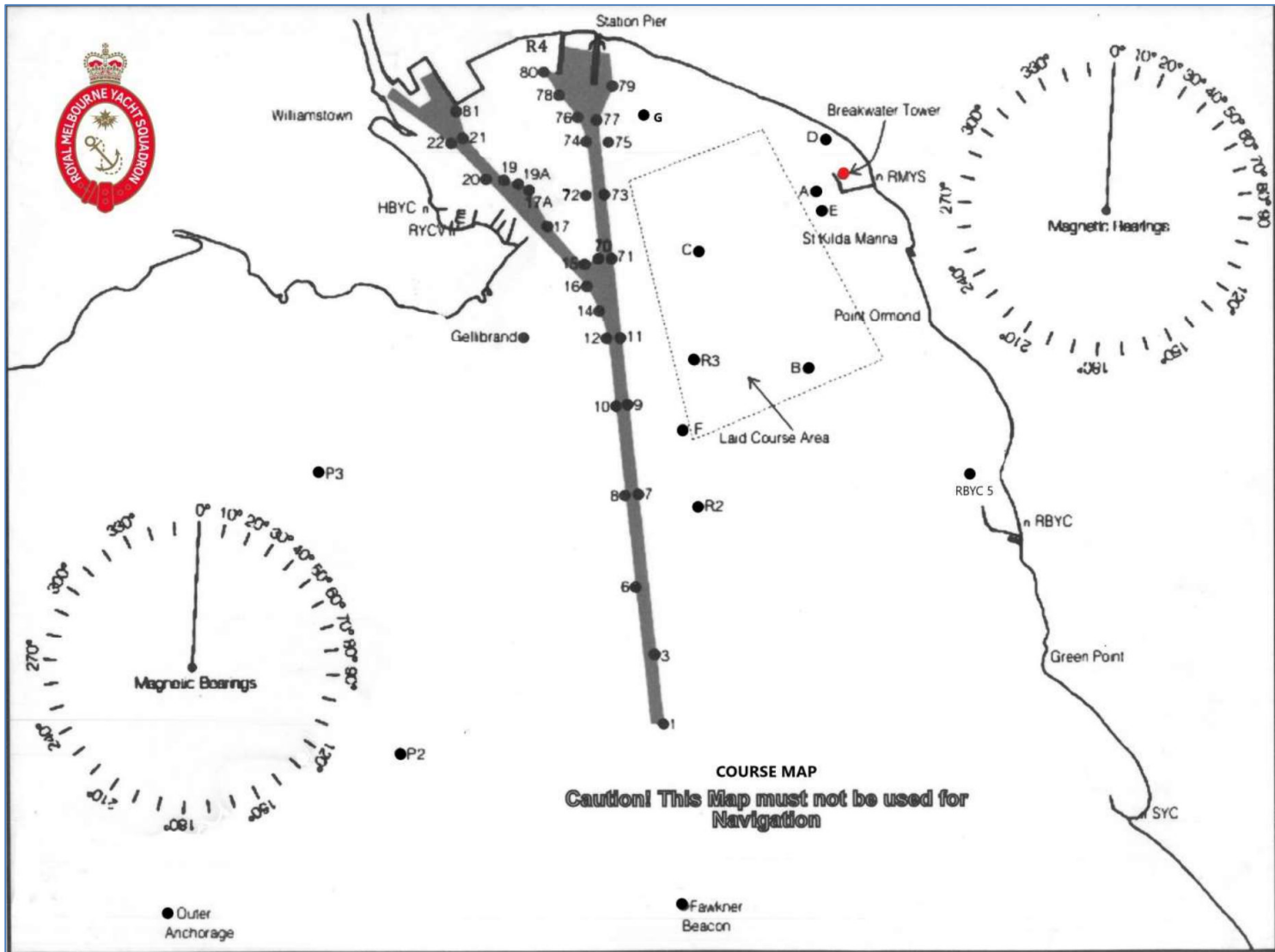
23. INSURANCE

- 23.1 Each participating boat shall be insured with valid third party liability insurance with a minimum cover of \$10,000,000 per incident or the equivalent.

24. FURTHER INFORMATION

RMYS Race Officer peter.costoloe@gmail.com

LOCATION OF RMYS MARKD





RMYS Courses for Classic Yachts

Classic Yacht Association
OF AUSTRALIA

COURSE DESCRIPTIONS

RMYS Tower start

On Water Start

All Divisions

Click [HERE](#) for course maps

All Divisions

COURSE ONE
NORTHERLY
6.8 NM
START to RMYS G (P) to RMYS F (P)
to RBYC 4 (P) to RMYS E (P) to FINISH

COURSE TWO
SOUTHERLY
6.8 NM
START to RBYC 4 (S) to
RMYS F (S) to RMYS G (S) to
FINISH

COURSE THREE
NORTHERLY
8.6 NM
START to RMYS G (P) to
RMYS C (P) to RMYS E (P) to
RMYS A (P) to RMYSG (P) leave
RMYS A (P) to RMYS E (P) to FINISH

COURSE FOUR
SOUTHERLY
7.7 NM
START to R3 (P) to RBYC 4(P) to
RMYS E (P) leave RMYS A (S) to
RMYS G (S) to FINISH

COURSE FIVE
WESTERLY
5.8 NM
START to RMYSD (P) to
RMYS C (P) to RMYS F (P) to
RMYS E (P) to FINISH

COURSE SIX
EASTERLY
6.8 NM
START to RMYS E (S) to
RBYC 4 (S) to RMYS F (S) to
RMYS G (S) to FINISH

COURSE SEVEN
NORTHERLY
6.0 NM
START to RMYS G (P) to R3(P) to
RMYS B (P) to FINISH

COURSE EIGHT
SOUTHERLY
6.0 NM
START to RMYS B (S) to R3 (S) to
RMYS G (S) to FINISH

COURSE NINE
NORTHERLY
PURSUIT 5.1 NM
START to RMYS G (P) to
RMYS C (P) to RMYS B (P)
to FINISH

COURSE TEN
SOUTHERLY
PURSUIT 5.5 NM
START to R3 (S) to
RMYS G (S) to FINISH

COURSE ONE
NORTHERLY
6.8 NM
START to RMYS G (P) to RMYS F (P)
to RBYC 4 (P) to RMYS E (P) to FINISH

COURSE TWO
SOUTHERLY
6.8 NM
START leave RMYS A (P) to
RBYC 4 (S) to RMYS F (S) to
RMYS G (S) to FINISH

COURSE THREE
NORTHERLY
8.6 NM
START to RMYS G (P) to
RMYS C (P) to RMYS E (P) to
RMYS A (P) to RMYSG (P) leave
RMYS A (P) to RMYS E (P) to FINISH

COURSE FOUR
SOUTHERLY
7.7 NM
START to R3 (P) to RBYC 4(P) to
RMYS E (P) leave RMYS A (S) to
RMYS G (S) to FINISH

COURSE FIVE
WESTERLY
5.8 NM
START to RMYS C (P) to RMYS F (P)
to RBYC 5 (P) to RMYS E (P) to
leave RMYS A (S) to FINISH

COURSE SIX
EASTERLY
6.8 NM
START leave RMYS A (P) to
RMYS E (S) to RBYC 4 (S) to
RMYS F (S) RMYS G (S) to
FINISH

COURSE SEVEN
NORTHERLY
6.0 NM
START to RMYS G (P) to R3(P) to
RMYS B (P) to FINISH

COURSE EIGHT
SOUTHERLY
6.0 NM
START to RMYS B (S) to R3 (S) to
RMYS G (S) to FINISH

COURSE NINE
NORTHERLY
PURSUIT 5.1 NM
START to RMYS G (P) to RMYS
C (P) to RMYS B (P) to FINISH

COURSE TEN
SOUTHERLY
PURSUIT 5.5 NM
START to R3 (S) to RMYS G (S) to
FINISH



CYAA 2023 /2024
Summer Series @
RMYS
[Top Yacht Boat sign on](#)
with PoB info for each
race



2023/2024 Summer Series
[Entries and Results](#)