



92nd Stonehaven Cup

3rd – 8th January 2022

The Organising Authority for the event is the
Royal Melbourne Yacht Squadron

SUPPLEMENTARY SAILING INSTRUCTIONS

The notation '[DP]' in a rule in the SI means that the penalty for a breach of that rule may, at the discretion of the protest committee, be less than disqualification.

1 Rules

- 1.1 The Prescriptions and Special Regulations of Australian Sailing (AS) shall apply including Part 2 (Off The Beach Boats).
- 1.2 Equipment requirements and restrictions as documented separately in "Equipment Requirements and Restrictions Applying to Stonehaven Cup Regatta" will apply.
- 1.3 RRS 44.1 is changed so that the Two-Turns Penalty is replaced by the One-Turn Penalty.
- 1.4 In the event of a conflict between the Notice of Race and the Sailing Instructions, the Sailing Instructions will prevail (this changes RRS 63.7).

2 Official Notice Board

- 2.1 The official notice board will be on the wall in the RMYS Wet Bar

3 Signals Made Ashore

- 3.1 Signals made ashore will be displayed on the flagpole located on the roof top of the RMYS club house
- 3.2 When flag "AP" is displayed ashore, '1 minute' is replaced with 'not less than 30 minutes' in the race signal AP.

4 Schedule

4.1 Racing schedule

| Event | Date | Time/s |
|---|----------------|---|
| Early equipment inspection | Sun 02/01/2022 | 1200 to 1600 hrs |
| Regatta check-in Equipment inspection Volunteers Briefing Competitors briefing 2 invitation races - Youth Welcome BBQ - Yard | Mon 03/01/2022 | 0800 to 1200 hrs 0800 to 1200 hrs 0800 hrs 1100 hrs 1 st warning signal 1255 hrs 1800 hrs |
| Racing – Youth | Tue 04/01/2022 | 1 st warning signal 0955 hrs |
| Racing – Youth | Wed 05/01/2022 | 1 st warning signal 0955 hrs 1800 hrs |
| Racing – Youth | Thu 06/01/2022 | 1 st warning signal 0955 hrs |
| Reserve day, or racing if so decided | Fri 07/01/2022 | 1 st warning signal 0955 hrs |
| Racing – Youth Formal Presentation Dinner | Sat 08/01/2022 | 1 st warning signal 0955 hrs 1830 hrs |
| Final day for boat / container pickup for interstate competitors | Sun 9/01/2022 | All boats and stored items to be clear of the club by 1600hrs |

4.2 Ten races are scheduled for Stonehaven Cup, plus two invitation races.

4.3 No more than four races will be run on any one day.

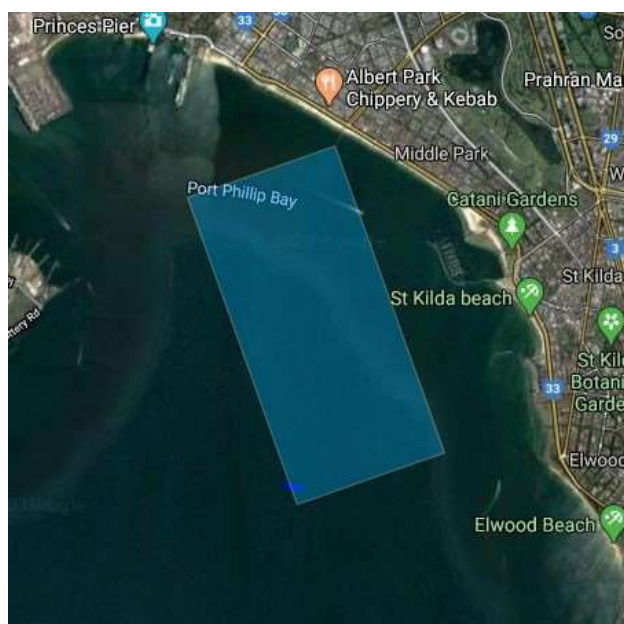
4.4 Races may be brought forward in the series provided that the sailing program becomes no more than one race ahead of the schedule.

5 Class Flags, Courses and Marks

5.1 See Appendix A.

6 Racing Area

6.1 Racing will be conducted on the waters of the breakwater of the RMYS marina



7 Wind Speed Limit

- 7.1 The race committee may postpone or abandon racing if the measured wind speed on the course exceeds 22 knots for five minutes or more.
- 7.2 The race committee may mandate the reefing of the mainsails by all participants. If during the starting sequence for a race, the race committee displays the letter "R" on a board on the transom of the race committee vessel, all boats are to reef their mainsails for the duration of that race.

8 The Start

- 8.1 A boat starting later than 5 minutes after her starting signal will be scored Did Not Start without a hearing. This changes RRS A4 and A5.
- 8.2 Boats whose warning signal has not been made shall avoid the starting area during the starting sequence for other races. [DP]

9 Time Limits and Target Times

- 9.1 The target time for each race is 45 minutes. Failure to meet the target time will not be grounds for redress. This changes RRS 62.1 (a).
- 9.2 Race time limit: 55 minutes
- 9.3 Boats failing to finish 15 minutes after the first boat sails the course and finishes within the race time limit, maybe scored an Allocated Place. The race committee may allocate places based on a boat's position on the course when this 15-minute time limit expires. The decision of the race committee is final. This changes RRS 35 and A4.

10 Protests and Requests for Redress

- 10.1 [Appendix I](#) (Arbitration) will apply.
- 10.2 A team manager is permitted to attend mediation to support a young competitor.
- 10.3 Any assistance and advocacy regarding protests, or requests for redress, is to be provided by the team manager only.

11 Scoring

- 11.1 3 races are required to be completed to constitute a series.
- 11.2 When fewer than 5 races have been completed, a boat's series score will be the total of her race scores.
- 11.3 When from 5 to 8 races have been completed, a boat's series score will be the total of her race scores excluding her worst score.
- 11.4 When from 9 to 10 races have been completed, a boat's series score will be the total of her race scores excluding her two worst scores.
- 11.5 The scores of the 3 best-placed boats in each team of the Club Teams Competition will be totaled for each race, including the invitation races, and the team with the lowest total points in all races will be awarded the Otto A. Meik Perpetual Teams Trophy.

12 Safety Regulations [DP]

- 12.1 Sign On: All boats must "sign on" before the beginning of the starting sequence before each race at the Committee Vessel on the station.
- 12.2 Signing On is done so by approaching the Committee Vessel on Starboard tack and hailing their sail number and the words, "signing on" and waiting for acknowledgment from the race committee vessel.
- 12.3 Each boat will be signed off by the race committee when finishing a race and signed off the water by beach management personnel when they come ashore. Any boat retiring will be reported by safety boats to the race committee and signed ashore by beach management personnel.
- 12.4 Failure to Sign-On in accordance with SI 16 may result in that boat being scored a 1 point penalty in the first race on the day of the omission without a hearing. This changes RRS A4 and A5.

13 Replacement of Crew or Equipment

- 13.1 Substitution of competitors will not be allowed without the approval of the race committee.
- 13.2 Substitution of damaged or lost equipment will not be allowed unless authorised by the race committee.
- 13.3 Requests for substitution will be made to the race committee at the first reasonable opportunity.

14 Equipment and Measurement Checks

- 14.1 A boat or equipment may be inspected at any time for compliance with the class rules and sailing instructions. On the water, a boat may be instructed by the race committee or measurer to proceed immediately to a designated area for inspection.

15 Event Advertising [DP]

- 15.1 Boats will display advertising if supplied by the organising authority, and locate it as designated at registration.

16 Support Boats [DP]

- 16.1 All boats not racing shall:
 - 16.1.1 remain outside the racing area.
 - 16.1.2 remain at least 100 metres from any competing boat.
 - 16.1.3 remain at least 100 metres from any mark of the course.
 - 16.1.4 remain at least 100 metres from any lay-line.
 - 16.1.5 motor not sail if the support boat is a keelboat.
- 16.2 All non-competing boats are exempt from the above rules if they are carrying out a rescue of a competing boat and/or towing a retired competing boat to shore as directed by the RC.
- 16.3 All support boats are required to have a VHF radio and maintain a listening watch on VHF72 or any other channel specified by the race committee.
- 16.4 When requested by the Race Management Team, support boats shall render immediate assistance as and when directed.
- 16.5 Support boats shall be identified by conspicuously displaying 2 or 3 letters on a water-resistant sheet attached to the outboard cowling with the initials of the club of the competitors they are supporting. Alternatively, they may display the relevant club's burgee.

17 Rubbish Disposal [DP]

- 17.1 Boats will not put rubbish in the water. Rubbish may be placed aboard support and race committee vessels.

18 Radio Communication [DP]

- 18.1 Except in an emergency, a boat that is racing shall not make voice or data transmissions and shall not receive voice or data communication that is not available to all boats.

19 Prizes

19.1 Youth

| | |
|--|--|
| 1 st , 2 nd , and 3 rd in 1st Invitation Race | Spirit Of Tasmania Invitation Race Trophies |
| 1st place in 2nd Invitation Race | Andrew Linacre Memorial Trophy Andrew Linacre Memorial trophies |
| 2 nd and 3 rd in 2 nd Invitation Race | Trophies |
| 1st place in Stonehaven Cup | Stonehaven Cup |
| 1st, 2nd, and 3rd in Stonehaven Cup | Awards to all crew members |
| 1st, 2nd, and 3rd in each race | Prizes to all crew members |
| Club team with lowest total points in Stonehaven Cup and Invitation Races | Otto A Meik Perpetual Teams Trophy |
| All participants | Stonehaven Cup pennant |

20 Further Information

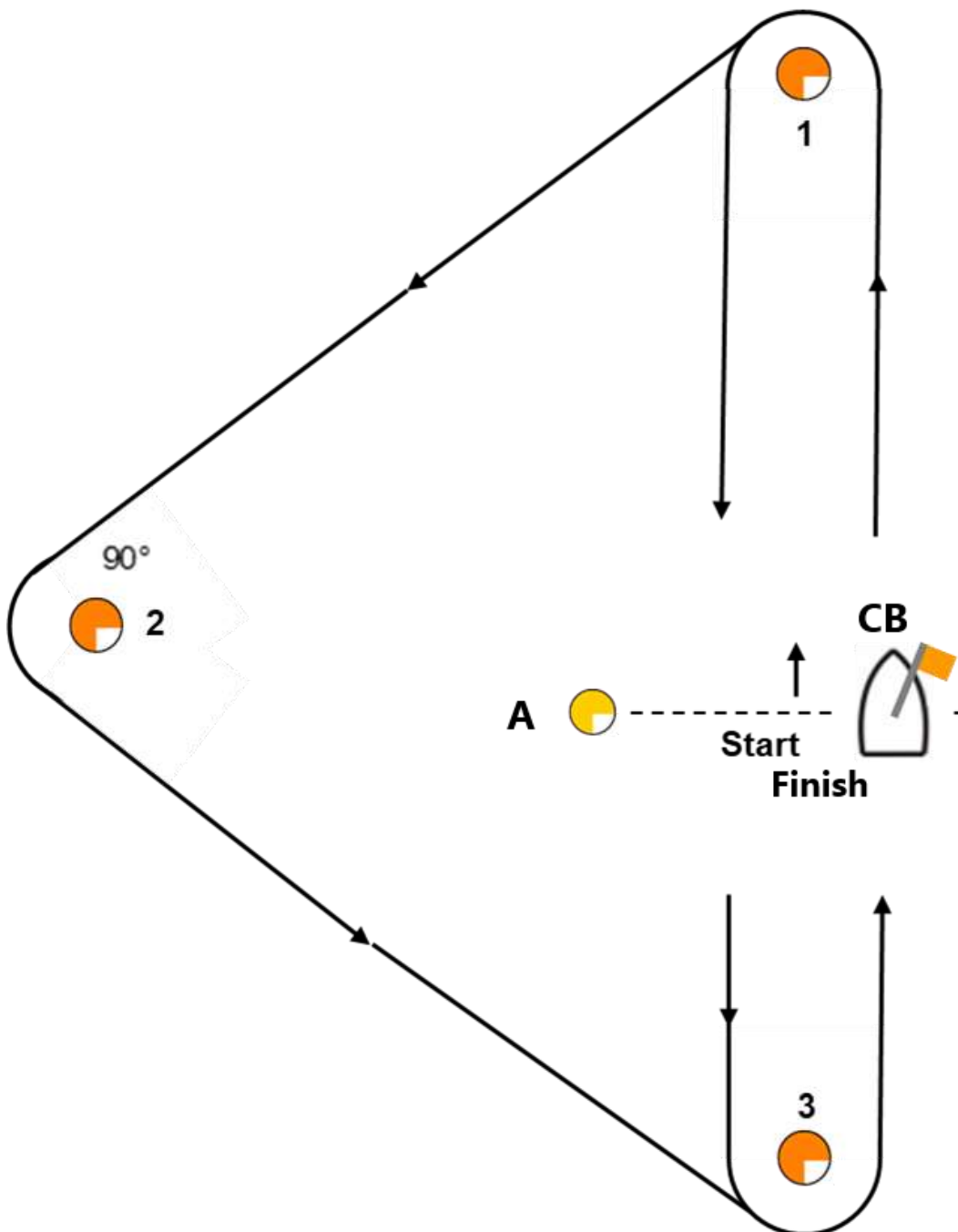
| | |
|---------------------------------------|--|
| Matt Solly | 0408122044 |
| Commodore and Regatta Manager RMYS | manager@rmys.com.au |
| Colin Burgess | 0418240331 |
| Boating Manager | boating@rmys.com.au |

Appendix A – Class Flags, Courses, Marks

Marks 1,2,3 are to be left to port (P).

| Division | Class Flag |
|----------|------------------|
| Youth | Quest Class Flag |

| Course | Course to be sailed |
|-----------------------------------|---------------------------------------|
| 1 | S - 1 - 2 - 3 - F |
| 2 | S - 1 - 2 - 3 - 1 - 3 - F |
| 3 | S - 1 - 2 - 3 - 1 - 3 - 1 - 2 - 3 - F |
| 4 | S - 1 - 3 - F |
| 5 | S - 1 - 3 - 1 - 3 - F |
| 6 | S - 1 - 3 - 1 - 3 - 1 - 3 - F |
| On Legs 1 – 3 pass A(P) or CB(S) | |
| On Legs 3 – 1 pass A(P) and CB(S) | |



| Mark | Description |
|-------------|---|
| A | Yellow conical inflatable |
| 1, 2, 3 | Orange conical inflatable |
| Change mark | Orange conical with black band inflatable |
| CB | Committee Boat – William Paterson |