



National Noelex 25 & 30 Championships

Sat 18 & Sun 19 May 2019

Conducted by ROYAL MELBOURNE YACHT SQUADRON (RMYS)
on behalf of the Noelex Yacht Association of Australia Inc

SAILING INSTRUCTIONS

1. RULES:

The regatta will be governed by the rules as defined in *The Racing Rules of Sailing (RRS), Australian Sailing (AS) Special Regulations (SR) Part 1 for Racing Boats Category 5* PLUS an engine shall be carried at all times in conformity with the requirements of the AS SR Part 1 - 2.01.7 3.24.3 and 3.24.4 Propulsion and, *the Australian Trailable Yacht & Sports Boat Rule, July 2018*.

- Boats are required to display the Australian Sailing Safety Category 5 (or higher category) compliance sticker on the transom. Alternatively, a Cat 5 form shall be submitted at registration.
- Keels shall be locked down at all times while racing.
- Boats shall not race with anchors protruding over any part of the boat gunwale.

2. NOTICES TO COMPETITORS

- 2.1 Notices to competitors will be posted on the official notice board located in the Olympic Bar on level 1 in the RMYS clubrooms.
- 2.2 The Race Office is located on the ground floor in the RMYS clubrooms.

3. CHANGES TO SAILING INSTRUCTIONS

- 3.1 Any change to the sailing instructions will be posted before 0900 on the day it will take effect, except that any change to the schedule of races will be posted by 2000 on the day before it will take effect.

4. SIGNALS MADE ASHORE:

- 4.1 Signals made ashore will be displayed on the flag mast on the RMYS Clubhouse.
- 4.2 When flag AP is displayed ashore, '1 minute' is replaced with 'not less than 45 minutes' in the race signal AP.

5. SCHEDULE OF RACES

Date	First Warning Signal	Last Warning Signal
Saturday 18 th May 2018	1055hrs	1555hrs
Sunday 19 th May 2018	0955hrs	1355hrs

Code Flag L will be displayed at the finish line to signify there will be another race.

6. CLASS FLAGS:

DIV 1	NX 30 Pennant (Blue on White)
DIV 2	NX 25 Pennant (Red on White)

7. THE COURSES:

The courses to be sailed are described in Attachment `C`.

8. MARKS:

8.1 Marks are described in Attachment `C`.

9. THE START

9.1 The starting line will be between a staff displaying an orange flag on the race committee vessel at the starboard end and the course side of the port-end starting mark.

9.2 A boat that does not start within five minutes after her starting signal will be scored Did Not Start without a hearing. This changes RRS A4 and A5.

10. TIME LIMITS

10.1

Race Time Limit (for the first boat)	90 Minutes
Finishing Window	20 Minutes

10.2 Boats failing to finish within the Finishing Window shall be scored Did Not Finish (DNF) without a hearing. This changes RRS 35, A4 and A5.

11. CHANGE OF THE NEXT LEG OF THE COURSE

To change the next leg of the course, the race committee will lay a new mark (or move the finishing line) and remove the original mark as soon as practicable. When in a subsequent change a new mark is replaced, it will be replaced by an original mark.

12. THE FINISH

The finishing line will be between a staff displaying an orange flag on the race committee vessel at the starboard end and the course side of the finishing mark.

13. PROTESTS AND REQUESTS FOR REDRESS

13.1 Protest forms are available at the race office. Protests and requests for redress or reopening shall be delivered there within the appropriate time limit.

13.2 The protest time limit is 90 minutes after the last boat has finished the last race of the day or the race committee signals no more racing today, whichever is later.

13.3 Notices will be posted no later than 30 minutes after the protest time limit to inform competitors of hearings in which they are parties or named as witnesses. Hearings will be held in the Committee Room, located at the RMYS Clubhouse, beginning at the time posted.

- 13.4 Notices of protests by the race committee, technical committee or protest committee will be posted to inform boats under RRS 61.1(b).

14. REPLACEMENT OF EQUIPMENT

- 14.1 Substitution of damaged or lost equipment will not be allowed unless authorised by the race committee. Requests for substitution shall be made to the committee at the first reasonable opportunity. [DP]

15. DISCLAIMER OF LIABILITY

Competitors participate in the regatta entirely at their own risk. See RRS 4, Decision to Race. The organizing authority will not accept any liability for material damage or personal injury or death sustained in conjunction with or prior to, during, or after the regatta.

16. SAFETY REGULATIONS

- 16.1 Check-Out and Check-In: Boats shall check-out by Calling the Race Committee Vessel (Call Sign: *'William Paterson'*) on VHF 72 prior to the Warning Signal. There is no requirement to check in after racing [DP].
- 16.2 A boat that retires from a race shall notify the Race Officer (VHF Channel 72) as soon as possible.

17. RADIO COMMUNICATION

Except in an emergency, a boat shall neither make radio transmissions while racing nor receive radio communications not available to all boats. This restriction also applies to mobile telephones.

18. INSURANCE

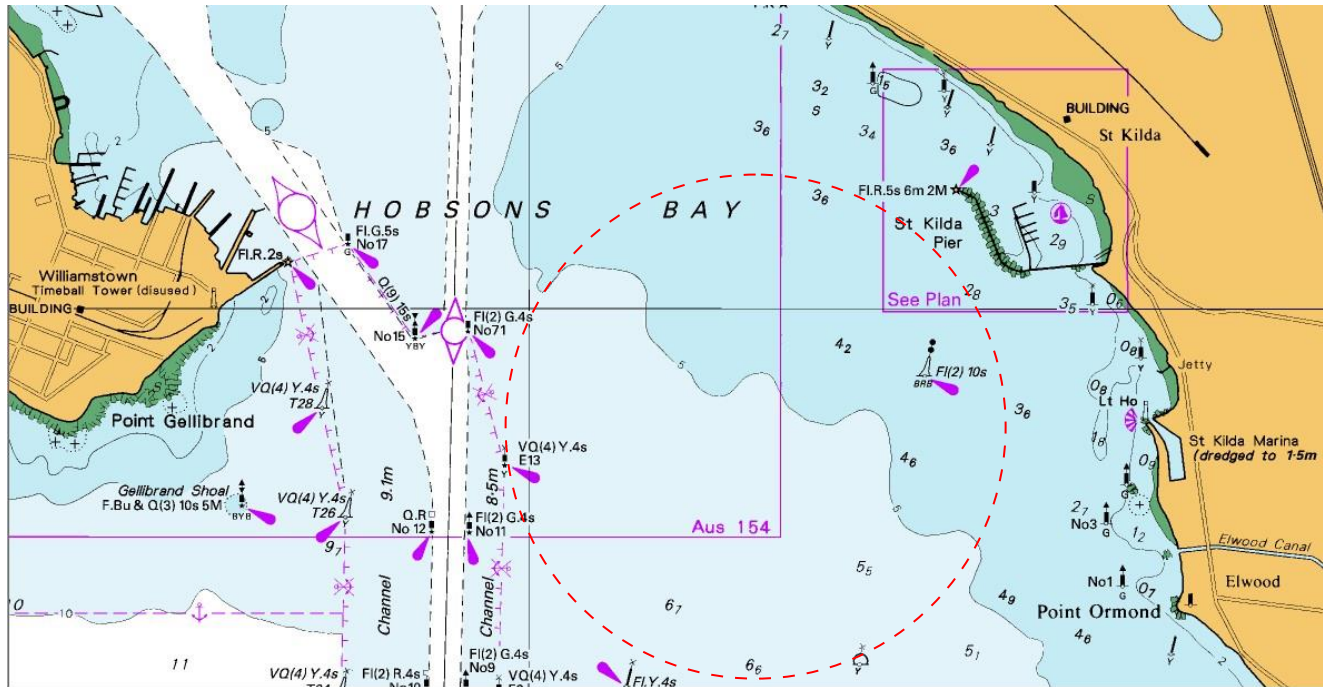
Each participating boat shall be insured with valid third-party liability insurance with a minimum cover of Aus\$10,000,000 per event or the equivalent.

19. PRIZES

Prizes will be given to 1st, 2nd and 3rd place on Class Based Handicap (CBH) for each Division according to the NYAA Inc., policy.

Personal Handicap Prizes (PBH) prizes may be given to 1st, 2nd and 3rd place in each Division according to NYAA Inc., policy.

Attachment A



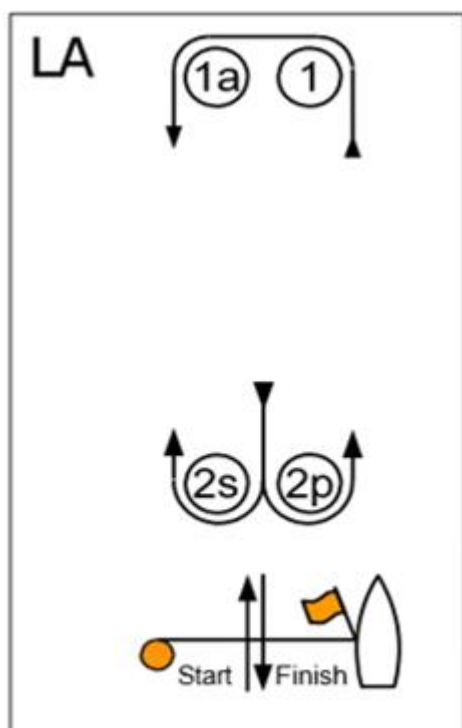
Sailing Area – Port Phillip - Hobsons Bay

Attachment B

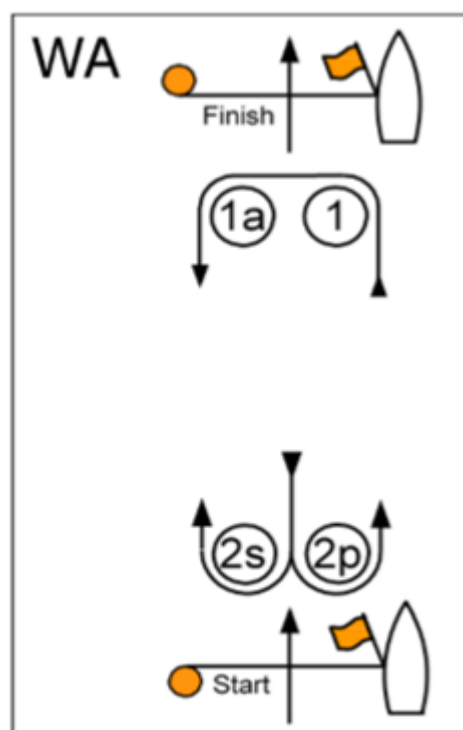


RMYS Marina – Measurement check, as per Notice Of Race, to be undertaken alongside Temporary Mooring Zone

Attachment C: Courses – Signalled by numeral pennants



Courses 1-3 (LA) – Windward/Leeward with Offset Mark, Leeward Finish	
Signal	Rounding Order
Course 1	Start – 1 – 1a – 2s/2p – 1 – 1a – Finish
Course 2	Start – 1 – 1a – 2s/2p – 1 – 1a – 2s/2p – 1 – 1a – Finish
Course 3	Start – 1 – 1a – 2s/2p – 1 – 1a – 2s/2p – 1 – 1a – 2s/2p – 1 – 1a – Finish



Courses 4-6 (WA) – Windward/Leeward with Offset Mark, Windward Finish	
Signal	Rounding Order
Course 1	Start – 1 – 1a – 2s/2p – Finish
Course 2	Start – 1 – 1a – 2s/2p – 1 – 1a – 2s/2p – Finish
Course 3	Start – 1 – 1a – 2s/2p – 1 – 1a – 2s/2p – 1 – 1a – 2s/2p – Finish

Mark Descriptions

Marks 1, 1a, 2S and 2P	Orange cylindrical inflatable marks
Start / Finish	Yellow cylindrical inflatable mark
New Mark	Orange cylindrical inflatable mark with black band