

ROYAL MELBOURNE YACHT SQUADRON



SAILING INSTRUCTIONS

2018-2020

Pier Road, St. Kilda VIC 3182
PO Box 2001, St. Kilda West VIC 3182
Phone: (03) 9534 0227 Fax: (03) 9534 4478
Email: racing@rmys.com.au Web: www.rmys.com.au
ABN 64 006 124 867

Sailing at St Kilda since 1876

Committee Boat (CB): William Paterson

Note that the term 'Committee Boat' is used here rather than 'the race committee vessel' as preferred in the RRS.

Race Committee Vessels: Killara
Albatross
Marshall Hawes
Rohan Brownlee

Note that any race committee vessel may be used as the 'Committee Boat' for starts and/or finishes.

Land Based Call signs: Squadron Tower
Squadron Base

All use the prefix "Squadron".

PREAMBLE

This preamble includes a number of explanatory notes describing the purpose and intent of these Sailing Instructions. Many paraphrase statements made in the Racing Rules of Sailing under 'Basic Principles' and 'Part1: Fundamental Rules' and elsewhere.

Royal Melbourne Yacht Squadron (RMYS) encourages participation in club races and events in a safe manner whilst always showing respect for fellow competitors and the system of rules that makes it all possible.

The *rules* under which we race are a combination of the *Racing Rules of Sailing (RRS)*, the *Notice of Race (NoR)*, and these *Sailing Instructions (SIs)*. Together these define the *rules* competitors are expected to accept, follow and enforce. These *rules* also require that competitors adhere to local legislative requirements.

Terminology, definitions, structure of the document, and document style generally conform to those used in the *RRS* with the exception that we refer to the *Committee Boat* rather than 'the race committee vessel'. Also, abbreviations are generally defined the first time they are used rather than providing a separate glossary.

While the NoR helps potential competitors decide whether they want to compete in the event, these SIs are concerned only with racing and include only two types of statement as required in the RRS:

1. the intentions of the race and protest committees; and
2. the obligations of competitors.

The SIs appear in the numbered sections of this document in the order in which they are likely to be used.

Competitors are reminded that the decision to race or to continue to race is theirs alone.

Please keep this set of sailing instructions for future use as one copy only will be printed for issue to each boat. Extra copies can be obtained from the RMYS office for a fee or downloaded and printed directly from the RMYS website.

TABLE OF CONTENTS

1	Organising Authority	4
2	Rules	4
3	Advertising.....	4
4	Safety Requirements.....	4
5	Eligible Boats and Crew	5
6	Notices to Competitors.....	5
7	Changes to Sailing Instructions.....	5
8	Signals Made Ashore.....	5
9	Signals Made Afloat	5
10	Racing Programme & Entrants List	6
11	Schedule of Races.....	6
12	Class Flags.....	6
13	Division Flags	6
14	Racing Area	7
15	The Courses	7
16	Marks.....	8
17	Areas That Are Obstructions	8
18	The Start.....	8
19	Change of Course after a Boat Start	9
20	Shortening Course	9
21	Retirement	10
22	The Finish.....	10
23	Time Limit	10
24	Protests and Requests for Redress.....	10
25	Scoring	10
26	Races not completed	11
27	Handicaps and Ratings.....	11
28	Radio Communication.....	11
29	Race Results	11
30	Starters and Prizes	11
31	Disclaimer of Liability	11
32	Insurance.....	11
33	Special Instructions for Pursuit Races.....	12
34	Special Instructions for Night Races.....	13
35	Appendices.....	15
	Appendix 1 – The Course Area	15
	Appendix 2 – Marks	16
	Appendix 3 – Laid Courses	18
	Appendix 4 – Squadron Courses	23
	Appendix 5 – Pursuit Courses	24

1 ORGANISING AUTHORITY

The Organising Authority is the Royal Melbourne Yacht Squadron.

2 RULES

All races will be governed by:

- (a) the Racing Rules of Sailing with Australian Sailing (AS) Prescriptions (RRS)
- (b) the Special Regulations of Australian Sailing (SRs)
- (c) the Marine Safety Act 2010 (Vic), the Marine Safety Regulations 2012 (Vic), and the regulations of the Victorian Ports Authority (Melbourne)
- (d) individual class and rating rules as appropriate
- (e) the International Regulations for Preventing Collisions at Sea (COLREGs) which replace the rules in RRS Part 2 between sunset and sunrise
- (f) supplementary documentation issued in accordance with the Notice of Race or Sailing Instructions

If a regatta spans the time of release of a new governing document then the one in force at the time of the first race shall be used for the duration of the regatta.

3 ADVERTISING

The advertising category shall be in accordance with RRS 80 unless stated otherwise in the Notice of Race for a particular event or series.

4 SAFETY REQUIREMENTS

- 4.1 A valid Safety Compliance Declaration (SCD) shall be lodged with the Sailing Coordinator. Visiting boats shall lodge a SCD with their own club. SCDs expire on the 30th of June each year. The SCD certifies each boat meets the required safety category and that it will be maintained in that condition for the SCD period and that any change to the level of compliance will be notified to the Race Committee. Any boat that does not have a valid SCD may be scored DNC without a hearing. This changes RRS 63.1.
- 4.2 The Race Committee may carry out SCD checks at random. A boat not complying with a reasonable request of the Race Committee to carry out a check may have its entry invalidated from the race or series and entry fee paid will not be refunded without a hearing. This changes RRS 63.1.
- 4.3 Upon completion of the SCD, Owners / Skippers shall affix the corresponding safety category sticker to the boat's transom, if issued.
- 4.4 The safety category applicable to each race shall be in accordance with AS SR Part 1 Section 2 or as prescribed in the Notice of Race. In addition all boats shall carry a serviceable VHF radio capable of operating on channels 12, 15, 16, 17, 67, 69, 71, 72, 73 and 82.
- 4.5 No anchor shall be carried on deck forward of the stem or with any part protruding outboard.
- 4.6 Off the beach (OTB) boats shall comply with AS Special Regulations Part 2.
- 4.7 All crews are reminded that they are responsible for their own personal safety irrespective of signals made or not made. It is strongly recommended that crews wear a Personal Floatation Device (PFD) and carry a signalling device such as a light during the hours of darkness, in strong winds and at all other times when it is deemed

prudent. This recommendation does not change any requirements of the AS SR Part 1 or 2 or Victorian Legislation requiring the mandatory wearing of PFDs.

- 4.8 If a gale warning issued by the Bureau of Meteorology is current 4 hours before the scheduled warning signal the race shall be abandoned.
- 4.9 Crew Declarations are to be lodged in accordance with the Notice of Race (NoR). Failure to do so may result in the Race Committee scoring the boat DSQ without a hearing. This changes RRS 63.1.
- 4.10 Any alterations to Crew Declarations are to be lodged in accordance with the Notice of Race (NoR).

5 ELIGIBLE BOATS AND CREW

- 5.1 "RMYS boat" means a boat on the RMYS Yacht Register as defined by the RMYS constitution.
- 5.2 "Eligible Person" means an RMYS member or a non-member holding an RMYS day-pass.
- 5.3 Boats may only be entered in RMYS races by eligible persons as per RRS 46, and RRS 75. Boats must have on board a designated person as per RRS 46.
- 5.4 An RMYS boat racing in an RMYS event whose owner/part owner or with RMYS crew with an RMYS account in arrears may be disqualified (DSQ) or prohibited from racing without a hearing. This changes RRS 63.1.
- 5.5 Boats must be crewed by eligible persons as per RRS 46, and RRS 75. A boat that races with one or more crew who are not eligible persons may be disqualified (DSQ) without a hearing. This changes RRS 63.1.

6 NOTICES TO COMPETITORS

Notices to competitors will be posted on the official notice board located in the RMYS Olympic Bar and may be posted on the RMYS website. Boat representatives may be notified by SMS or email.

7 CHANGES TO SAILING INSTRUCTIONS

- 7.1 Any change to SIs will be posted at least 2 hours before the start of the race on the day it will take effect except that any change to the schedule of races will be posted seven days before it will take effect.
- 7.2 Printed addenda may occasionally be made to these sailing instructions. The version number will be updated and any supplementary documents such as the Racing Programme & Entrants List will specify the current version.

8 SIGNALS MADE ASHORE

- 8.1 Signals will be displayed from the flagstaff above the RMYS clubhouse.
- 8.2 When code flag Q is displayed from the clubhouse, all races scheduled as laid courses will be conducted from the breakwater tower using Squadron courses.

9 SIGNALS MADE AFLOAT

When code flag A is flown from the *Committee Boat* before the warning signal, mark A, will replace the start mark buoy.

10 RACING PROGRAMME & ENTRANTS LIST

A Racing Programme & Entrants List will be issued for each race. It will include boats entered, sail numbers, skippers, handicaps and the following information:

<i>Item</i>	<i>Example</i>
Starting line	Breakwater Start or Boat Start
Type of course	Pursuit, Laid, Squadron or Special
Time limit	4 hours or Specified time
Safety category	Category 6
Version of Sailing Instructions	Version 1.x

11 SCHEDULE OF RACES

The Schedule of Races shall be as specified in the Notice of Race.

12 CLASS FLAGS

Class flags for boats are as follows:

Class	Code Flag
Division 0	D
Division 1	V
Division 2	E
Division 3	T
Combined Divisions	R
Two Handed	W
Cruising	G
Spinnaker Division	K
Non-Spinnaker	O
Multihull	Pink

Class flags for off-the-beach boats are as follows:

Class	Code Flag
Advanced dinghies	D
Intermediate dinghies	J
Quest dinghies	Class flag
Lasers	Class flag
Sabots	Class flag
Pacers	F
Xtreme dinghies	E
Kiteboards	2nd Sub

13 DIVISION FLAGS

Boats competing in races started by division shall fly a divisional flag on their backstay or starboard rigging as follows:

Division	Flag
Division 0	Black
Division 1	Blue
Division 2	Orange
Division 3	White
Spinnaker race started in a Pursuit race sequence	Orange
Cruising	Green
Two Handed	Yellow
Multihull	Pink

14 RACING AREA

- 14.1 The racing area for daylight races, except passage races and inter-club series, is illustrated in *Appendix 1 – The Course Area*.
- 14.2 For races conducted wholly or partly between sunset and sunrise, inter-club series and passage races, the racing area is the waters of Port Phillip.

15 THE COURSES

15.1 Laid Courses

- (a) Laid courses and their relevant diagrams are detailed in *Appendix 3 – Laid Courses*.
- (b) Laid courses to be sailed will be indicated by numeral pennants.
- (c) Courses shall be sailed leaving all marks to port, unless a green flag is flown below the numeral pennant(s) indicating that all marks shall be left to starboard. This does not apply at a gate.
- (d) A magnetic compass bearing to the first mark may be displayed from the *Committee Boat*.
- (e) In the course diagrams and descriptions 'CB' indicates the *Committee Boat*.
- (f) Course diagrams are indicative of each individual leg only. Refer to course descriptions for the number of legs to be sailed and mark rounding order.
- (g) Where a hitch mark is included in the course description, it is designated H.

15.2 Squadron Courses

- (a) Squadron courses are listed in *Appendix 4 – Squadron Courses*.
- (b) Squadron courses use RMYC, RBYC, SYC, and fixed navigational marks as listed in *Appendix 2 – Marks*.
- (c) Courses will be indicated by numeral boards or numeral pennants displayed from the breakwater tower.
- (d) Marks shall be rounded or passed on the side indicated. If all marks are to be left to the same side, this will be shown in the column headed "Side".

15.3 Pursuit Courses

- (a) Pursuit Courses are listed in *Appendix 5 – Pursuit Courses*.
- (b) Pursuit courses use RMYC marks and Parks Victoria mark R2 and RBYC4 as listed in *Appendix 2 – Marks*.
- (c) Courses will be indicated by numeral pennants and/or a red or green flag displayed from the breakwater tower.

- (d) Marks shall be rounded or passed on the side indicated in the column headed Side, unless specified otherwise.

15.4 Special Courses

- (a) Special courses will be detailed in the sailing instructions for the particular race or series.

16 MARKS

16.1 Laid Courses

For laid courses rounding marks will be orange and cylindrical or conical in shape. They may be equipped to carry a black band. Start and Finish pin end marks will be yellow in colour and cylindrical in shape.

16.2 Squadron and Pursuit Courses

Fixed marks including RMYS marks, marks of other clubs, navigation and channel marks are listed in *Appendix 2 – Marks*.

17 AREAS THAT ARE OBSTRUCTIONS

none

18 THE START

18.1 Starting Line

- (a) The start line will be indicated in the Racing Programme & Entrants List. It will be either a *Tower Start* or a *Boat Start*.
- (b) The **Tower Start** line is an imaginary line between the vertical line on the centre of the western face of the breakwater race tower and mark A.
- (c) Mark H is laid a short distance off the breakwater and is an extension of the breakwater tower while a boat is starting until she has cleared both the starting line and mark H. During this time the rules of *RRS Part 2 Section C* do not apply to mark H.
- (d) Note that mark H is not necessarily located directly on the starting line.
- (e) A **Boat Start** line is an imaginary line between the signal mast displaying an orange flag on the *Committee Boat* and a yellow cylindrical buoy.
- (f) The *Committee Boat* will display the RMYS burgee. Failure to display the RMYS burgee will not be grounds for redress. This changes RRS 62.1(a).
- (g) A crowding buoy may be laid near the *Committee Boat* and will be an extension of it. If laid, boats shall leave this mark on the same hand as the *Committee Boat*.

18.2 Timing

Times shall be taken from the visual signals; the failure of a sound signal shall be disregarded.

18.3 Starting Procedures

- (a) Starting procedures for pursuit races are detailed in *section 33.3*.
- (b) Starting procedures for races started after sunset are detailed in *section 34.2*.

- (c) All races except for pursuit races and races started after sunset will be started in accordance with RRS 26 as follows:

STARTING PROCEDURE			
Signal	Flag	Sound	Minutes before starting signal
Warning	Class flag;	1 sound	5
Preparatory	P,I, Z, Z with I, or black flag	1 sound	4
One minute	Preparatory flag removed	1 long sound	1
Starting	Class flag removed	1 sound	0

- (d) The Warning signal for each succeeding class shall be made with or after the Starting signal for the preceding class.

18.4 Pre-race sign-on schedule:

- (a) A pre-race sign on schedule for all passage and night races will be conducted by RMYs on VHF channel 72, commencing no later than 30 minutes before the warning signal. Boats will be called in the order they appear on the starters list and should respond: "(Boat Name) is a starter, (xx) persons on board, over"
- (b) Boats who do not respond on the first call must wait until they are re-called at the end of the schedule.
- (c) Failure to sign on at the pre-race schedule may be scored DNS without a hearing. This changes RRS 63.1.
- (d) A boat starting later than ten (10) minutes after her starting signal will be scored DNS without a hearing. These changes RRS 63.1.

18.5 Recalls

- (a) Individual recalls will be made in accordance with RRS 29.1. An announcement of premature starters may be made by radio on VHF channel 72.
- (b) General recalls will be made in accordance with RRS 29.2.
- (c) When a general recall has been signalled, the start(s) for the succeeding class(es) will be postponed accordingly.

19 CHANGE OF COURSE AFTER A BOAT START

- 19.1 When changing the course after the start, the race committee will lay a new mark and lift the original mark as soon as practicable. Any mark to be rounded after the new mark may also be relocated to maintain the original course configuration.
- 19.2 A change of course will be signalled by a *race committee vessel* stationed near the mark beginning the leg being changed. The vessel will display code flag C and make repetitive sound signals. The change will be signalled before the leading boat has begun the leg, even if the new mark is not yet in position.
- 19.3 If the new mark is itself to be replaced in a subsequent change of course, it will be replaced with the original mark.

20 SHORTENING COURSE

- 20.1 Shortened course will be signalled in accordance with RRS 32.

20.2 For Squadron courses, when code flag S is displayed, finish between mark A and the breakwater tower.

21 RETIREMENT

21.1 Boats retiring during the course of a race shall notify the Race Committee of their retirement or intention to retire as soon as practicable via the best means available.

21.2 Boats who have completed a crew declaration shall notify the Race Committee if they do not intend to start.

22 THE FINISH

22.1 The **Tower Finish** line is an imaginary line between the vertical line on centre of the western face of the breakwater race tower and mark A.

(a) Mark H is laid a short distance off the breakwater and is an extension of the breakwater tower while a boat is finishing until she has cleared the finishing line and mark H.

(b) Note that mark H is not necessarily located directly on the finishing line.

22.2 A **Boat Finish** line is an imaginary line between the signal mast displaying an orange flag on the *Committee Boat*, and a yellow cylindrical buoy.

23 TIME LIMIT

23.1 The time limit will be as stated on the Racing Programme & Entrants List.

23.2 A boat failing to finish within 60 minutes after the first boat finishes, or within the time limit, whichever is the later, shall be scored Did Not Finish (DNF). This changes RRS 35.

23.3 The absolute time limit for Category 5, 6 & 7 races is 10 minutes before sunset even if a later time may otherwise apply.

23.4 At the expiry of the time limit, the Race Officer may advise on the race channel that no boat has finished within the time limit.

23.5 Boats are reminded of the Maritime Safety Victoria requirement to exhibit appropriate lights after sunset.

24 PROTESTS AND REQUESTS FOR REDRESS

24.1 Protests and requests for redress shall be lodged in accordance with RRS Part 5, Section A.

24.2 Protests shall be lodged at the RMYS Office not later than 1000 hrs on the next RMYS Office business day following the race.

24.3 Arbitration

(a) At the discretion of the Protest Committee, an arbitration meeting may be held under RRS Appendix T prior to a protest hearing involving an alleged breach of a rule of RRS Part 2 or rule 31.

24.4 Protests may be heard at the RMYS clubhouse at 1900 hrs on the first Thursday following the race, unless otherwise advised.

25 SCORING

The Low Point scoring system, RRS Appendix A, shall apply. The number of races scheduled and the number to be completed will be stated in the Notice of Race.

26 RACES NOT COMPLETED

Provisions for sailing of races scheduled but not completed, if required, will be prescribed in the Notice of Race and advised by a Notice to Competitors.

27 HANDICAPS AND RATINGS

RMYS reserves the right to alter or adjust the performance based handicap of boats entered in races it is conducting according to AS guidelines.

Time correction factors for events conducted for a rating system will be as disclosed on the current certificate; other information may be obtained from the relevant authority.

Any change that may affect the performance of a boat in a performance based handicap series or race, including the nominated skipper, helmsman or tactician, sails, ballast or measurement, shall be notified in writing to the race committee not less than 24 hours prior to the next race.

28 RADIO COMMUNICATION

Except in an emergency, a boat that is racing shall not make voice or data transmissions and shall not receive voice or data communication that is not available to all boats.

29 RACE RESULTS

Race results may be announced at the RMYS clubhouse and displayed on the notice board on the day of the race; results may also be displayed on the RMYS website and other digital media.

30 STARTERS AND PRIZES

30.1 A minimum of three starters is required for a race to be started.

30.2 Prizes will be awarded at the discretion of the Race Committee based on the following guide:

- (a) 1st prize only shall be awarded for races with three starters.
- (b) 1st and 2nd prize only shall be awarded for races with four to seven starters.
- (c) 1st, 2nd and 3rd prizes shall be awarded for races with eight or more starters.
- (d) For Pursuit races, a prize shall be awarded for the boat that starts closest to its allocated start time.

31 DISCLAIMER OF LIABILITY

Competitors participate in events entirely at their own risk. See RRS 4, Decision to Race. Royal Melbourne Yacht Squadron, its officers, members, employees, contractors and agents will not accept any liability for material damage or personal injury or death sustained in conjunction with or prior to, during, or after the regatta.

32 INSURANCE

32.1 The owners/skippers of boats competing or participating in any event organised by Royal Melbourne Yacht Squadron shall ensure that the boat has third party property and personal injury insurance cover including racing risk cover for not less than AUD \$10,000,000.

32.2 Owners/skippers may be required to produce evidence of such insurance. Any entry failing to comply shall withdraw their entry before commencing racing or may be disqualified without a hearing. This changes RRS 63.1

33 SPECIAL INSTRUCTIONS FOR PURSUIT RACES

33.1 Sails to be used in Pursuit races

- (a) Non Spinnaker Division or Races - Only headsails used for sailing close hauled to windward, mainsails and mizzens shall be used. All headsails shall be attached to the forestay at all times when they are being flown.
- (b) Spinnaker Pursuit Division or Races –There is no restriction on flying the boats usual spinnakers.

33.2 Use of Engines

Boats using their engines for propulsion after their preparatory signal shall stop their engines and execute a two turn penalty before starting.

33.3 Starting Procedures

- (a) After the initial warning signal, boats proceeding to the pre-start side shall not cross the start line from the course side to the pre-start side.

PURSUIT STARTING PROCEDURE (This changes RRS 26)			
Signal	Flag	Sound	Minutes before and after starting signal
	Squadron burgee on tower when manned or a race committee vessel if applicable		
Warning	Course flag(s) & zero displayed	1 sound	5
Preparatory	"P" flag	1 sound	4
One-minute	"P" flag removed	1 long sound	1
Starting	Number Board 00 removed	1 sound	0
Start of boats on 1 min handicap	Number Board 01 removed	1 sound	+1
Start of boats on 6 min handicap	Number Board 06 removed	1 sound	+6
Start of boats on 7 min handicap	Number Board 07 removed	1 sound	+7

- (b) Boats will be allocated a start time from zero upwards in whole minutes relative to their handicap. The first boat(s) to start will be allocated minute zero. Allocated times may not necessarily be consecutive. The start minute will be displayed using number boards in the start tower as an integer, e.g. 00, 06, 07, 11, 14 etc.

For example, if the actual start for the first boat is 1800hrs:

Scheduled Start Time – 18:00		
Allocated Start time	Number Board	Start Time
0:00	00	1800hrs

0:06	06	1806hrs
0:07	07	1807hrs
0:11	11	1811hrs
0:14	14	1814hrs

- (c) The first boat(s) start in accordance with RRS 26 except that number boards '00' will be displayed as the warning signal and lowered as the start signal.
- (d) For subsequent boats, their preparatory signal and their one minute signal is at four minutes and at one minute respectively before their nominal starting time. Their starting signal will be the removal of the number board relative to their allocated start time. This changes RRS 26.
- (e) Boats not yet racing (before their deemed preparatory signal) shall keep clear of boats that are racing (after their deemed preparatory signal) at least 50m from the start line. If reasonably possible, a boat not racing shall not interfere with a boat that is racing.

33.4 Postponing Pursuit Races

- (a) Postponement of pursuit races shall be in accordance with RRS 27.3.
- (b) In the event of postponement, the minutes allocated will remain the same. Boats will start at their allocated number of minutes after the rescheduled start time. The start sheet will not be reprinted. Boats will be advised of the rescheduled start time via VHF radio and boat owners may be notified via text message.

33.5 Individual recalls - Pursuit races

- (a) Boats breaking their allocated start by one minute or more shall have that amount of time, which they would otherwise have saved, added to their elapsed time and then a further 10% time penalty added. No recall signal shall be made. This changes RRS 29.1.
- (b) Boats breaking their allocated start by less than one minute: The race committee shall promptly display code flag 'X' accompanied by one sound signal. The flag will be displayed for a period of 30 seconds or until all such boats are completely on the pre-start side of the line or its extensions, whichever is earlier. A 10% elapsed time penalty shall apply to boats that fail to start correctly. This changes RRS 29.1.

33.6 General recalls - Pursuit races

There shall be no general recalls. This changes RRS 29.2

34 SPECIAL INSTRUCTIONS FOR NIGHT RACES

34.1 Right of way rules

Between sunset and sunrise, the International Regulations for Preventing Collisions at Sea (COLREGs) replace the rules in RRS Part 2.

34.2 Starting procedures - Races started after sunset

STARTING PROCEDURE (This changes RRS 26)			
Signal	Light	Sound	Minutes before starting signal
Warning	Amber strobe light displayed	1 sound	5
Preparatory	Blue strobe light displayed	1 sound	4

One-minute	Blue strobe light extinguished	1 long sound	1
Starting	Amber strobe light extinguished	1 sound	0

34.3 Individual recalls - Night races

When at her starting signal, any part of a boat's hull, crew or equipment is on the course side of the starting line, the race committee will promptly display a blue strobe light accompanied by one sound signal until all such boats are wholly on the pre-start side of the line or for four minutes, whichever is earlier. A general announcement indicating premature starters may also be made by radio on VHF Channel 72. This changes RRS 29.1.

34.4 General recalls - Night races

There shall be no general recalls. This changes RRS 29.2.

34.5 Shortening course

The course may be shortened at mark A. As the first boat approaches the finish an amber strobe light will be illuminated from the Breakwater Tower, accompanied by two sound signals. Notification may also be made by radio on VHF Channel 72. This changes RRS 32.

34.6 Postponement

Before the starting signal the race committee may postpone the race for any reason. Postponement shall be signalled by a red strobe light, accompanied by two sound signals. An announcement and a time proposal for the new warning signal may be broadcast by radio on VHF Channel 72. This changes RRS 27.3

34.7 Abandonment

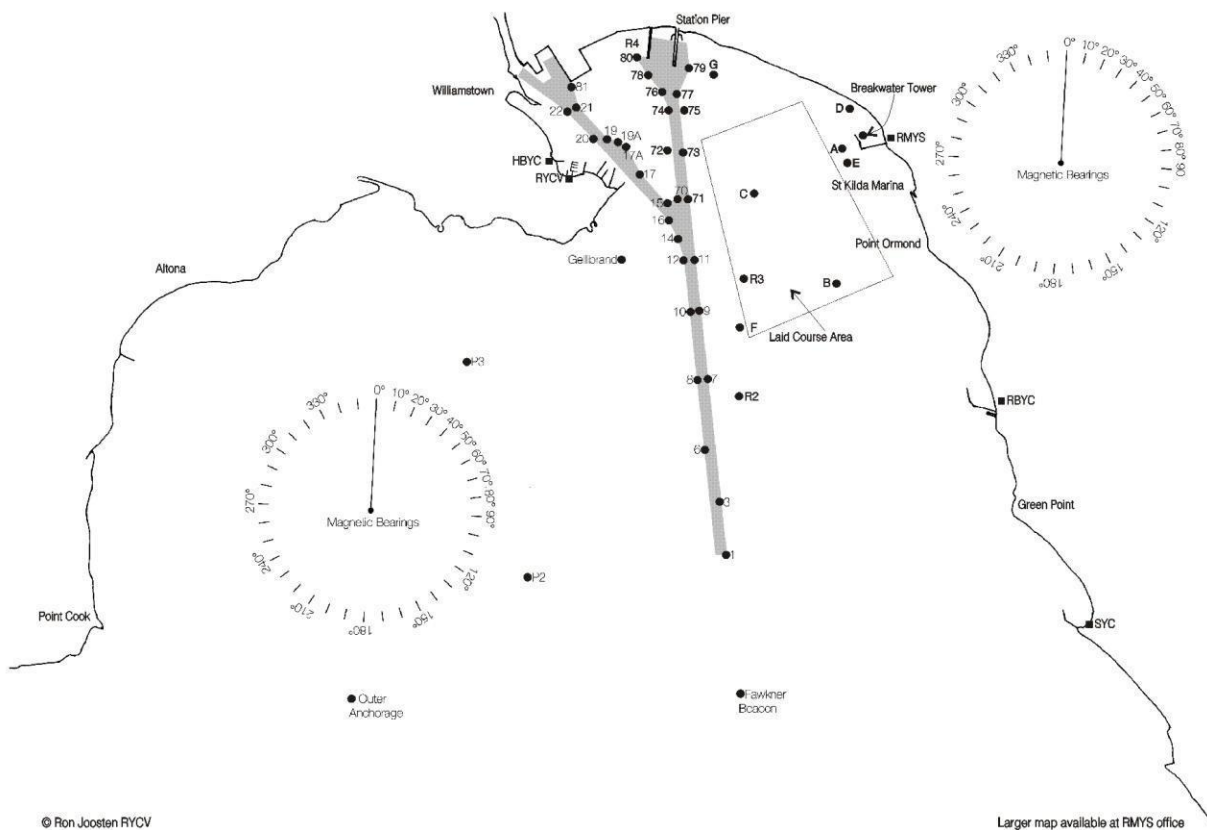
The race committee may at any time, and for any reason, abandon the race. Abandonment shall be signalled by both red and blue strobe lights, accompanied by three sound signals. No further racing for the day (night) will take place. An announcement may be made by radio on VHF Channel 72. This changes RRS 27.3 & 32.

34.8 Finishing

Boats finishing between sunset and sunrise are requested to notify RMYS race control by radio (call sign - Squadron Tower) on VHF channel 72 when 1nm from the finish and illuminate their sail numbers continuously from 100 metres before the finish line until they have cleared the finish line. Boats should briefly radio Squadron Tower announcing their sail number when crossing the finish line.

35 APPENDICES

Appendix 1 – The Course Area



CAUTION! THIS MAP MUST NOT BE USED FOR NAVIGATION

Appendix 2 – Marks

A2.1 RMYS Club Marks

Each RMYS fixed mark is a yellow cylinder topped with a light and may be fitted with a St Andrew’s Cross. They are designated A, B, C, D, E, F, G & H and carry the wording “RMYS Yachting Mark 03 9534 0227”. The light sequence for these marks is Fl(4)Y.10s. Their approximate locations are listed in the following table.

RMYS MARKS			
Mark	Description	Lat °S	Long °E
RMYS A	yellow + cross + light	37° 51.90'	144° 57.46'
RMYS B	yellow + cross + light	37° 53.27'	144° 57.13'
RMYS C	yellow + cross + light	37° 52.20'	144° 56.40'
RMYS D	yellow + cross + light	37° 51.49'	144° 57.47'
RMYS E	yellow + cross + light	37° 52.15'	144° 57.79'
RMYS F	yellow + cross + light	37° 53.69'	144° 56.21'
RMYS G	yellow + cross + light	37° 50.98'	144° 56.16'
RMYS H (distance mark)	yellow + light	37° 51.86'	144° 57.69'

Note that mark H is a distance mark laid adjacent to the breakwater. It is laid close to the tower start/finish line but is not necessarily located directly on the line. While a boat is starting or finishing mark H must be left on the same side as the Race Control Tower.

A2.2 Marks of Other Clubs

Royal Brighton Yacht Club (RBYC) MARKS ¹			
Mark	Description	Lat °S	Long °E
RBYC 1	yellow	37° 55.63'	144° 58.24'
RBYC 2	yellow	37° 55.40'	144° 57.37'
RBYC 3	yellow	37° 54.46'	144° 57.16'
RBYC 4	yellow	37° 53.61'	144° 57.08'
RBYC 5	yellow	37° 53.81'	144° 58.46'
RBYC 6	yellow	37° 54.35'	144° 58.53'

Sandringham Yacht Club (SYC) MARKS ²			
Mark	Description	Lat °S	Long °E
SYC 1	yellow pyramid + cross + light	37° 57.80'	144° 58.89'
SYC 2	yellow pyramid + cross + light	37° 56.60'	144° 57.97'
SYC 3	yellow pyramid + cross + light	37° 56.24'	144° 59.25'
SYC 4	yellow pyramid + cross + light	37° 56.81'	144° 59.40'
SYC 5	yellow pyramid + cross + light	37° 58.81'	144° 58.38'
SYC 6	yellow pyramid + cross + light	37° 56.70'	144° 57.08'
SYC 7	yellow pyramid + cross + light	37° 55.85'	144° 59.01'
SYC 8 (crowding mark)	yellow cone + cross + light	see footnote ³	

¹ Correct as at 26-Nov-2018. Check RBYC SIs and latest changes to SIs for current positions.

² Correct as at 26-Nov-2018. Check SYC SIs and latest changes to SIs for current positions.

³ Approx 0.1nm at 243mag from SYC Race Control Tower. It may be somewhere near 37° 56.78' 144° 59.59'.

A2.3 Fixed Navigation & Channel Marks

The positions of fixed navigation marks listed below are as shown on the current Australian charts AUS 143, 154 and 155 as modified by Notices to Mariners. Latitude and longitude are approximate and no guarantee of accuracy may be presumed.

FIXED NAVIGATION MARKS			
Mark	Description	Lat °S	Long °E
BLA	Blairgowrie Finish Line	38° 21.29'	144° 46.53'
CAR2	Carrum No. 2	38° 03.03'	145° 04.65'
FWK	Fawkner Beacon	37° 56.93'	144° 56.61'
GB	Gellibrand Pile	37° 52.62'	144° 54.88'
MORN	Finish line at Mornington	38° 12.64'	145° 02.20'
OA	Outer Anchorage	37° 56.91'	144° 51.52'
PARL	Finish line at Portarlington	38° 06.61'	144° 39.14'
PGB	Prince George Bank Beacon	38° 06.50'	144° 44.12'
PHEN	Channel Mark off Point Henry	38° 07.30'	144° 26.70'
PWIL	End of Point Wilson pier	38° 05.80'	144° 32.30'
PR1	Point Richards No. 1 Beacon	38° 05.16'	144° 38.48'
P2	Pipeline No. 2 Buoy	37° 55.44'	144° 53.20'
P3	Pipeline No. 3 Buoy	37° 53.40'	144° 52.87'
R1	Recreational Buoy No. 1	38° 16.35'	144° 58.44'
R2	Recreational Buoy No. 2	37° 54.56'	144° 56.34'
R3	Recreational Buoy No. 3	37° 53.16'	144° 56.39'
R4	Recreational Buoy No. 4	37° 50.70'	144° 55.36'
SC19	South Channel Mark 19	38° 20.20'	144° 54.40'
SPG	Spoil Ground Buoy	37° 59.10'	144° 53.00'
WCH	West Channel Pile	38° 11.66'	144° 45.32'
T1	Transit lane 1	38° 00.01'	144° 55.66'

CHANNEL MARKS		
Mark	Lat °S	Long °E
Ch 01	37° 55.60'	144° 55.62'
Ch 03	37° 55.08'	144° 56.50'
Ch 06	37° 54.56'	144° 55.53'
Ch 07	37° 53.85'	144° 55.70'
Ch 08	37° 53.85'	144° 55.59'
Ch 10	37° 53.18'	144° 55.59'
Ch 11	37° 52.68'	144° 55.76'
Ch 12	37° 52.68'	144° 55.62'
Ch 15	37° 52.09'	144° 55.55'
Ch 17	37° 51.80'	144° 55.28'
Ch 17A	37° 51.55'	144° 55.18'
Ch 19	37° 51.48'	144° 55.00'
Ch 19A	37° 51.50'	144° 55.12'
Ch 21	37° 51.23'	144° 54.78'
Ch 70	37° 52.07'	144° 55.65'
Ch 71	37° 52.20'	144° 55.70'
Ch 72	37° 51.723'	144° 55.669'
Ch 74	37° 51.30'	144° 55.68'
Ch 75	37° 51.304'	144° 55.786'
Ch 76	37° 51.10'	144° 55.63'
Ch 77	37° 51.14'	144° 55.79'
Ch 79	37° 50.86'	144° 55.98'
Ch 80	37° 50.743'	144° 55.530'
Ch 81	37° 51.03'	144° 54.75'

Appendix 3 – Laid Courses

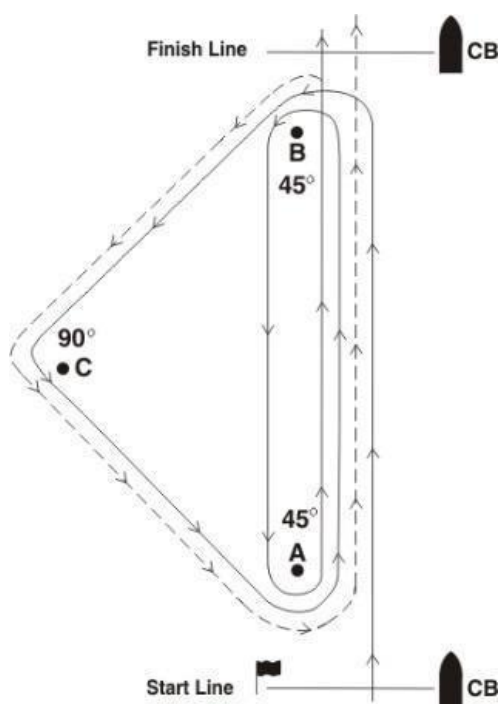
A5.1 General

- (a) Laid courses to be sailed will be indicated by numeral pennants.
- (b) Courses shall be sailed leaving all marks to port, unless a green flag is flown below the numeral pennant(s) indicating that all marks shall be left to starboard.
- (c) A compass bearing to the first mark may be displayed from the *Committee Boat*.
- (d) In the course diagrams and descriptions, 'CB' indicates the *Committee Boat*.
- (e) Course diagrams are indicative of each individual leg only. Refer to course descriptions for the number of legs to be sailed and mark rounding order.
- (f) Where a hitch mark is included in the course description, it is designated H.

A3.2 Triangle - windward & return courses

- (a) The start line may be laid approximately 0.1 nm downwind of mark A.
- (b) The finish line may be laid approximately 0.1 nm upwind of mark B.
- (c) The Race Officer will, at their discretion, set the length of each leg and reserves the right to lengthen, shorten or swing the course.

TRIANGLE WINDWARD & RETURN COURSES		
No.	Course	Legs
1	Start, B, C, A, B, A, finish	6
2	Start, B, C, A, B, A, B, A, finish	8
3	Start, B, C, A, B, A, B, C, A, finish	9



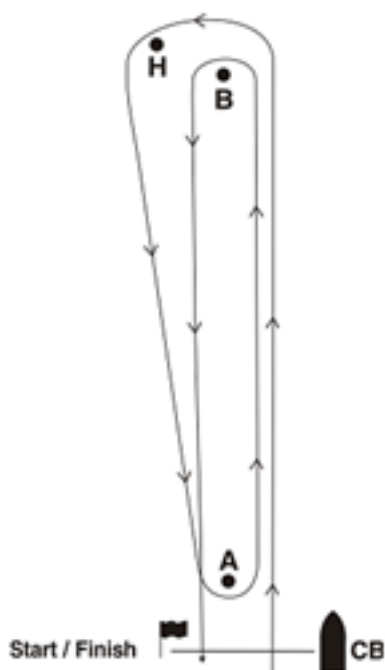
A3.3 Windward & return courses

- (a) The start line may be laid approximately 0.1 nm downwind of mark A.
- (b) The finish line may be laid approximately 0.1 nm upwind of mark B.
- (c) The Race Officer will, at their discretion, set the length of each leg and reserves the right to lengthen, shorten or swing the course.

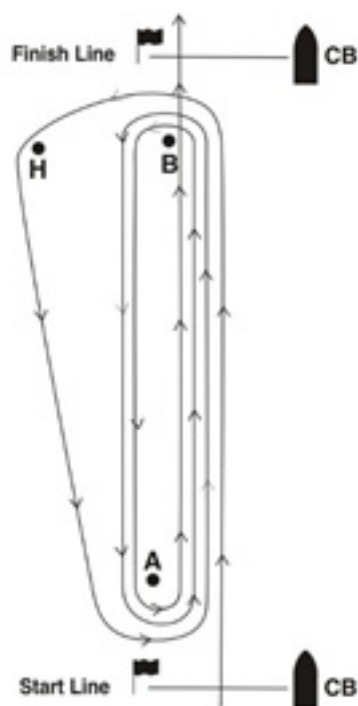
WINDWARD AND RETURN COURSES		
No.	Course	Legs
4	Start, B, H, A, B, finish	4
5	Start, B, H, A, B, A, finish	5
6	Start, B, H, A, B, A, B, finish	6
7	Start, B, H, A, B, A, B, A, finish	7

Courses 4 and 6

Courses 5 and 7



Extra laps omitted for clarity

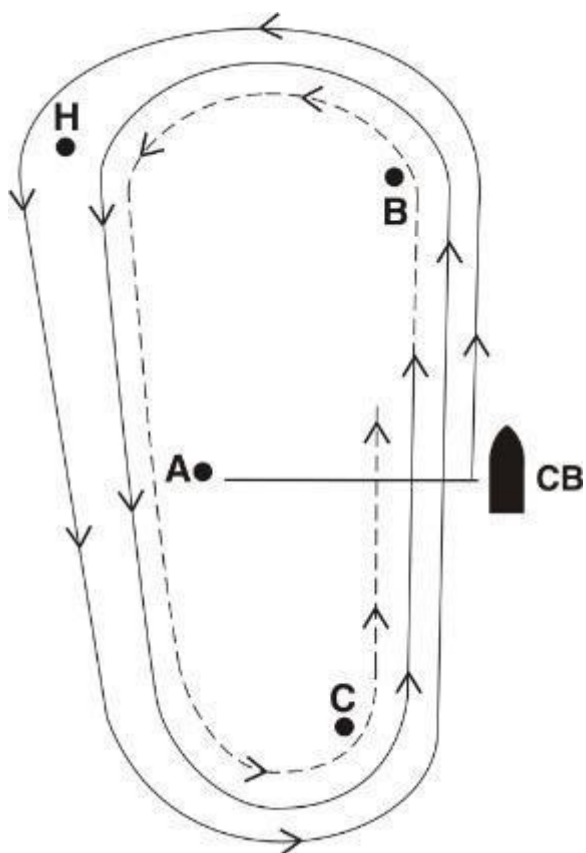


A3.4 Windward & return courses with gate

(a) The Race Officer will, at their discretion, set the length of each leg and reserves the right to lengthen, shorten or swing the course.

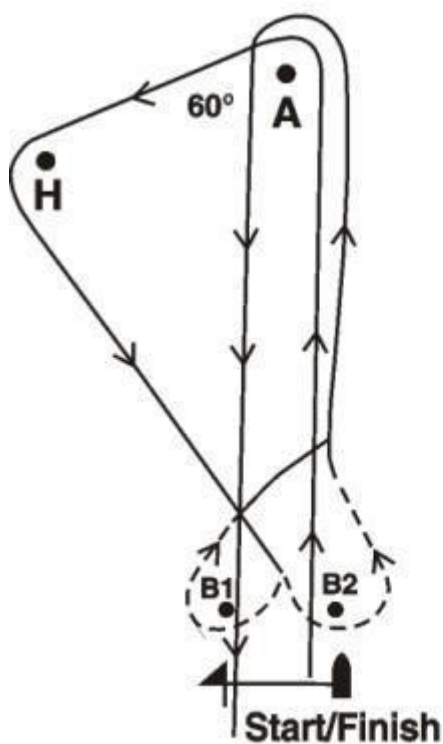
WINDWARD AND RETURN COURSES WITH WINDWARD GATE		
No.	Course	Legs
8	Start, B, H, C, B, C, B, C, finish On legs B-C pass A(P) or CB(S) On legs C-B pass A(P) and CB(S)	7
9	Start, B, H, C, B, C, finish On legs B-C, A(P) or CB(S) On legs C-B, A(P) and CB(S)	5

Courses 8 and 9

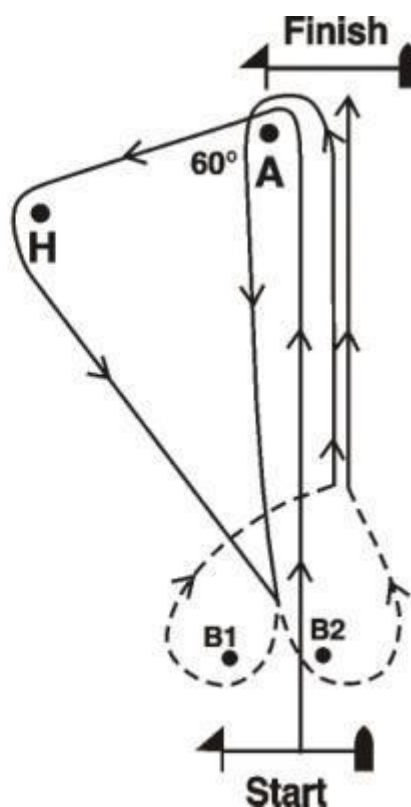


WINDWARD AND RETURN COURSES WITH LEEWARD GATE		
No.	Course	Legs
10	Start, A, H, B1/B2, A, finish	4
11	Start, A, H, B1/B2, A, B1/B2, finish	5
12	Start, A, H, B1/B2, A, B1/B2, A, finish	6
13	Start, A, H, B1/B2, A, B1/B2, A, B1/B2, finish	7

Courses 10 & 12



Courses 11 & 13



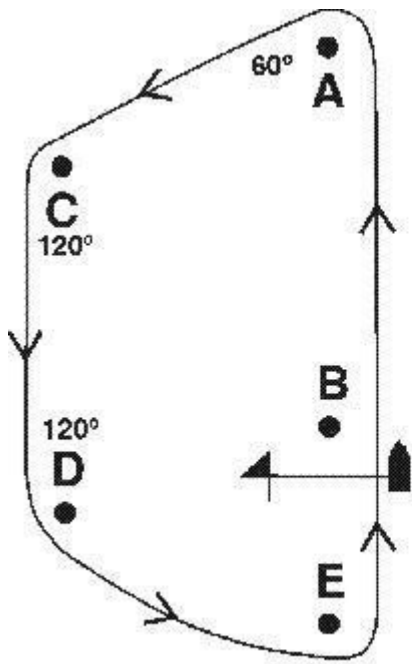
Extra lap omitted for clarity (course 12)

A3.5 Trapezoid Courses

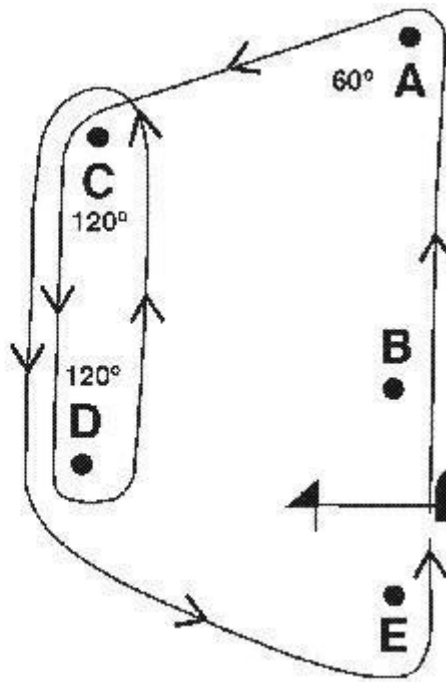
- (a) The Race Officer will, at their discretion, set the length of each leg and reserves the right to lengthen, shorten or swing the course.

No.	Course	Legs
14	Start, A, C, D, E, Finish	5
15	Start, A, C, D, C, D, E, Finish	7
16	Start, A, C, D, C, D, C, D, E, Finish	9
17	Start, A, B, A, C, D, E, Finish	7
18	Start, A, B, A, B, A, C, D, E, Finish	9

Course 14

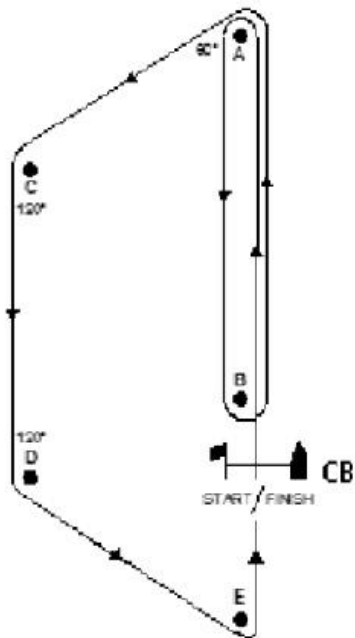


Courses 15 & 16



Extra lap omitted for clarity (course 16)

Courses 17 & 18



Extra lap omitted for clarity (course 18)

Appendix 4 – Squadron Courses

P and S are used below in the ‘Course’ and ‘Side’ columns to indicate that a mark should be left to Port or Starboard respectively. An asterisk ‘*’ in the ‘Side’ column indicates that all marks should be passed on the given side except where otherwise specified in the Course.

Mark names enclosed in square brackets (eg. [A], [GB] or [FWK]) must be passed on the correct side but are not rounding marks for the purposes of RRS 28.2(b).

A boat shall leave mark A on the same side as the Race Control Tower unless otherwise specified in the Course. This changes RRS 28.1.

SQUADRON COURSES			
No.	Course	Side	Approx Dist. (nm)
1 & numeral	Start E C D A, numeral times. finish	S	3.0 x numeral
2 & numeral	Start D C E A, numeral times, finish	P	3.0 x numeral
3 & numeral	Start B A D finish, numeral times	S	3.4 x numeral
4 & numeral	Start D A B finish, numeral times	P	3.4 x numeral
5	Start D C B A B finish	P	6.9
6	Start B C D A B A D finish	S	7.7
7	Start B C D A B C D finish	S	8.3
8	Start D C B A D C B finish	P	8.3
9	Start G C E A G A E finish	P	7.6
10	Start R2 C D A B A D finish	S	10.3
11	Start D C R2 A D A B finish	P	10.3
12	Start D GB(S) P3 R2 finish	P*	10.3
13	Start B C D A B [A] D A B [A] D finish	S	11.4
14	Start D C B A D [A] B A D [A] B finish	P	11.4
15	Start B C D A B [A] D A B C D finish	S	11.9
16	Start D C B A D [A] B A D C B finish	P	11.9
17	Start G R2 A R3 finish	P	10.8
18	Start G C E A G [A] E A G C E finish	P	11.6
19	Start R3 P3 GB(P) D A B C D finish	S*	13.0
20	Start R2 [A] D A R2 [A] D finish	S	12.8
21	Start R2 G A R3 G finish	S	12.8
22	Start G R2 A G R3 finish	P	12.8
23	Start G GB(S) P3 R2 A G finish	P*	13.7
24	Start G R2 A R2 finish	P	13.3
25	Start R2 A R2 G finish	S	13.3
26	Start F C D A F [A] D A F C D finish	S	15.0
27	Start FWK(S) RBYC1 C R2 G(S) finish	P*	18.7
28	Start G(P) R2(S) C(S) RBYC1(S) FWK(P) E(P) finish		18.9
29	Start FWK P3 GB(P) D A R2 [A] D finish	S*	20.3
30	Start G R2 A G R2 A G R3 finish	P	20.6
31	Start G GB(S) P3 T1 G(S) finish	P*	22.5
32	Start B(S) P3 OA FWK C R2 E finish	P*	21.9
33	Start R2 G A R2 G A R3 G finish	S	20.6
34	Start R2 OA P3 GB(P) D A R2 [A] D finish	S	21.9
35	Start FWK OA D A R2 [A] D finish	S	22.5
36	Start RBYC1 P2 R3 RBYC1 P2 RBYC1(P) E(P) finish	S*	25.9
37	Start RBYC1 P2 R3 RBYC1 P3 RBYC1(P) E(P) finish	S*	27.6
38	Start RBYC1 P3 R3 RBYC1 P3 RBYC1(P) E(P) finish	S*	27.9

RYMS Sailing Instructions 2018-2020 (v0.4)

39	Start R2(P) SYC1 OA P3 R2 SYC1 OA P3 R3 D finish	S*	37.7
40	Start G R2(S) OA(S) P3(S) GB(pass) A G R2 E A G R2 E finish	P*	33.0
41	Start FWK(P) SYC1 OA P3 FWK(pass) SYC1 OA P3 R3(P) D finish	S*	38.7
42	Start R1 OA P2(P) GB(P/pass) G finish	S*	53.0
43	Start R1 PGB OA P3 GB G finish	S	59.2

Appendix 5 – Pursuit Courses

The notes at the beginning of *Appendix 4 – Squadron Courses* also apply here.

PURSUIT COURSES			
Course Flag	Course	Side	Dist. (nm)
Red Flag	Start G F E Finish	P	6.4
Red flag + 1	Start G C E Finish	P	4.1
Red flag + 2	Start D F E Finish	P	5.2
Red flag + 3	Start D C F E Finish	P	5.4
Red flag + 4	Start G A E Finish	P	3.5
Red flag + 5	Start D C E Finish	P	3.0
Red flag + 6	Start G R2 E Finish	P	8.0
Green flag	Start E F G D Finish	S	6.6
Green flag + 1	Start E C G D Finish	S	4.3
Green flag + 2	Start E F D Finish	S	5.2
Green flag + 3	Start E F C D Finish	S	5.4
Green flag + 4	Start RBYC4 F C D Finish	S	5.4
Green flag + 5	Start E C D Finish	S	3.0
Green flag + 6	Start E R2 G D Finish	S	8.2
Numeral 1	Start G C D(S) Finish	P*	4.1
Numeral 2	Start D(P) C G D Finish	S*	4.3
Numeral 3	Start B(P) E(P) C(S) D(S) Finish		5.3
Numeral 4	Start D(P) C(P) E(S) B(S) Finish		5.3
Numeral 5	Start E(S) C F E Finish	P*	5.3
Numeral 6	Start E F C E(P) Finish	S*	5.3
Numeral 7	Start E(S) C R2 E Finish	P*	6.8
Numeral 8	Start E R2 C E(P) Finish	S*	6.8
Numeral 9	Start D A F(S) C(S) B E Finish	P*	7.2
Numeral 10	Start E B C(P) F(P) A D Finish	S*	7.2