

RMYS News - 2008

10 January 2008

Columbia Series - 34292



Sarah Phillips, Below, Thursday, 10 January 2008

Sunday 3rd February 2008 Columbia Race 3 has been cancelled, due to a lack of entrants, if you wish to compete in the remainder of the series please follow link to enter online.

Other Links

[Enter Here](#)

Stonehaven Cup Regatta 2008 King Island - 34296



2008 Stonehaven Cup Regatta in King Island

Sarah Phillips, Thursday, 10 January 2008

RMYS Juniors recently competed in the 2008 Stonehaven Cup Regatta in King Island, congratulations to all those who competed you did really well!

Other Links

[Click Here for results published on RBYC Website](#)



Stonehaven Cup @ King Island



Stonehaven Cup @ King Island



Stonehaven Cup @ King Island



Stonehaven Cup @ King Island



Stonehaven Cup @ King Island



2008 Stonehaven Cup Regatta in King Island



2008 Stonehaven Cup Regatta in King Island



2008 Stonehaven Cup Regatta in King Island



2008 Stonehaven Cup Regatta in King Island



2008 Stonehaven Cup Regatta in King Island



2008 Stonehaven Cup Regatta in King Island

15 January 2008

2008 Simrad Big Bay Challenge - 34372



Big Bay Challenge 2008 11th - 12th April

Sarah Phillips, Below, Tuesday, 15 January 2008

2008 Simrad Big Bay Challenge to be held 11th - 12th of April 2008. Presentation Dinner and Crew Party to follow on Saturday night 12th April 2008. website now operational...Click to Follow Link!

Other Links

Big Bay Website

[Online Entry](#)

(Note: A link was removed as the page is no longer available.)

18 January 2008

Now Accepting Entries for Agar Wynne - 34425



Agar Wynne

Sarah Phillips, Friday, 18 January 2008

Passage race from Geelong to Melbourne 28th Jan 2008, please have entries in by 12pm 22nd Jan 2008...click for more info.

Other Links

NOR

SI

Entry

(Note: The links were removed as the pages are no longer available.)

19 January 2008

Notices to Mariners Edition 1 - 34446

Wendell Raven, Saturday, 19 January 2008

Please note the following notices to mariners issued by the Australian Hydrographic Service.

More detailed information, along with notices for areas other than Victoria can be found the [Australian Hydrographic Service website](#).

Victorian notices can also be found on the Port of Melbourne and Parks Victoria websites.

(Note: The links were removed as the pages are no longer available.)

Notices for charts:

NOTICES TO MARINERS for Aus141

79(T)/2008 AUSTRALIA - VICTORIA - Apollo Bay - Harbour works complete.
Former Notice 943(T)/2007 is cancelled
Victorian Notice 115(T)/2007 (AA289562)

Cancel this notice on receipt

NOTICES TO MARINERS for Aus143

53* AUSTRALIA - VICTORIA - Port Phillip - Middle Ground - Light buoy.
Victoria Notice 152/2007 (AA300469)

Aus143 [1067/2007]

Insert special cylindrical light bouy, Fl.Y.4s , with topmark 38 18.88 S 144 52.04 E

80(T)/2008 AUSTRALIA - VICTORIA - Port Phillip - Entrance Deep - Underwater survey work completed.
Former Notice 706(T)/2007 is cancelled
Port Melbourne Corp (AA305188)

Cancel this notice on receipt

NOTICES TO MARINERS for Aus144

80(T)/2008 AUSTRALIA - VICTORIA - Port Phillip - Entrance Deep - Underwater survey work completed.
Former Notice 706(T)/2007 is cancelled
Port Melbourne Corp (AA305188)

Cancel this notice on receipt

NOTICES TO MARINERS for Aus154

81(T)/2008 AUSTRALIA - VICTORIA - Port Phillip - Port Melbourne Channel - Station Pier - Shoaling.
Former Notice 421(T)/2006 is cancelled
Victorian Notice 124(T)/2007 (AA292404)

Cancel this notice on receipt

82(T)/2008 AUSTRALIA - VICTORIA - Port Phillip - Port Melbourne - Construction works completed.
Former Notice 747(T)/2007 is cancelled
Victorian Notices (AA305186)

Cancel this notice on receipt

NOTICES TO MARINERS for Aus158

52* AUSTRALIA - VICTORIA - Port Phillip - The Rip - Depths.
Port Melbourne Corp (AA282608)

Aus158 [689/2007]

Insert accompanying block 38 18.50 S 144 38.00 E

You can access the accompanying block/plan by using the following
link:http://www.hydro.gov.au/n2m/2008/blocks/aus158_52_2008.pdf

53* AUSTRALIA - VICTORIA - Port Phillip - Middle Ground - Light buoy.
Victoria Notice 152/2007 (AA300469)

Aus158 [52/2008]

Insert special cylindrical light bouy, Fl.Y.4s, with topmark 38 18.88 S 144 52.04 E

80(T)/2008 AUSTRALIA - VICTORIA - Port Phillip - Entrance Deep - Underwater survey work completed.
Former Notice 706(T)/2007 is cancelled
Port Melbourne Corp (AA305188)

Cancel this notice on receipt

31 January 2008

Notices to Mariners Edition 2 - 34662

Wendell Raven, Thursday, 31 January 2008

Please note the following notices to mariners issued by the Australian Hydrographic Service.

More detailed information, along with notices for areas other than Victoria can be found the [Australian Hydrographic Service website](#).

Victorian notices can also be found on the Port of Melbourne and Parks Victoria websites.

(Note: The links were removed as the pages are no longer available.)

Notices for charts:

NOTICES TO MARINERS for Aus143

103* AUSTRALIA - VICTORIA - South Channel to Ricketts Point - Scientific instruments.
Victorian Notice 165/2007 (AA306741)

Aus143 [53/2008]

Insert special conical light buoy, Fl.Y.2s, without topmark 38 21.15 S 144 46.17 E

Aus143 [53/2008]

Insert special conical light buoy, Fl.Y.2s, without topmark 37 54.50 S 144 53.25 E

Insert special conical light buoy, Fl.Y.2s, without topmark 37 57.61 S 144 57.58 E

Insert special conical light buoy, Fl.Y.2s, without topmark 38 14.46 S 144 59.83 E

132(T)/2008 AUSTRALIA - VICTORIA - Port Phillip - Entrance Deep - Underwater survey work.

Victorian Notice 164(T)/2007 (AA306739)

Diving and Remote Operating Vehicle (ROV) surveys of the Rip Bank will be conducted along the Entrance Deep walls (38 17'.9 S 144 38'.1 E) in way of the entrance channels. The surveys will commence at times of predicted slack water and continue up to one hour thereafter.

All entrance channels will be closed to shipping during certain periods when underwater activities take place in way of the Great Ship Channel.

The Eastern Ship Channel and Outer Eastern Channel will remain open to shipping when underwater activities take place in the Western Ship Channel and/or Outer Western Channel. During the closure periods vessels must not pass or overtake in the Eastern Ship Channel and Outer Eastern Channel.

Details of the planned daily program can be obtained from Point Lonsdale Signal Station.

Vessels intending to use any of the entrance channels should make early contact with Point Lonsdale Signal Station.

Aus143 [NE 27/04/07]

134(T)/2008 AUSTRALIA - VICTORIA - Port Phillip - Sorrento Channel - Light beacon restored.

Former Notice 1013(T)/2006 is cancelled

Victorian Notice 01(T)/2008 (AA306731)

Cancel this notice on receipt

135(T)/2008 AUSTRALIA - VICTORIA - Port Phillip - Daveys Bay - Harbour works completed.

Former Notice 415(T)/2007 is cancelled

Victorian Notice 01(T)/2008 (AA306731)

Cancel this notice on receipt

NOTICES TO MARINERS for Aus144

103* AUSTRALIA - VICTORIA - South Channel to Ricketts Point - Scientific instruments.
Victorian Notice 165/2007 (AA306741)

Aus144 [1066/2007]

Insert special conical light buoy, Fl.Y.2s, without topmark 38 18.60 S 144 42.57 E

132(T)/2008 AUSTRALIA - VICTORIA - Port Phillip - Entrance Deep - Underwater survey work.
Victorian Notice 164(T)/2007 (AA306739)

Diving and Remote Operating Vehicle (ROV) surveys of the Rip Bank will be conducted along the Entrance Deep walls (38 17'.9 S 144 38'.1 E) in way of the entrance channels. The surveys will commence at times of predicted slack water and continue up to one hour thereafter.

All entrance channels will be closed to shipping during certain periods when underwater activities take place in way of the Great Ship Channel.

The Eastern Ship Channel and Outer Eastern Channel will remain open to shipping when underwater activities take place in the Western Ship Channel and/or Outer Western Channel. During the closure periods vessels must not pass or overtake in the Eastern Ship Channel and Outer Eastern Channel.

Details of the planned daily program can be obtained from Point Lonsdale Signal Station.

Vessels intending to use any of the entrance channels should make early contact with Point Lonsdale Signal Station.

Aus144 [NE 14/09/07]

133(T)/2008 AUSTRALIA - VICTORIA - Port Phillip - Sorrento Channel - Beacon re-established.
Former Notice 966(T)/2004 is cancelled
Victorian Notice 01(T)/2008 (AA306731)

Cancel this notice on receipt

134(T)/2008 AUSTRALIA - VICTORIA - Port Phillip - Sorrento Channel - Light beacon restored.
Former Notice 1013(T)/2006 is cancelled
Victorian Notice 01(T)/2008 (AA306731)

Cancel this notice on receipt

NOTICES TO MARINERS for Aus158

103* AUSTRALIA - VICTORIA - South Channel to Ricketts Point - Scientific instruments.
Victorian Notice 165/2007 (AA306741)

Aus158 [53/2008]

Delete depth 17 2 m 38 14.49 S 144 59.76 E

Delete depth 12 2 m 38 18.76 S 144 52.04 E

Delete depth 10 5 m 38 21.10 S 144 46.20 E

Delete depth 9 7 m 38 20.46 S 144 52.30 E

Insert special conical light buoy, Fl.Y.2s, without topmark 38 13.64 S 144 42.55 E

Insert special conical light buoy, Fl.Y.2s, without topmark 38 18.60 S 144 42.57 E

Insert special conical light buoy, Fl.Y.2s, without topmark 38 14.46 S 144 59.83 E

Insert special conical light buoy, Fl.Y.2s, without topmark 38 18.78 S 144 52.12 E

Insert special conical light buoy, Fl.Y.2s, without topmark 38 16.56 S 144 57.63 E

Insert special conical light buoy, Fl.Y.2s, without topmark 38 20.48 S 144 52.32 E

Insert special conical light buoy, Fl.Y.2s, without topmark 38 21.58 S 144 49.25 E

Insert special conical light buoy, Fl.Y.2s, without topmark 38 21.15 S 144 46.17 E

Insert special conical light buoy, Fl.Y.2s, without topmark 38 16.59 S 144 47.79 E

Insert special conical light buoy, Fl.Y.2s, without topmark 38 19.92 S 144 45.76 E

132(T)/2008 AUSTRALIA - VICTORIA - Port Phillip - Entrance Deep - Underwater survey work.

Victorian Notice 164(T)/2007 (AA306739)

Diving and Remote Operating Vehicle (ROV) surveys of the Rip Bank will be conducted along the Entrance Deep walls (38 17'.9 S 144 38'.1 E) in way of the entrance channels. The surveys will commence at times of predicted slack water and continue up to one hour thereafter.

All entrance channels will be closed to shipping during certain periods when underwater activities take place in way of the Great Ship Channel.

The Eastern Ship Channel and Outer Eastern Channel will remain open to shipping when underwater activities take place in the Western Ship Channel and/or Outer Western Channel. During the closure periods vessels must not pass or overtake in the Eastern Ship Channel and Outer Eastern Channel.

Details of the planned daily program can be obtained from Point Lonsdale Signal Station.

Vessels intending to use any of the entrance channels should make early contact with Point Lonsdale Signal Station.

Aus158 [NE 27/04/07]

133(T)/2008 AUSTRALIA - VICTORIA - Port Phillip - Sorrento Channel - Beacon re-established.

Former Notice 966(T)/2004 is cancelled

Victorian Notice 01(T)/2008 (AA306731)

Cancel this notice on receipt

134(T)/2008 AUSTRALIA - VICTORIA - Port Phillip - Sorrento Channel - Light beacon restored.

Former Notice 1013(T)/2006 is cancelled

Victorian Notice 01(T)/2008 (AA306731)

Cancel this notice on receipt

7 February 2008

Notice to Sailors This Weekend Sat 9th and Sun 10th of Feb and Sat and Sun 16th and 17th of Feb – 34781



Speed Boat Championships

Sarah Phillips, Thursday, 7 February 2008

This weekend round 3 and 4 of the 2008 offshore superboat championships is on! this means Port Phillip Bay is host to some very fast speed boats. Please Click for more detail.

Saturday 9th February 2008 from 14.00hrs to 18.00hrs

Sunday 10th February 2008 from 10.00hrs to 15.00hrs

The course will cover an approximate 300 metre wide corridor from an approximate position 200 metres offshore from the end of Bay Street Port Melbourne to an approximate position 300 metres offshore, from the end of Bay Street Brighton.

The race consists of 13 laps at high speeds and marshal vessels will be in place at several locations along the course.

Saturday 16th February 2008 from 14.00hrs to 18.00hrs

Sunday 17th February 2008 from 10.00hrs to 15.00hrs

The course will cover an approximate 100 metre wide corridor from an approximate position 200 metres offshore from Victoria Street, Albert Park to an approximate position 300 metres offshore from Hygeia

Street, North Williamstown, crossing the junction of Port Melbourne and Williamstown Channels approximately to the NW and SE of a line joining Beacon No. 71 and Beacon No. 16 and rounding Gellibrand Shoal beacon southward.

The race consists of 13 laps at high speeds and marshal vessels will be in place at several locations along the course.

Other Links

[Click for Map of Superboat Course area](#)

(Note: The link was removed as the page is no longer available.)

14 February 2008

New Members Leap Year Party Night -34953



New Members Party Night

Jan Fielding, Thursday, 14 February 2008

Friday 29th February 2008, 6.30pm

New Members Leap Year Party Night

17 February 2008

Notices to Mariners Edition 3 - 34984

Wendell Raven, Sunday, 17 February 2008

Please note the following notices to mariners issued by the Australian Hydrographic Service.

More detailed information, along with notices for areas other than Victoria can be found the [Australian Hydrographic Service website](#).

Victorian notices can also be found on the Port of Melbourne and Parks Victoria websites.

(Note: The links were removed as the pages are no longer available.)

Notices for charts:

NOTICES TO MARINERS for Aus140

156* AUSTRALIA - VICTORIA - Portland - Light altered.
Victorian Notice 162/2007 (AA306749)

Aus140 (plan: Portland) [963/2007]
Amend light elevation to 22m 38 20.67 S 141 37.47 E

NOTICES TO MARINERS for Aus143

175(T)/2008 AUSTRALIA - VICTORIA - Port Phillip - Dredging operations.
Victorian Notice 16(T)/2008 (AA311139)
Mariners are advised that the Channel Deepening Project within the waters of Port Phillip has commenced.

Dredging and associated operations will be conducted on a 24 hour basis within the port waters.

Information regarding the location of daily operations and movements within Port Phillip north of latitude 38 05'S and the River Yarra can be obtained from Shipping Management Centre on VHF Ch 12.

Information regarding the location of daily operations and movements within Port Phillip south of latitude 38 05'S can be obtained from Point Lonsdale Signal Station on VHF Ch 12.

Mariners are advised to navigate with caution in the area.

Aus143 [NE 27/04/07]

NOTICES TO MARINERS for Aus144

159* AUSTRALIA - VICTORIA - Port Phillip - Lonsdale Bay - Light buoy.
VIC Notices (AA309672)

Aus144 [103/2008]

Insert special conical light buoy, Fl.Y.2s, without topmark 38 16.49 S 144 39.04 E

175(T)/2008 AUSTRALIA - VICTORIA - Port Phillip - Dredging operations.

Victorian Notice 16(T)/2008 (AA311139)

Mariners are advised that the Channel Deepening Project within the waters of Port Phillip has commenced.

Dredging and associated operations will be conducted on a 24 hour basis within the port waters.

Information regarding the location of daily operations and movements within Port Phillip north of latitude 38 05'S and the River Yarra can be obtained from Shipping Management Centre on VHF Ch 12.

Information regarding the location of daily operations and movements within Port Phillip south of latitude 38 05'S can be obtained from Point Lonsdale Signal Station on VHF Ch 12.

Mariners are advised to navigate with caution in the area.

Aus144 [NE 14/09/07]

NOTICES TO MARINERS for Aus154

175(T)/2008 AUSTRALIA - VICTORIA - Port Phillip - Dredging operations.

Victorian Notice 16(T)/2008 (AA311139)

Mariners are advised that the Channel Deepening Project within the waters of Port Phillip has commenced.

Dredging and associated operations will be conducted on a 24 hour basis within the port waters.

Information regarding the location of daily operations and movements within Port Phillip north of latitude 38 05'S and the River Yarra can be obtained from Shipping Management Centre on VHF Ch 12.

Information regarding the location of daily operations and movements within Port Phillip south of latitude 38 05'S can be obtained from Point Lonsdale Signal Station on VHF Ch 12.

Mariners are advised to navigate with caution in the area.

Aus154 [NE 19/03/99]

NOTICES TO MARINERS for Aus155

175(T)/2008 AUSTRALIA - VICTORIA - Port Phillip - Dredging operations.

Victorian Notice 16(T)/2008 (AA311139)

Mariners are advised that the Channel Deepening Project within the waters of Port Phillip has commenced.

Dredging and associated operations will be conducted on a 24 hour basis within the port waters.

Information regarding the location of daily operations and movements within Port Phillip north of latitude 38 05'S and the River Yarra can be obtained from Shipping Management Centre on VHF Ch 12.

Information regarding the location of daily operations and movements within Port Phillip south of latitude 38 05'S can be obtained from Point Lonsdale Signal Station on VHF Ch 12.

Mariners are advised to navigate with caution in the area.

Aus155 (plan: Sandringham) [NE 27/04/07]

NOTICES TO MARINERS for Aus158

159* AUSTRALIA - VICTORIA - Port Phillip - Lonsdale Bay - Light buoy.
VIC Notices (AA309672)

Aus158 [103/2008]

Insert special conical light buoy, Fl.Y.2s, without topmark 38 16.49 S 144 39.04 E

175(T)/2008 AUSTRALIA - VICTORIA - Port Phillip - Dredging operations.
Victorian Notice 16(T)/2008 (AA311139)

Mariners are advised that the Channel Deepening Project within the waters of Port Phillip has commenced.

Dredging and associated operations will be conducted on a 24 hour basis within the port waters.

Information regarding the location of daily operations and movements within Port Phillip north of latitude 38 05'S and the River Yarra can be obtained from Shipping Management Centre on VHF Ch 12.

Information regarding the location of daily operations and movements within Port Phillip south of latitude 38 05'S can be obtained from Point Lonsdale Signal Station on VHF Ch 12.

Mariners are advised to navigate with caution in the area.

Aus158 [NE 27/04/07]

1 March 2008

Notices to Mariners Edition 4 - 35224

Wendell Raven, Saturday, 1 March 2008

Please note the following notices to mariners issued by the Australian Hydrographic Service.

More detailed information, along with notices for areas other than Victoria can be found the [Australian Hydrographic Service website](#).

Victorian notices can also be found on the Port of Melbourne and Parks Victoria websites.

(Note: The links were removed as the pages are no longer available.)

Notices for charts:

NOTICES TO MARINERS for Aus143

221(T)/2008 AUSTRALIA - VICTORIA - Port Phillip - South Channel to Ricketts Point - Scientific instruments.

Former Notice 1040(T)/2007 is cancelled

Victorian Notice 165/2007 (AA306741)

Cancel this notice on receipt

222(T)/2008 AUSTRALIA - VICTORIA - Port Phillip - Portarlington - Harbour works completed.

Former Notice 1038(T)/2007 is cancelled

Victorian Notice 1(T)/2008 (AA306731)

Cancel this notice on receipt

223(T)/2008 AUSTRALIA - VICTORIA - Port Phillip - Port Melbourne - Princes Pier - Harbour works.

Victorian Notice 12(T)/2008 (AA313545)

Harbour works associated with the redevelopment of Princes Pier (37 50'.70S 144 55'.54 E) are in progress.

Mariners are advised to navigate with caution in the area.

Aus143 [NE 27/04/07]

224(T)/2008 AUSTRALIA - VICTORIA - Port Phillip - St Kilda - Harbour works completed.

Former Notice 1147(T)/2007 is cancelled

Victorian Notice 1(T)/2008 (AA306731)

Cancel this notice on receipt

NOTICES TO MARINERS for Aus144

221(T)/2008 AUSTRALIA - VICTORIA - Port Phillip - South Channel to Ricketts Point - Scientific instruments.

Former Notice 1040(T)/2007 is cancelled

Victorian Notice 165/2007 (AA306741)

Cancel this notice on receipt

NOTICES TO MARINERS for Aus154

221(T)/2008 AUSTRALIA - VICTORIA - Port Phillip - South Channel to Ricketts Point - Scientific instruments.

Former Notice 1040(T)/2007 is cancelled
Victorian Notice 165/2007 (AA306741)

Cancel this notice on receipt

223(T)/2008 AUSTRALIA - VICTORIA - Port Phillip - Port Melbourne - Princes Pier - Harbour works.
Victorian Notice 12(T)/2008 (AA313545)

Harbour works associated with the redevelopment of Princes Pier (37 50'.70S 144 55'.54 E) are in progress.

Mariners are advised to navigate with caution in the area.

Aus154 [NE 15/02/08]

NOTICES TO MARINERS for Aus155

224(T)/2008 AUSTRALIA - VICTORIA - Port Phillip - St Kilda - Harbour works completed.

Former Notice 1147(T)/2007 is cancelled
Victorian Notice 1(T)/2008 (AA306731)

Cancel this notice on receipt

NOTICES TO MARINERS for Aus158

221(T)/2008 AUSTRALIA - VICTORIA - Port Phillip - South Channel to Ricketts Point - Scientific instruments.

Former Notice 1040(T)/2007 is cancelled
Victorian Notice 165/2007 (AA306741)

Cancel this notice on receipt

14 March 2008

Notices to Mariners Edition 5 - 35402

Wendell Raven, Friday, 14 March 2008

Please note the following notices to mariners issued by the Australian Hydrographic Service.

More detailed information, along with notices for areas other than Victoria can be found the [Australian Hydrographic Service website](#).

Victorian notices can also be found on the Port of Melbourne and Parks Victoria websites.

(Note: The links were removed as the pages are no longer available.)

Notices for charts:

NOTICES TO MARINERS for Aus140

271(T)/2008 AUSTRALIA - VICTORIA - Cape Nelson - Light buoy established southwards.

Victorian Notice 160(T)/2007 (AA306750)

A special spar light buoy exists in position 38 29'.5 S 141 33'.6 E.

Aus140 [NC 30/03/01]

11 April 2008

Notices to Mariners Edition 7 - 35818

Wendell Raven, Friday, 11 April 2008

Note - there were no notices in Edition 6 for Victorian charts.

Please note the following notices to mariners issued by the Australian Hydrographic Service.

More detailed information, along with notices for areas other than Victoria can be found the [Australian Hydrographic Service website](#).

Victorian notices can also be found on the Port of Melbourne and Parks Victoria websites.

(Note: The links were removed as the pages are no longer available.)

Notices for charts:

NOTICES TO MARINERS for Aus143

361(T)/2008 AUSTRALIA - VICTORIA - Port Phillip - Ricketts Point - Beacon destroyed.

Victorian Notice 43(T)/2008 (AA323675)

Beacon (37 59'.71 S 145 01'.84 E) has been destroyed.

Aus143 [NE 27/04/07]

27 April 2008

Notices to Mariners Edition 8 - 36017

Wendell Raven, Sunday, 27 April 2008

Please note the following notices to mariners issued by the Australian Hydrographic Service.

More detailed information, along with notices for areas other than Victoria can be found the [Australian Hydrographic Service website](#).

Victorian notices can also be found on the Port of Melbourne and Parks Victoria websites.

(Note: The links were removed as the pages are no longer available.)

NOTICES TO MARINERS for Aus140

380* AUSTRALIA - VICTORIA - Cape Nelson - Fish aggregating device southwards.
Association of Geelong And District Angling Clubs (AA324326, AA324844)

Aus140 [156/2008]

Insert special conical light buoy, Fl.Y.3s (Nov - Jul), with topmark 38 29.46 S 141 33.66 E

NOTICES TO MARINERS for Aus143

383* AUSTRALIA - VICTORIA - Barwon Heads - Fish aggregation device southwestwards.
Association of Geelong and District Angling Clubs (AA324326, AA324844)

Aus143 [103/2008]

Insert special conical light buoy, Fl.Y.3s (Nov - Jul), with topmark 38 22.20 S 144 26.40 E

385* AUSTRALIA - VICTORIA - Port Phillip - Spoil ground.
Victorian Notice 54/2008 (AA325323)

Aus143 [383/2008]

Delete dashed line, between 38 01.35 S 144 51.59 E

38 01.35 S 144 53.46 E

Insert dashed line, between 38 01.35 S 144 51.59 E

38 02.39 S 144 50.96 E

38 02.40 S 144 53.18 E

38 01.35 S 144 53.46 E

419(T)/2008 AUSTRALIA - VICTORIA - Port Phillip - Dredging operations.

Former Notice 175(T)/2008 is cancelled

Victorian Notice 37(T)/2008, 56(T)/2008 (AA324225, AA325795) The dredge Queen of the Netherlands is conducting dredging operations within the entrance channels to Port Phillip Bay.

During the dredging operations the effective maintained depth of the Great Ship Channel will be 13 metres. The maximum permissible static draught of a vessel transiting the channel will be 10.6 metres at all tides; and maximum 11.6 metres with 1 metre of tidal assistance, subject to a minimum static under keel clearance of 2.4 metres, during the entire transit over Rip Bank and Nepean Bank.

Dredging will not impede the passage of commercial shipping. Vessels intending to use the Great Ship Channel must advise the Point Lonsdale Signal Station who will provide the dredge at least 30 minutes notice for the dredger to clear the channel. Dive vessel operators must also contact Point Lonsdale Signal Station on VHF Ch 12 or (03) 52581252 to obtain information on the movements of the dredger and commercial vessels prior to engaging in diving activities.

Aus143 [NE 27/04/07]

420(T)/2008 AUSTRALIA - VICTORIA - Port Phillip - Restricted areas.

Victorian Notice 55(T)/2008 (AA326107)

A restricted access area has been declared around the dredge vessels and the barge during their operation or presence in the Yarra River and Port Phillip as follows:

In the Yarra River an area comprising the port of Melbourne waters and any part of port of Melbourne land that is within 50 metres radius of the dredges Queen of the Netherlands or Cornelis Zanen, when either vessel is in the Yarra River, in the waters of the port of Melbourne, north of an imaginary line connecting 38 51'.17 S 144 54'.48 E and 38 50'.97 S 144 54'.75 E.

In Port Phillip around the dredge vessels an area comprising the port of Melbourne waters and any part of port of Melbourne land that is within 200 metres radius of the dredges Queen of the Netherlands or Cornelis Zanen, when either vessel is in the waters of the port of Melbourne south of an imaginary line connecting 38 51'.17 S 144 54'.48 E and 38 50'.97 S 144 54'.75 E, being an area within Port Phillip (including Hobsons Bay) or at the Entrance (including the waters of Bass Strait).

In Port Phillip around the POMBAA Barge an area comprising the Port Melbourne waters that is within 750 metres radius of the barge and any replacement or additional barge used or intended for the transfer of dredged materials from a dredge vessel to the Port of Melbourne Dredged Material Ground.

Further details regarding the operations can be obtained from the Port of Melbourne Corporation's Channel Deepening website www.channelproject.com or on telephone 1-800 731 022.

(Note: The link was removed as the page is no longer available.)

Mariners are advised to navigate with caution in the area.

Aus143 [NE 27/04/07]

421(T)/2008 AUSTRALIA - VICTORIA - Port Phillip - Altona Bay - Shoaling.

Former Notice 794(T)/2007 is cancelled

Victorian Notice 51(T)/2008 (AA324196)

Depths less than -0.5 m may exist in the vicinity of 37 52'.01 S 144 50'.96 E (WGS84 datum).

Mariners are advised to navigate with caution in the area.

Aus143 [NE 27/04/07]

424(T)/2008 AUSTRALIA - VICTORIA - Port Phillip - Mordialloc - Shoaling.
Victorian Notice 38(T)/2008 (AA324227)
Depths less than -0.5 m may exist in the vicinity of 38 00'.65 S 145 05'.07 E (WGS84 datum).
Mariners are advised to navigate with caution in the area.

Aus143 [NE 27/04/07]

NOTICES TO MARINERS for Aus144

384* AUSTRALIA - VICTORIA - Port Phillip - Point Nepean to Weeroona Bay - Buoys.
Victorian Notice 49/2008 (AA323672)

Aus144 [159/2008]

Delete depth 3 2 m 38 18.19 S 144 39.60 E
Delete depth 12 4 m 38 18.68 S 144 42.60 E
Delete depth 17 4 m 38 18.74 S 144 42.88 E
Insert special conical buoy, without topmark 38 18.67 S 144 42.55 E
Insert special conical buoy, without topmark 38 18.81 S 144 42.75 E
Insert special conical buoy, without topmark 38 18.72 S 144 42.86 E
Insert special conical buoy, without topmark 38 18.57 S 144 42.68 E
Insert special conical buoy, without topmark 38 18.23 S 144 39.57 E
Insert special conical buoy, without topmark 38 17.94 S 144 39.14 E

419(T)/2008 AUSTRALIA - VICTORIA - Port Phillip - Dredging operations.
Former Notice 175(T)/2008 is cancelled
Victorian Notice 37(T)/2008, 56(T)/2008 (AA324225, AA325795) The dredge Queen of the Netherlands is conducting dredging operations within the entrance channels to Port Phillip Bay.

During the dredging operations the effective maintained depth of the Great Ship Channel will be 13 metres. The maximum permissible static draught of a vessel transiting the channel will be 10.6 metres at all tides; and maximum 11.6 metres with 1 metre of tidal assistance, subject to a minimum static under keel clearance of 2.4 metres, during the entire transit over Rip Bank and Nepean Bank.

Dredging will not impede the passage of commercial shipping. Vessels intending to use the Great Ship Channel must advise the Point Lonsdale Signal Station who will provide the dredge at least 30 minutes notice for the dredger to clear the channel. Dive vessel operators must also contact Point Lonsdale Signal Station on VHF Ch 12 or (03) 52581252 to obtain information on the movements of the dredger and commercial vessels prior to engaging in diving activities.

Aus144 [NE 14/09/07]

420(T)/2008 AUSTRALIA - VICTORIA - Port Phillip - Restricted areas.
Victorian Notice 55(T)/2008 (AA326107)

A restricted access area has been declared around the dredge vessels and the barge during their operation or presence in the Yarra River and Port Phillip as follows:

In the Yarra River an area comprising the port of Melbourne waters and any part of port of Melbourne land that is within 50 metres radius of the dredges Queen of the Netherlands or Cornelis Zanen , when either vessel is in the Yarra River, in the waters of the port of Melbourne, north of an imaginary line connecting 38 51'.17 S 144 54'.48 E and 38 50'.97 S 144 54'.75 E.

In Port Phillip around the dredge vessels an area comprising the port of Melbourne waters and any part of port of Melbourne land that is within 200 metres radius of the dredges Queen of the Netherlands or Cornelis Zanen , when either vessel is in the waters of the port of Melbourne south of an imaginary line connecting 38 51'.17 S 144 54'.48 E and 38 50'.97 S 144 54'.75 E, being an area within Port Phillip (including Hobsons Bay) or at the Entrance (including the waters of Bass Strait).

In Port Phillip around the POMBAA Barge an area comprising the Port Melbourne waters that is within 750 metres radius of the barge and any replacement or additional barge used or intended for the transfer of dredged materials from a dredge vessel to the Port of Melbourne Dredged Material Ground.

Further details regarding the operations can be obtained from the Port of Melbourne Corporation's Channel Deepening website www.channelproject.com or on telephone 1-800 731 022.

(Note: The link was removed as the page is no longer available.)

Mariners are advised to navigate with caution in the area.

Aus144 [NE 14/09/07]

NOTICES TO MARINERS for Aus150

387* AUSTRALIA - VICTORIA - Western Port - Woody Point - Obstruction; light beacon.
Former Notice 547(T)/2007 is cancelled
Victorian Notice 44/2008 (AA324194)

Aus150 (plan: The Narrows) [1126/2007]
Delete depth 0 9 m 38 31.02 S 145 21.90 E
Insert isolated danger light beacon, Fl(2)5s Turbine, enclosed by danger circle 38 31.00 S 145 21.88 E

NOTICES TO MARINERS for Aus154

419(T)/2008 AUSTRALIA - VICTORIA - Port Phillip - Dredging operations.
Former Notice 175(T)/2008 is cancelled
Victorian Notice 37(T)/2008, 56(T)/2008 (AA324225, AA325795) The dredge Queen of the Netherlands is conducting dredging operations within the entrance channels to Port Phillip Bay.

During the dredging operations the effective maintained depth of the Great Ship Channel will be 13 metres. The maximum permissible static draught of a vessel transiting the channel will be 10.6 metres at all tides; and maximum 11.6 metres with 1 metre of tidal assistance, subject to a minimum static under keel clearance of 2.4 metres, during the entire transit over Rip Bank and Nepean Bank.

Dredging will not impede the passage of commercial shipping. Vessels intending to use the Great Ship Channel must advise the Point Lonsdale Signal Station who will provide the dredge at least 30 minutes notice for the dredger to clear the channel. Dive vessel operators must also contact Point Lonsdale Signal Station on VHF Ch 12 or (03) 52581252 to obtain information on the movements of the dredger and commercial vessels prior to engaging in diving activities.

Aus154 [NE 15/02/08]

420(T)/2008 AUSTRALIA - VICTORIA - Port Phillip - Restricted areas.

Victorian Notice 55(T)/2008 (AA326107)

A restricted access area has been declared around the dredge vessels and the barge during their operation or presence in the Yarra River and Port Phillip as follows:

In the Yarra River an area comprising the port of Melbourne waters and any part of port of Melbourne land that is within 50 metres radius of the dredges Queen of the Netherlands or Cornelis Zanen, when either vessel is in the Yarra River, in the waters of the port of Melbourne, north of an imaginary line connecting 38 51'.17 S 144 54'.48 E and 38 50'.97 S 144 54'.75 E.

In Port Phillip around the dredge vessels an area comprising the port of Melbourne waters and any part of port of Melbourne land that is within 200 metres radius of the dredges Queen of the Netherlands or Cornelis Zanen, when either vessel is in the waters of the port of Melbourne south of an imaginary line connecting 38 51'.17 S 144 54'.48 E and 38 50'.97 S 144 54'.75 E, being an area within Port Phillip (including Hobsons Bay) or at the Entrance (including the waters of Bass Strait).

In Port Phillip around the POMBAA Barge an area comprising the Port Melbourne waters that is within 750 metres radius of the barge and any replacement or additional barge used or intended for the transfer of dredged materials from a dredge vessel to the Port of Melbourne Dredged Material Ground.

Further details regarding the operations can be obtained from the Port of Melbourne Corporation's Channel Deepening website www.channelproject.com or on telephone 1-800 731 022.

(Note: The link was removed as the page is no longer available.)

Mariners are advised to navigate with caution in the area.

Aus154 [NE 15/02/08]

422(T)/2008 AUSTRALIA - VICTORIA - Port Phillip - Port Melbourne - River Yarra - Harbour works.

Victorian Notice 34(T)/2007 (AA324217)

Harbour works to repair the piles at Appleton Dock C (37 49'.07 S 144 55'.19 E) are in progress.

The works will be conducted from the work barge No 176 and will involve diving operations. The barge can be contacted on 0417350147 and for more information regarding the works contact Harbour Control on 03 9644 9700 or VHF Ch 12.

Aus154 [NE 15/02/08]

NOTICES TO MARINERS for Aus155

419(T)/2008 AUSTRALIA - VICTORIA - Port Phillip - Dredging operations.

Former Notice 175(T)/2008 is cancelled

Victorian Notice 37(T)/2008, 56(T)/2008 (AA324225, AA325795) The dredge Queen of the Netherlands is conducting dredging operations within the entrance channels to Port Phillip Bay.

During the dredging operations the effective maintained depth of the Great Ship Channel will be 13 metres. The maximum permissible static draught of a vessel transiting the channel will be 10.6 metres at all tides; and maximum 11.6 metres with 1 metre of tidal assistance, subject to a minimum static under keel clearance of 2.4 metres, during the entire transit over Rip Bank and Nepean Bank.

Dredging will not impede the passage of commercial shipping. Vessels intending to use the Great Ship Channel must advise the Point Lonsdale Signal Station who will provide the dredge at least 30 minutes notice for the dredger to clear the channel. Dive vessel operators must also contact Point Lonsdale Signal Station on VHF Ch 12 or (03) 52581252 to obtain information on the movements of the dredger and commercial vessels prior to engaging in diving activities.

NOTICES TO MARINERS for Aus158

384* AUSTRALIA - VICTORIA - Port Phillip - Point Nepean to Weeroona Bay - Buoys.

Victorian Notice 49/2008 (AA323672)

Aus158 [159/2008]

Delete depth 7 9 m 38 18.77 S 144 42.71 E

Delete depth 17 4 m 38 18.74 S 144 42.88 E

Insert special conical buoy, without topmark 38 18.81 S 144 42.75 E

Insert special conical buoy, without topmark 38 18.72 S 144 42.86 E

Insert special conical buoy, without topmark 38 18.23 S 144 39.57 E

Insert special conical buoy, without topmark 38 17.94 S 144 39.14 E

386* AUSTRALIA - VICTORIA - Port Phillip - Martha Point - Light buoys.

Parks Victoria, Dept of Primary Industries (AA313513)

Aus158 [384/2008]

Insert special pillar light buoy, Q(4)Y.12s, with topmark 38 18.43 S 144 58.63 E

Insert special pillar light buoy, Q(4)Y.12s, with topmark 38 18.43 S 144 58.32 E

Insert special pillar light buoy, Q(4)Y.12s, with topmark 38 18.19 S 144 58.63 E

Insert special pillar light buoy, Q(4)Y.12s, with topmark 38 18.19 S 144 58.33 E

419(T)/2008 AUSTRALIA - VICTORIA - Port Phillip - Dredging operations.

Former Notice 175(T)/2008 is cancelled

Victorian Notice 37(T)/2008, 56(T)/2008 (AA324225, AA325795) The dredge Queen of the Netherlands is conducting dredging operations within the entrance channels to Port Phillip Bay.

During the dredging operations the effective maintained depth of the Great Ship Channel will be 13 metres. The maximum permissible static draught of a vessel transiting the channel will be 10.6 metres at all tides; and maximum 11.6 metres with 1 metre of tidal assistance, subject to a minimum static under keel clearance of 2.4 metres, during the entire transit over Rip Bank and Nepean Bank.

Dredging will not impede the passage of commercial shipping. Vessels intending to use the Great Ship Channel must advise the Point Lonsdale Signal Station who will provide the dredge at least 30 minutes notice for the dredger to clear the channel. Dive vessel operators must also contact Point Lonsdale Signal Station on VHF Ch 12 or (03) 52581252 to obtain information on the movements of the dredger and commercial vessels prior to engaging in diving activities.

Aus158 [NE 27/04/07]

420(T)/2008 AUSTRALIA - VICTORIA - Port Phillip - Restricted areas.

Victorian Notice 55(T)/2008 (AA326107)

A restricted access area has been declared around the dredge vessels and the barge during their operation or presence in the Yarra River and Port Phillip as follows:

In the Yarra River an area comprising the port of Melbourne waters and any part of port of Melbourne land that is within 50 metres radius of the dredges Queen of the Netherlands or Cornelis Zanen, when either vessel is in the Yarra River, in the waters of the port of Melbourne, north of an imaginary line connecting 38 51'.17 S 144 54'.48 E and 38 50'.97 S 144 54'.75 E.

In Port Phillip around the dredge vessels an area comprising the port of Melbourne waters and any part of port of Melbourne land that is within 200 metres radius of the dredges Queen of the Netherlands or Cornelis Zanen, when either vessel is in the waters of the port of Melbourne south of an imaginary line connecting 38 51'.17 S 144 54'.48 E and 38 50'.97 S 144 54'.75 E, being an area within Port Phillip (including Hobsons Bay) or at the Entrance (including the waters of Bass Strait).

In Port Phillip around the POMBAA Barge an area comprising the Port Melbourne waters that is within 750 metres radius of the barge and any replacement or additional barge used or intended for the transfer of dredged materials from a dredge vessel to the Port of Melbourne Dredged Material Ground.

Further details regarding the operations can be obtained from the Port of Melbourne Corporation's Channel Deepening website www.channelproject.com or on telephone 1-800 731 022.

(Note: The link was removed as the page is no longer available.)

Mariners are advised to navigate with caution in the area.

Aus158 [NE 27/04/07]

8 May 2008

Notices to Mariners Edition 9 - 36192

Wendell Raven, Thursday, 8 May 2008

Please note the following notices to mariners issued by the Australian Hydrographic Service.

More detailed information, along with notices for areas other than Victoria can be found the [Australian Hydrographic Service website](#).

Victorian notices can also be found on the Port of Melbourne and Parks Victoria websites.

(Note: The links were removed as the pages are no longer available.)

Notices for charts:

NOTICES TO MARINERS for Aus143

443* AUSTRALIA - VICTORIA - Port Phillip - Nav aids.
Parks Victoria, Department of Primary Industries (AA313513)

Aus143 [385/2008]

Delete light beacon 38 06.10 S 144 40.60 E
Delete light beacon 38 06.10 S 144 42.10 E
Delete light beacon 38 06.60 S 144 40.70 E
Delete light beacon 38 06.60 S 144 42.20 E
Amend light to Q(4)Y.10s 38 03.00 S 144 39.30 E
Amend light to Q(4)Y.12s 38 15.00 S 144 49.20 E
Amend light to Q(4)Y.12s 38 14.30 S 144 48.90 E
Amend light to Q(4)Y.12s 38 13.90 S 144 50.00 E
Amend light to Q(4)Y.12s 38 14.60 S 144 50.30 E
Amend light to Q(4)Y.10s 38 03.60 S 144 39.30 E
Amend light to Q(4)Y.10s 38 03.50 S 144 38.00 E
Insert special light beacon, Q(4)Y.12s, with topmark 38 06.03 S 144 42.19 E
Insert special light beacon, Q(4)Y.12s, with topmark 38 06.64 S 144 42.18 E
Insert special light beacon, Q(4)Y.12s, with topmark 38 06.00 S 144 40.69 E
Insert special light beacon, Q(4)Y.12s, with topmark 38 06.62 S 144 40.67 E

444* AUSTRALIA - VICTORIA - Port Phillip - Scientific instruments.
Victorian Notice 57/2008 (AA329572)

Aus143 [443/2008]

Delete depth 3 4 m 38 02.70 S 144 33.00 E
Insert special conical light buoy, Fl.Y.2s, without topmark 38 02.65 S 144 33.07 E

NOTICES TO MARINERS for Aus150

445* AUSTRALIA - VICTORIA - Western Port - Flinders Bight - Light beacons; marine farm.
Parks Victoria, Department of Primary Industries (AA313513)

Aus150 [387/2008]

Delete dashed line, between 38 26.57 S 145 03.61 E
38 26.41 S 145 03.40 E

38 28.13 S 145 02.12 E

38 28.30 S 145 02.59 E

Insert dashed line, between 38 26.57 S 145 03.61 E

38 27.12 S 145 02.85 E

38 28.04 S 145 02.13 E

38 28.30 S 145 02.59 E

Delete light beacon 38 28.31 S 145 02.59 E

Delete light beacon 38 27.77 S 145 03.51 E

Delete light beacon 38 27.23 S 145 04.44 E

Delete light beacon 38 28.13 S 145 02.12 E

Delete light beacon 38 26.40 S 145 03.42 E

Amend light to Q(4)Y.12s 38 27.12 S 145 02.85 E

Insert special light beacon, Q(4)Y.12s, with topmark 38 28.04 S 145 02.13 E

Insert special light beacon, Q(4)Y.12s, with topmark 38 26.57 S 145 03.61 E

NOTICES TO MARINERS for Aus151

445* AUSTRALIA - VICTORIA - Western Port - Flinders Bight - Light beacons; marine farm.
Parks Victoria, Department of Primary Industries (AA313513)

Aus151 [609/2007]

Delete dashed line, between 38 26.57 S 145 03.61 E

38 26.41 S 145 03.40 E

38 28.13 S 145 02.12 E

38 28.30 S 145 02.59 E

Insert dashed line, between 38 26.57 S 145 03.61 E

38 27.12 S 145 02.85 E

38 28.04 S 145 02.13 E

38 28.30 S 145 02.59 E

Delete light beacon 38 28.31 S 145 02.59 E

Delete light beacon 38 27.77 S 145 03.51 E

Delete light beacon 38 27.23 S 145 04.44 E

Delete light beacon 38 28.13 S 145 02.12 E

Delete light beacon 38 26.40 S 145 03.42 E

Amend light to Q(4)Y.12s 3M 38 27.12 S 145 02.85 E

Insert special light beacon, Q(4)Y.12s 3M, with topmark 38 28.04 S 145 02.13 E
Insert special light beacon, Q(4)Y.12s 3M, with topmark 38 26.57 S 145 03.61 E

NOTICES TO MARINERS for Aus154

475(T)/2008 AUSTRALIA - VICTORIA - Port Phillip - Port Melbourne - Dredging operations.
Victorian Notice 61(T)/2008 (AA330035)

The dredge Goomai, tugs Edina or Tanunda and barges Endeavour and Resolution are conducting dredging operations in the Williamstown Channel and River Yarra.

Commercial vessels transiting the operations must advise Shipping Management Centre to provide the dredger 30 minutes notice to clear the area. All vessels involved in the operations can be contacted on VHF Ch 12.

Mariners are advised to navigate with caution in the area.

Aus154 [NE 15/02/08]

NOTICES TO MARINERS for Aus158

443* AUSTRALIA - VICTORIA - Port Phillip - Nav aids.
Parks Victoria, Department of Primary Industries (AA313513)

Aus158 [386/2008]

Move east cardinal light buoy 38 13.91 S 144 50.44 E

To 38 13.91 S 144 50.61 E

Amend light to Q(4)Y.12s 38 14.26 S 144 48.86 E

Amend light to Q(4)Y.12s 38 14.98 S 144 49.22 E

Amend light to Q(4)Y.12s 38 14.63 S 144 50.34 E

Amend light to Q(4)Y.12s 38 13.91 S 144 49.98 E

Amend light to Q(4)Y.6s 38 14.42 S 145 01.05 E

Amend light to Q(4)Y.6s 38 14.40 S 144 59.90 E

Amend light to Q(4)Y.6s 38 13.93 S 145 01.06 E

Amend light to Q(4)Y.6s 38 13.91 S 144 59.92 E

23 May 2008

Notices to Mariners Edition 10 - 36373

Wendell Raven, Friday, 23 May 2008

Please note the following notices to mariners issued by the Australian Hydrographic Service.

More detailed information, along with notices for areas other than Victoria can be found the [Australian Hydrographic Service website](#).

Victorian notices can also be found on the Port of Melbourne and Parks Victoria websites.

(Note: The links were removed as the pages are no longer available.)

Notices for charts:

NOTICES TO MARINERS for Aus143

496* AUSTRALIA - VICTORIA - Port Phillip - Nav aids.
Department of Primary Industries (AA331341)

Aus143 [444/2008]

Substitute special pillar light buoy, Q(4)Y.10s, with topmark for light buoy 38 03.00 S 144 39.30 E
Substitute special pillar light buoy, Q(4)Y.10s, with topmark for light buoy 38 03.60 S 144 39.30 E
Substitute special pillar light buoy, Q(4)Y.10s, with topmark for light buoy 38 03.50 S 144 38.00 E
Delete special light buoy 38 16.50 S 144 50.70 E

510(T)/2008 AUSTRALIA - VICTORIA - Port Phillip - Dredging operations.

Former Notice 419(T)/2008 is cancelled

Victorian Notice 68(T)/2008, 56(T)/2008 (AA332640, AA325795) The dredge Queen of the Netherlands is conducting dredging operations within the entrance channels to Port Phillip.

During the dredging operations the effective maintained depth of the Great Ship Channel will be 14 metres. The maximum permissible static draught of a vessel transiting the channel will be 11.6 metres at all tides; and maximum 12.1 metres with tidal assistance, subject to a minimum static under keel clearance of 2.4 metres, during the entire transit over Rip Bank and Nepean Bank.

Dredging will not impede the passage of commercial shipping. Vessels intending to use the Great Ship Channel must advise the Point Lonsdale Signal Station who will provide the dredge at least 30 minutes notice for the dredger to clear the channel. Dive vessel operators must also contact Point Lonsdale Signal Station on VHF Ch 12 or (03) 52581252 to obtain information on the movements of the dredger and commercial vessels prior to engaging in diving activities.

Aus143 [NE 27/04/07]

511(T)/2008 AUSTRALIA - VICTORIA - Port Phillip - Restricted areas.

Former Notice 420(T)/2008 is cancelled

Victorian Notice 55(T)/2008 (AA326107)

A restricted access area has been declared around the dredge vessels and the barge during their operation or presence in the Yarra River and Port Phillip as follows:

In the Yarra River an area comprising the port of Melbourne waters and any part of port of Melbourne land that is within 50 metres radius of the dredges Queen of the Netherlands or Cornelis Zanen, when

either vessel is in the Yarra River, in the waters of the port of Melbourne, north of an imaginary line connecting 37 51'.17 S 144 54'.48 E and 37 50'.97 S 144 54'.75 E.

In Port Phillip around the dredge vessels an area comprising the port of Melbourne waters and any part of port of Melbourne land that is within 200 metres radius of the dredges Queen of the Netherlands or Cornelis Zanen , when either vessel is in the waters of the port of Melbourne south of an imaginary line connecting 37 51'.17 S 144 54'.48 E and 37 50'.97 S 144 54'.75 E, being an area within Port Phillip (including Hobsons Bay) or at the Entrance (including the waters of Bass Strait).

In Port Phillip around the POMBAA Barge an area comprising the Port Melbourne waters that is within 750 metres radius of the barge and any replacement or additional barge used or intended for the transfer of dredged materials from a dredge vessel to the Port of Melbourne Dredged Material Ground.

Further details regarding the operations can be obtained from the Port of Melbourne Corporation's Channel Deepening website www.channelproject.com or on telephone 1-800 731 022.

(Note: The link was removed as the page is no longer available.)

Mariners are advised to navigate with caution in the area.

Aus143 [NE 27/04/07]

NOTICES TO MARINERS for Aus144

510(T)/2008 AUSTRALIA - VICTORIA - Port Phillip - Dredging operations.

Former Notice 419(T)/2008 is cancelled

Victorian Notice 68(T)/2008, 56(T)/2008 (AA332640, AA325795) The dredge Queen of the Netherlands is conducting dredging operations within the entrance channels to Port Phillip.

During the dredging operations the effective maintained depth of the Great Ship Channel will be 14 metres. The maximum permissible static draught of a vessel transiting the channel will be 11.6 metres at all tides; and maximum 12.1 metres with tidal assistance, subject to a minimum static under keel clearance of 2.4 metres , during the entire transit over Rip Bank and Nepean Bank.

Dredging will not impede the passage of commercial shipping. Vessels intending to use the Great Ship Channel must advise the Point Lonsdale Signal Station who will provide the dredge at least 30 minutes notice for the dredger to clear the channel. Dive vessel operators must also contact Point Lonsdale Signal Station on VHF Ch 12 or (03) 52581252 to obtain information on the movements of the dredger and commercial vessels prior to engaging in diving activities.

Aus144 [NE 14/09/07]

511(T)/2008 AUSTRALIA - VICTORIA - Port Phillip - Restricted areas.

Former Notice 420(T)/2008 is cancelled

Victorian Notice 55(T)/2008 (AA326107)

A restricted access area has been declared around the dredge vessels and the barge during their operation or presence in the Yarra River and Port Phillip as follows:

In the Yarra River an area comprising the port of Melbourne waters and any part of port of Melbourne land that is within 50 metres radius of the dredges Queen of the Netherlands or Cornelis Zanen , when either vessel is in the Yarra River, in the waters of the port of Melbourne, north of an imaginary line connecting 37 51'.17 S 144 54'.48 E and 37 50'.97 S 144 54'.75 E.

In Port Phillip around the dredge vessels an area comprising the port of Melbourne waters and any part of port of Melbourne land that is within 200 metres radius of the dredges Queen of the Netherlands or Cornelis Zanen , when either vessel is in the waters of the port of Melbourne south of an imaginary line connecting 37 51'.17 S 144 54'.48 E and 37 50'.97 S 144 54'.75 E, being an area within Port Phillip (including Hobsons Bay) or at the Entrance (including the waters of Bass Strait).

In Port Phillip around the POMBAA Barge an area comprising the Port Melbourne waters that is within 750 metres radius of the barge and any replacement or additional barge used or intended for the transfer of dredged materials from a dredge vessel to the Port of Melbourne Dredged Material Ground.

Further details regarding the operations can be obtained from the Port of Melbourne Corporation's Channel Deepening website www.channelproject.com or on telephone 1-800 731 022.

(Note: The link was removed as the page is no longer available.)

Mariners are advised to navigate with caution in the area.

Aus144 [NE 14/09/07]

NOTICES TO MARINERS for Aus150

514(T)/2008 AUSTRALIA - VICTORIA - Western Port - Phillip Island - Shoaling northwards.
Victorian Notice 64(T)/2008 (AA333884)
Shoaling, least depth 13.4 metres, exists at position 38 25'.53 S 145 13'.90 E extending 100 metres into the shipping channel .

Mariners are advised to navigate with caution in the area.

Aus150 [NC 22/03/95]

NOTICES TO MARINERS for Aus151

514(T)/2008 AUSTRALIA - VICTORIA - Western Port - Phillip Island - Shoaling northwards.
Victorian Notice 64(T)/2008 (AA333884)
Shoaling, least depth 13.4 metres, exists at position 38 25'.53 S 145 13'.90 E extending 100 metres into the shipping channel .

Mariners are advised to navigate with caution in the area.

Aus151 [NC 25/02/94]

NOTICES TO MARINERS for Aus154

497* AUSTRALIA - VICTORIA - Port Melbourne - Lights; coastline; legends; dredged area.
UKHO (AA333202, AAA333203)

Aus154 [NE 15/02/08]

Insert legend, Obstn, centred on 37 51.71 S 144 54.96 E

Delete dashed line, between 37 52.10 S 144 55.55 E

37 52.32 S 144 55.54 E

Amend light to 2F.R (vert) 37 49.11 S 144 55.00 E

Amend light to 2F.R (vert) 37 49.06 S 144 55.12 E

Amend light to 3F.G (vert) 37 48.56 S 144 54.83 E

Amend light to 3F.G (vert) 37 48.47 S 144 54.83 E

Amend legend to CHIMNEY 37 50.48 S 144 53.75 E

Insert continuous line, between 37 51.72 S 144 54.37 E

37 51.73 S 144 54.36 E

37 51.74 S 144 54.36 E

37 51.72 S 144 54.38 E

Amend structure colour to YBY 37 49.16 S 144 55.90 E

511(T)/2008 AUSTRALIA - VICTORIA - Port Phillip - Restricted areas.

Former Notice 420(T)/2008 is cancelled

Victorian Notice 55(T)/2008 (AA326107)

A restricted access area has been declared around the dredge vessels and the barge during their operation or presence in the Yarra River and Port Phillip as follows:

In the Yarra River an area comprising the port of Melbourne waters and any part of port of Melbourne land that is within 50 metres radius of the dredges Queen of the Netherlands or Cornelis Zanen , when either vessel is in the Yarra River, in the waters of the port of Melbourne, north of an imaginary line connecting 37 51'.17 S 144 54'.48 E and 37 50'.97 S 144 54'.75 E.

In Port Phillip around the dredge vessels an area comprising the port of Melbourne waters and any part of port of Melbourne land that is within 200 metres radius of the dredges Queen of the Netherlands or Cornelis Zanen , when either vessel is in the waters of the port of Melbourne south of an imaginary line connecting 37 51'.17 S 144 54'.48 E and 37 50'.97 S 144 54'.75 E, being an area within Port Phillip (including Hobsons Bay) or at the Entrance (including the waters of Bass Strait).

In Port Phillip around the POMBAA Barge an area comprising the Port Melbourne waters that is within 750 metres radius of the barge and any replacement or additional barge used or intended for the transfer of dredged materials from a dredge vessel to the Port of Melbourne Dredged Material Ground.

Further details regarding the operations can be obtained from the Port of Melbourne Corporation's Channel Deepening website www.channelproject.com or on telephone 1-800 731 022.

(Note: The link was removed as the page is no longer available.)

Mariners are advised to navigate with caution in the area.

Aus154 [NE 15/02/08]

513(T)/2008 AUSTRALIA - VICTORIA - Port Phillip - Port Melbourne - River Yarra - Light beacon withdrawn.

Victorian Notice 69(T)/2008 (AA333864)

No 52 light beacon (37 49.13 S 144 54'.99 E) has been withdrawn; a port lateral light buoy, Fl.R.2s, exists in situ.

Aus154 [NE 15/02/08]

NOTICES TO MARINERS for Aus158

496* AUSTRALIA - VICTORIA - Port Phillip - Nav aids.

Department of Primary Industries (AA331341)

Aus158 [443/2008]

Delete special light buoy 38 16.54 S 144 50.69 E

510(T)/2008 AUSTRALIA - VICTORIA - Port Phillip - Dredging operations.

Former Notice 419(T)/2008 is cancelled

Victorian Notice 68(T)/2008, 56(T)/2008 (AA332640, AA325795) The dredge Queen of the Netherlands is conducting dredging operations within the entrance channels to Port Phillip.

During the dredging operations the effective maintained depth of the Great Ship Channel will be 14 metres. The maximum permissible static draught of a vessel transiting the channel will be 11.6 metres at all tides; and maximum 12.1 metres with tidal assistance, subject to a minimum static under keel clearance of 2.4 metres, during the entire transit over Rip Bank and Nepean Bank.

Dredging will not impede the passage of commercial shipping. Vessels intending to use the Great Ship Channel must advise the Point Lonsdale Signal Station who will provide the dredge at least 30 minutes notice for the dredger to clear the channel. Dive vessel operators must also contact Point Lonsdale Signal Station on VHF Ch 12 or (03) 52581252 to obtain information on the movements of the dredger and commercial vessels prior to engaging in diving activities.

Aus158 [NE 27/04/07]

511(T)/2008 AUSTRALIA - VICTORIA - Port Phillip - Restricted areas.

Former Notice 420(T)/2008 is cancelled

Victorian Notice 55(T)/2008 (AA326107)

A restricted access area has been declared around the dredge vessels and the barge during their operation or presence in the Yarra River and Port Phillip as follows:

In the Yarra River an area comprising the port of Melbourne waters and any part of port of Melbourne land that is within 50 metres radius of the dredges Queen of the Netherlands or Cornelis Zanen, when

either vessel is in the Yarra River, in the waters of the port of Melbourne, north of an imaginary line connecting 37 51'.17 S 144 54'.48 E and 37 50'.97 S 144 54'.75 E.

In Port Phillip around the dredge vessels an area comprising the port of Melbourne waters and any part of port of Melbourne land that is within 200 metres radius of the dredges Queen of the Netherlands or Cornelis Zanen , when either vessel is in the waters of the port of Melbourne south of an imaginary line connecting 37 51'.17 S 144 54'.48 E and 37 50'.97 S 144 54'.75 E, being an area within Port Phillip (including Hobsons Bay) or at the Entrance (including the waters of Bass Strait).

In Port Phillip around the POMBAA Barge an area comprising the Port Melbourne waters that is within 750 metres radius of the barge and any replacement or additional barge used or intended for the transfer of dredged materials from a dredge vessel to the Port of Melbourne Dredged Material Ground.

Further details regarding the operations can be obtained from the Port of Melbourne Corporation's Channel Deepening website www.channelproject.com or on telephone 1-800 731 022.

(Note: The link was removed as the page is no longer available.)

Mariners are advised to navigate with caution in the area.

Aus158 [NE 27/04/07]

5 June 2008

Notices to Mariners Edition 11 - 36572

Wendell Raven, Thursday, 5 June 2008

Please note the following notices to mariners issued by the Australian Hydrographic Service.

More detailed information, along with notices for areas other than Victoria can be found the [Australian Hydrographic Service website](#).

Victorian notices can also be found on the Port of Melbourne and Parks Victoria websites.

(Note: The links were removed as the pages are no longer available.)

Notices for charts:

NOTICES TO MARINERS for Aus143

564(T)/2008 AUSTRALIA - VICTORIA - Port Phillip - Dredging operations.

Victorian Notice 72(T)/2008 (AA337621)

The barge POMBAA is anchored within the spoil ground bounded by;

37 59'.04 S 144 52'.98 E

37 59'.10 S 144 54'.14 E

38 01'.38 S 144 53'.46 E
38 01'.38 S 144 51'.60 E

A floating pipeline is connected to the barge and is marked by lights, Fl.Y.2s, along its length.

A restricted access area of 750 metres radius exists around the barge.

Aus143 [NE 27/04/07]

NOTICES TO MARINERS for Aus150

539* AUSTRALIA - VICTORIA - Western Port - ZOC diagram.
Australian Hydrographic Service (AA334314)

Aus150 [445/2008]

Substitute accompanying ZOC diagram for reliability diagram 38 31.00 S 145 32.00 E

You can access the accompanying block/plan by using the following
link:http://www.hydro.gov.au/n2m/2008/blocks/aus150_539_2008.pdf

NOTICES TO MARINERS for Aus151

540* AUSTRALIA - VICTORIA - Western Port - ZOC diagram.
Australian Hydrographic Service (AA334316)

Aus151 [445/2008]

Substitute accompanying ZOC diagram for reliability diagram 38 23.00 S 145 03.00 E

You can access the accompanying block/plan by using the following
link:http://www.hydro.gov.au/n2m/2008/blocks/aus151_540_2008.pdf

NOTICES TO MARINERS for Aus154

565(T)/2008 AUSTRALIA - VICTORIA - Port Phillip - Port Melbourne - River Yarra - Harbour works; traffic management system.

Victorian Notice 70(T)/2008 (AA336650)

Mariners are advised that vessel traffic management will be introduced to facilitate the works connected with the protection of services across the River Yarra, between a line joining beacons No 31 and No 32 and a line joining beacons No 37 and No 38B.

The works will be carried out continuously by the dredges Goomai and Storcken, supported by barges, tugs and survey vessels.

During this period, the River Yarra Channel between beacons No 31 and No 32 and beacons No 37 and No 38B, will be divided into 3 navigation lanes- East, Centre and West, each 50 metres wide.

Caution signs are displayed in the vicinity of Yarraville Wharves (Maribyrnong River), beacon No 48 (River Yarra) and beacon No 29 (River Yarra).

Traffic signs, indicating the lanes open to vessel movements have been installed at beacons 31, 32, 37 and 38B.

Lane closures and shipping movements will be regulated by the Port of Melbourne Corporation's Shipping Management Centre.

Between 0600 and 1400 construction vessels will conduct operations in the centre lane. During this period the centre and one side lane will be closed to all shipping movements. Only one lane will be open to vessels with a beam of less than 11 metres (as indicated by the traffic signs green arrow). A maximum speed of 8 knots applies.

Between 1400 and 0600 construction vessels will conduct operations in either the east lane or the west lane. During this period, the lane in which works are in progress will be closed to all shipping movements (as indicated by the traffic signs red cross). The centre lane and the lane not being worked will be open to all vessels with a beam of less than 32.3 metres, under specific shipping management procedures.

While a large vessel is transiting the works no other vessels will be permitted to pass the works (as indicated by the traffic signs three red crosses). Vessels with a beam of less than 11 metres must wait in the designated area specified by the patrol boats.

Vessels of beam greater than 32.3 metres will not be permitted to transit the works.

Further details regarding the operations can be obtained from the Port of Melbourne Corporation's Channel Deepening website www.channelproject.com or telephone 1 - 800 731 022.

(Note: The link was removed as the page is no longer available.)

Mariners are advised to navigate with caution in the area.

Aus154 [NE 15/02/08]

NOTICES TO MARINERS for Aus155

564(T)/2008 AUSTRALIA - VICTORIA - Port Phillip - Dredging operations.

Victorian Notice 72(T)/2008 (AA337621)

The barge POMBAA is anchored within the spoil ground bounded by;

37 59'.04 S 144 52'.98 E

37 59'.10 S 144 54'.14 E

38 01'.38 S 144 53'.46 E

38 01'.38 S 144 51'.60 E

A floating pipeline is connected to the barge and is marked by lights, Fl.Y.2s, along its length.

A restricted access area of 750 metres radius exists around the barge.

Aus155 [NE 27/04/07]

20 June 2008

Notices to Mariners Edition 12 - 36782

Wendell Raven, Friday, 20 June 2008

Please note the following notices to mariners issued by the Australian Hydrographic Service.

More detailed information, along with notices for areas other than Victoria can be found the [Australian Hydrographic Service website](#).

Victorian notices can also be found on the Port of Melbourne and Parks Victoria websites.

(Note: The links were removed as the pages are no longer available.)

Notices for charts:

NOTICES TO MARINERS for Aus150

593* AUSTRALIA - VICTORIA - Western Port - Chart notes; legends.
Australian Hydrographic Service (AA318722)

Aus150 [539/2008]

Delete legend, Inadequately Surveyed (see Note) 38 34.20 S 145 28.50 E
Delete legend, Inadequately Surveyed (see Note) 38 25.50 S 145 06.00 E
Delete legend, Inadequately Surveyed (see Note) 38 24.00 S 144 46.00 E
Delete note, INADEQUATELY SURVEYED 38 20.00 S 145 04.00 E

NOTICES TO MARINERS for Aus151

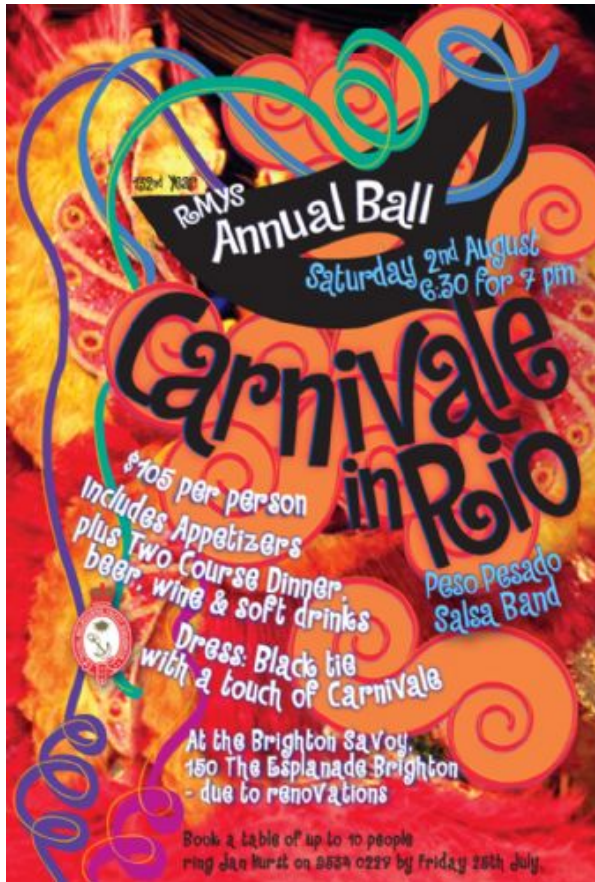
593* AUSTRALIA - VICTORIA - Western Port - Chart notes; legends.
Australian Hydrographic Service (AA318722)

Aus151 [540/2008]

Delete note, INADEQUATELY SURVEYED 38 22.90 S 145 06.00 E
Delete legend, Inadequately Surveyed (see Note) 38 32.20 S 145 17.00 E
Delete legend, Inadequately Surveyed (see Note) 38 26.00 S 145 06.00 E

3 July 2008

Annual Ball 2008 - 36903



Annual Ball 2008 - Carnivale in Rio

Thursday, 3 July 2008

"Carnivale in Rio" will be held at the Brighton Savoy 150 The Esplanade, Brighton on Saturday 2nd August 2008 @ 6.30pm. Please contact Jan Hurst on 9534 0227 for bookings

7 July 2008

Notices to Mariners Edition 13 - 36953

Wendell Raven, Monday, 7 July 2008

Please note the following notices to mariners issued by the Australian Hydrographic Service.

More detailed information, along with notices for areas other than Victoria can be found the [Australian Hydrographic Service website](#).

Victorian notices can also be found on the Port of Melbourne and Parks Victoria websites.

(Note: The links were removed as the pages are no longer available.)

Notices for charts:

NOTICES TO MARINERS for Aus155

677(T)/2008 AUSTRALIA - VICTORIA - Port Phillip - Altona - Harbour works.

Victorian Notice 80(T)/2008 (AA344156)

Works associated with the replacement of the middle boat ramp (37 51'.95 S 144 50'.89 E) are in progress.

During the works the middle boat ramp will be closed. The remaining ramps will be operational, except when divers are working in the water.

Mariners are advised to navigate with caution in the area.

Aus155 [NE 27/04/07]

23 July 2008

Notices to Mariners Edition 14 - 37147

Wendell Raven, Wednesday, 23 July 2008

Please note the following notices to mariners issued by the Australian Hydrographic Service.

More detailed information, along with notices for areas other than Victoria can be found the [Australian Hydrographic Service website](#).

Victorian notices can also be found on the Port of Melbourne and Parks Victoria websites.

(Note: The links were removed as the pages are no longer available.)

Notices for charts:

NOTICES TO MARINERS for Aus148

706* AUSTRALIA - BASS STRAIT - Hogan Group - Plan.

Australian Hydrographic Service (AA345795)

Aus148 (plan: Hogan Group) [579/2006]

Insert accompanying block 39 16.00 S 147 04.00 E

You can access the accompanying block, plan or note by using the following link:

http://www.hydro.gov.au/n2m/2008/blocks/aus148_706_2008.pdf

4 August 2008

Notices to Mariners Edition 15 - 37322

Wendell Raven, Monday, 4 August 2008

Please note the following notices to mariners issued by the Australian Hydrographic Service.

More detailed information, along with notices for areas other than Victoria can be found the [Australian Hydrographic Service website](#).

Victorian notices can also be found on the Port of Melbourne and Parks Victoria websites.

(Note: The links were removed as the pages are no longer available.)

Notices for charts:

NOTICES TO MARINERS for Aus148

743* AUSTRALIA - BASS STRAIT - ZOC diagram.
Australian Hydrographic Service (AA318722)

Aus148 (plan: Kent Group) [706/2008]
Substitute accompanying ZOC diagram for ZOC diagram 39 29.50 S 147 25.00 E

Aus148 (plan: Hogan Group) [706/2008]
Delete legend to Inadequately Surveyed (see ZOC Diagram) 39 14.40 S 147 04.60 E
Delete legend to Inadequately Surveyed (see ZOC Diagram) 39 16.60 S 146 56.60 E

You can access the accompanying block, plan or note by using the following link:
http://www.hydro.gov.au/n2m/2008/blocks/aus148_743_2008.pdf

NOTICES TO MARINERS for Aus152

742* AUSTRALIA - VICTORIA - Hanns Inlet - ZOC diagram.
Former Notice 388(T)/2008 is cancelled
Australian Hydrographic Service (AA318722)

Aus152 (plan: Hanns Inlet) [609/2007]
Insert accompanying ZOC diagram 38 23.40 S 145 11.60 E

You can access the accompanying block, plan or note by using the following link:
http://www.hydro.gov.au/n2m/2008/blocks/aus152_742_2008.pdf

28 August 2008

Women Sailing Makes A Splash - 37611

Erin McGavin, Thursday, 28 August 2008

Women Sailing Makes A Splash

Other Links

</site/yachting/rmys/downloads/WKR/Womans Sailing 2008.pdf>

New Members Party Night ...29th August 2008 - 37612



New Members Party Night 29th August 2008

Jan Fielding, Thursday, 28 August 2008

Come and listen to the new and improved version of "The Titantics" playing live in the Wet Bar.

Other Links

</site/yachting/rmys/downloads/Party Night 290808.jpg>

(Note: The link was removed as the page is no longer available.)

2 September 2008

Notices to Mariners Edition 17 - 37664

Wendell Raven, Tuesday, 2 September 2008

Note, there were no notices for Victorian charts in Edition 16.

Please note the following notices to mariners issued by the Australian Hydrographic Service.

More detailed information, along with notices for areas other than Victoria can be found the [Australian Hydrographic Service website](#).

Victorian notices can also be found on the Port of Melbourne and Parks Victoria websites.

(Note: The links were removed as the pages are no longer available.)

Notices for charts:

NOTICES TO MARINERS for Aus143

892(T)/2008 AUSTRALIA - VICTORIA - Port Phillip - Portarlington - Harbour works.

Victorian Notice 101/2008 (AA355738)

Pile driving and jetty repair works are in progress at the Portarlington Pier (38 06'.74 S 144 39'.15 E (WGS84 datum)).

A barge and workboat are onsite and will display the appropriate lights and signals.

The barge has deployed anchors marked by buoys.

Mariners are advised to navigate with caution in the area.

Aus143 [NE 27/04/07]

894(T)/2008 AUSTRALIA - VICTORIA - Port Phillip - Sandringham - Dredging operations.

Victorian Notice 102(T)/2008 (AA355806)

Dredging operations are in progress in Sandringham harbour and entrance (37 56'.50 S 144 59'.54 E).

The barge will be located within a 100 metre radius of position 37 56'.88 S 144 59'.34 E.

The barge has deployed anchors, marked by light buoys, Fl.Y.

A floating pipeline is connected to the barge and is marked by white floats.

All hazards to navigation will display appropriate lights and signals.

Mariners are advised to navigate with caution in the area.

Aus143 [NE 27/04/07]

NOTICES TO MARINERS for Aus150

862* AUSTRALIA - VICTORIA - Western Port - Newhaven - Beacon.
Parks Victoria (AA353813)

Aus150 (plan: The Narrows) [593/2008]
Move beacon 38 30.82 S 145 21.96 E
To 38 30.77 S 145 21.99 E

NOTICES TO MARINERS for Aus154

861* AUSTRALIA - VICTORIA - Port Phillip - Port Melbourne - River Yarra - Light beacon.
Victorian Notice 95/2008 (AA353925)

Aus154 [497/2008]
Delete light beacon 37 49.26 S 144 54.78 E

893(T)/2008 AUSTRALIA - VICTORIA - Port Phillip - Port Melbourne - River Yarra - Light beacon
withdrawn.

Victorian Notice 98/2008 (AA354281)
No 44 light beacon (37 49'.36 S 144 54'.26 E) has been withdrawn; a port lateral light
buoy, Fl.R.2s, exists in situ.

Aus154 [NE 15/02/08]

NOTICES TO MARINERS for Aus155

894(T)/2008 AUSTRALIA - VICTORIA - Port Phillip - Sandringham - Dredging operations.
Victorian Notice 102(T)/2008 (AA355806)
Dredging operations are in progress in Sandringham harbour and entrance (37 56'.50 S 144 59'.54 E).

The barge will be located within a 100 metre radius of position 37 56'.88 S 144 59'.34 E.

The barge has deployed anchors, marked by light buoys, Fl.Y.

A floating pipeline is connected to the barge and is marked by white floats.

All hazards to navigation will display appropriate lights and signals.

Mariners are advised to navigate with caution in the area.

Aus155 [NE 27/04/07]

15 September 2008

Notices to Mariners Edition 18 - 37913

Wendell Raven, Monday, 15 September 2008

Please note the following notices to mariners issued by the Australian Hydrographic Service.

More detailed information, along with notices for areas other than Victoria can be found the [Australian Hydrographic Service website](#).

Victorian notices can also be found on the Port of Melbourne and Parks Victoria websites.

(Note: The links were removed as the pages are no longer available.)

Notices for charts:

NOTICES TO MARINERS for Aus143

922* AUSTRALIA - VICTORIA - Port Phillip - Blairgowrie - Light buoy.
Victorian Notice 96/2008 (AA354441)

Aus143 (plan: Blairgowrie) [496/2008]
Delete depth, 6 9 m 38 20.98 S 144 46.15 E
Move light buoy 38 21.15 S 144 46.17 E
To 38 20.97 S 144 46.15 E

NOTICES TO MARINERS for Aus158

922* AUSTRALIA - VICTORIA - Port Phillip - Blairgowrie - Light buoy.
Victorian Notice 96/2008 (AA354441)

Aus158 [496/2008]
Move light buoy 38 21.15 S 144 46.17 E
To 38 20.97 S 144 46.15 E

30 September 2008

Notices to Mariners Edition 19 - 38157

Wendell Raven, Tuesday, 30 September 2008

Please note the following notices to mariners issued by the Australian Hydrographic Service.

More detailed information, along with notices for areas other than Victoria can be found the [Australian Hydrographic Service website](#).

Victorian notices can also be found on the Port of Melbourne and Parks Victoria websites.

(Note: The links were removed as the pages are no longer available.)

Notices for charts:

NOTICES TO MARINERS for Aus143

969* AUSTRALIA - VICTORIA - Port Phillip - Indented Head - Pipeline.
Parks Victoria (AA286713, AA286708)

Aus143 [922/2008]

Insert intake pipeline, between 38 08.96 S 144 43.07 E
38 09.05 S 144 43.39 E

991(T)/2008 AUSTRALIA - VICTORIA - Port Phillip - Restricted areas.

Former Notice 511(T)/2008 is cancelled

Victorian Notice 109(T)/2008 (AA358900)

A restricted access area has been declared around the dredge vessels and the barge during their operation or presence in Port Phillip and Yarra River as follows:

In Yarra River an area comprising the Port of Melbourne waters and any part of Port of Melbourne land that is within 100 metres radius of the dredges Queen of the Netherlands or Cornelis Zanen, when either vessel is in Yarra River, north of an imaginary line connecting 37 51'.17 S 144 54'.48 E and 37 50'.97 S 144 54'.75 E.

In Port Phillip around the dredge vessels an area comprising the Port of Melbourne waters and any part of port of Melbourne land that is within 200 metres radius of the dredges Queen of the Netherlands or Cornelis Zanen, when either vessel is south of an imaginary line connecting 37 51'.17 S 144 54'.48 E and 37 50'.97 S 144 54'.75 E, being an area within Port Phillip (including Hobsons Bay) or at the Entrance (including the waters of Bass Strait).

In Port Phillip around the POMBAA Barge an area comprising the Port of Melbourne waters that is within 750 metres radius of the barge and any replacement or additional barge used or intended for the transfer of dredged materials from a dredge vessel to the Port of Melbourne dredged material ground.

Further details regarding the operations can be obtained from the Port of Melbourne Corporation's Channel Deepening website www.channelproject.com or on telephone 1-800 731 022.

(Note: The link was removed as the page is no longer available.)

Mariners are advised to navigate with caution in the area.

Aus143 [NE 27/04/07]

NOTICES TO MARINERS for Aus144

991(T)/2008 AUSTRALIA - VICTORIA - Port Phillip - Restricted areas.

Former Notice 511(T)/2008 is cancelled

Victorian Notice 109(T)/2008 (AA358900)

A restricted access area has been declared around the dredge vessels and the barge during their operation or presence in Port Phillip and Yarra River as follows:

In Yarra River an area comprising the Port of Melbourne waters and any part of Port of Melbourne land that is within 100 metres radius of the dredges Queen of the Netherlands or Cornelis Zanen, when either vessel is in Yarra River, north of an imaginary line connecting 37 51'.17 S 144 54'.48 E and 37 50'.97 S 144 54'.75 E.

In Port Phillip around the dredge vessels an area comprising the Port of Melbourne waters and any part of port of Melbourne land that is within 200 metres radius of the dredges Queen of the Netherlands or Cornelis Zanen, when either vessel is south of an imaginary line connecting 37 51'.17 S 144 54'.48 E and 37 50'.97 S 144 54'.75 E, being an area within Port Phillip (including Hobsons Bay) or at the Entrance (including the waters of Bass Strait).

In Port Phillip around the POMBAA Barge an area comprising the Port of Melbourne waters that is within 750 metres radius of the barge and any replacement or additional barge used or intended for the transfer of dredged materials from a dredge vessel to the Port of Melbourne dredged material ground.

Further details regarding the operations can be obtained from the Port of Melbourne Corporation's Channel Deepening website www.channelproject.com or on telephone 1-800 731 022.

(Note: The link was removed as the page is no longer available.)

Mariners are advised to navigate with caution in the area.

Aus144 [NE 14/09/07]

NOTICES TO MARINERS for Aus150

971* AUSTRALIA - VICTORIA - Western Port - Newhaven - Beacons.
Parks Victoria (AA353815)

Aus150 (plan: The Narrows) [862/2008]

Delete depth, 0 7 m 38 30.82 S 145 22.13 E

Move beacon 38 30.85 S 145 22.15 E

To 38 30.84 S 145 22.14 E

Move beacon 38 30.79 S 145 22.20 E

To 38 30.78 S 145 22.19 E

NOTICES TO MARINERS for Aus154

991(T)/2008 AUSTRALIA - VICTORIA - Port Phillip - Restricted areas.

Former Notice 511(T)/2008 is cancelled

Victorian Notice 109(T)/2008 (AA358900)

A restricted access area has been declared around the dredge vessels and the barge during their operation or presence in Port Phillip and Yarra River as follows:

In Yarra River an area comprising the Port of Melbourne waters and any part of Port of Melbourne land that is within 100 metres radius of the dredges Queen of the Netherlands or Cornelis Zanen, when either vessel is in Yarra River, north of an imaginary line connecting 37 51'.17 S 144 54'.48 E and 37 50'.97 S 144 54'.75 E.

In Port Phillip around the dredge vessels an area comprising the Port of Melbourne waters and any part of port of Melbourne land that is within 200 metres radius of the dredges Queen of the Netherlands or Cornelis Zanen, when either vessel is south of an imaginary line connecting 37 51'.17 S 144 54'.48 E and 37 50'.97 S 144 54'.75 E, being an area within Port Phillip (including Hobsons Bay) or at the Entrance (including the waters of Bass Strait).

In Port Phillip around the POMBAA Barge an area comprising the Port of Melbourne waters that is within 750 metres radius of the barge and any replacement or additional barge used or intended for the transfer of dredged materials from a dredge vessel to the Port of Melbourne dredged material ground.

Further details regarding the operations can be obtained from the Port of Melbourne Corporation's Channel Deepening website www.channelproject.com or on telephone 1-800 731 022.

(Note: The link was removed as the page is no longer available.)

Mariners are advised to navigate with caution in the area.

Aus154 [NE 15/02/08]

992(T)/2008 AUSTRALIA - VICTORIA - Port Phillip - Hobsons Bay - Princes Pier - Trial nav aids.
Victorian Notice 116(T)/2008 (AA360957)
Lights, VQ(4)4s, exist in positions 37 50'.708 S 144 55'.549 E and 37 50'.700 S 144 55'.517 E.

A special light buoy, Fl(2)Y.4s, exists in position 37 50'.70 S 144 55'.36 E.

Aus154 [NE 15/02/08]

NOTICES TO MARINERS for Aus155

991(T)/2008 AUSTRALIA - VICTORIA - Port Phillip - Restricted areas.
Former Notice 511(T)/2008 is cancelled
Victorian Notice 109(T)/2008 (AA358900)

A restricted access area has been declared around the dredge vessels and the barge during their operation or presence in Port Phillip and Yarra River as follows:

In Yarra River an area comprising the Port of Melbourne waters and any part of Port of Melbourne land that is within 100 metres radius of the dredges Queen of the Netherlands or Cornelis Zanen, when either vessel is in Yarra River, north of an imaginary line connecting 37 51'.17 S 144 54'.48 E and 37 50'.97 S 144 54'.75 E.

In Port Phillip around the dredge vessels an area comprising the Port of Melbourne waters and any part of port of Melbourne land that is within 200 metres radius of the dredges Queen of the Netherlands or Cornelis Zanen, when either vessel is south of an imaginary line connecting 37 51'.17 S 144 54'.48 E and 37 50'.97 S 144 54'.75 E, being an area within Port Phillip (including Hobsons Bay) or at the Entrance (including the waters of Bass Strait).

In Port Phillip around the POMBAA Barge an area comprising the Port of Melbourne waters that is within 750 metres radius of the barge and any replacement or additional barge used or intended for the transfer of dredged materials from a dredge vessel to the Port of Melbourne dredged material ground.

Further details regarding the operations can be obtained from the Port of Melbourne Corporation's Channel Deepening website www.channelproject.com or on telephone 1-800 731 022.

(Note: The link was removed as the page is no longer available.)

Mariners are advised to navigate with caution in the area.

Aus155 [NE 27/04/07]

NOTICES TO MARINERS for Aus158

991(T)/2008 AUSTRALIA - VICTORIA - Port Phillip - Restricted areas.

Former Notice 511(T)/2008 is cancelled

Victorian Notice 109(T)/2008 (AA358900)

A restricted access area has been declared around the dredge vessels and the barge during their operation or presence in Port Phillip and Yarra River as follows:

In Yarra River an area comprising the Port of Melbourne waters and any part of Port of Melbourne land that is within 100 metres radius of the dredges Queen of the Netherlands or Cornelis Zanen, when either vessel is in Yarra River, north of an imaginary line connecting 37 51'.17 S 144 54'.48 E and 37 50'.97 S 144 54'.75 E.

In Port Phillip around the dredge vessels an area comprising the Port of Melbourne waters and any part of port of Melbourne land that is within 200 metres radius of the dredges Queen of the Netherlands or Cornelis Zanen, when either vessel is south of an imaginary line connecting 37 51'.17 S 144 54'.48 E and 37 50'.97 S 144 54'.75 E, being an area within Port Phillip (including Hobsons Bay) or at the Entrance (including the waters of Bass Strait).

In Port Phillip around the POMBAA Barge an area comprising the Port of Melbourne waters that is within 750 metres radius of the barge and any replacement or additional barge used or intended for the transfer of dredged materials from a dredge vessel to the Port of Melbourne dredged material ground.

Further details regarding the operations can be obtained from the Port of Melbourne Corporation's Channel Deepening website www.channelproject.com or on telephone 1-800 731 022.

(Note: The link was removed as the page is no longer available.)

Mariners are advised to navigate with caution in the area.

Aus158 [NE 27/04/07]

11 October 2008

Notices to Mariners Edition 20 - 38286

Wendell Raven, Saturday, 11 October 2008

Please note the following notices to mariners issued by the Australian Hydrographic Service.

More detailed information, along with notices for areas other than Victoria can be found the [Australian Hydrographic Service website](#).

Victorian notices can also be found on the Port of Melbourne and Parks Victoria websites.

(Note: The links were removed as the pages are no longer available.)

Notices for charts:

NOTICES TO MARINERS for Aus154

1032* AUSTRALIA - VICTORIA - Port Phillip - Hobsons Bay - Princes Pier - Light.
Victorian Notice 116(T)/2008 (AA360957)

Aus154 [861/2008]
Delete light 37 50.70 S 144 55.53 E

26 October 2008

Notices to Mariners Edition 21 - 38494

Wendell Raven, Sunday, 26 October 2008

Please note the following notices to mariners issued by the Australian Hydrographic Service.

More detailed information, along with notices for areas other than Victoria can be found the [Australian Hydrographic Service website](#).

Victorian notices can also be found on the Port of Melbourne and Parks Victoria websites.

(Note: The links were removed as the pages are no longer available.)

Notices for charts:

NOTICES TO MARINERS for Aus144

1085* AUSTRALIA - VICTORIA - Port Phillip - Point Nepean to Point Franklin - Light buoys.
Victorian Notice 122/2008 (AA364049)

Aus144 [384/2008]

Substitute special conical light buoy, Fl.Y.5s, without topmark for buoy 38 18.23 S 144 39.57 E
Substitute special conical light buoy, Fl.Y.5s, without topmark for buoy 38 17.94 S 144 39.14 E
Substitute special conical light buoy, Fl.Y.5s, without topmark for buoy 38 18.67 S 144 42.55 E
Substitute special conical light buoy, Fl.Y.5s, without topmark for buoy 38 18.81 S 144 42.75 E
Substitute special conical light buoy, Fl.Y.5s, without topmark for buoy 38 18.72 S 144 42.86 E
Substitute special conical light buoy, Fl.Y.5s, without topmark for buoy 38 18.57 S 144 42.68 E

NOTICES TO MARINERS for Aus155

1107(P)/2008 AUSTRALIA - VICTORIA - Melbourne - Light beacons to be established.
Victorian Notice 120(P)/2008 (AA364050)

Light beacons will be established as follows:

Position Remarks

No 2 37 55'.61 S 144 55'.52 E Fl(2)R.4s

No 4 37 55'.07 S 144 55'.54 E Fl(2)R.4s

No 5 37 54'.55 S 144 55'.70 E Fl(2)G.4s

Aus155 [NE 27/04/07]

NOTICES TO MARINERS for Aus158

1085* AUSTRALIA - VICTORIA - Port Phillip - Point Nepean to Point Franklin - Light buoys.
Victorian Notice 122/2008 (AA364049)

Aus158 [922/2008]

Substitute special conical light buoy, Fl.Y.5s, without topmark for buoy 38 17.94 S 144 39.14 E
Substitute special conical light buoy, Fl.Y.5s, without topmark for buoy 38 18.23 S 144 39.57 E
Substitute special conical light buoy, Fl.Y.5s, without topmark for buoy 38 18.81 S 144 42.75 E
Substitute special conical light buoy, Fl.Y.5s, without topmark for buoy 38 18.72 S 144 42.86 E

30 October 2008

Go Sailing at St. Kilda - Open Day Sunday 9 th Nov 2008 - 38588



'Go Sailing' free at Royal Melbourne Yacht Squadron's Open Day 9th Nov. 2008

Leigh Brennan-Smith, Thursday, 30 October 2008

Come and try sailing at RMYS's Go Sailing Open Day 9 th Nov 2008 10 am to 4 pm. Free yacht and dinghy sailing available on Port Phillip - booking essential. More info

Go Sailing at St.Kilda - Open Day Sunday 9th November, 2008

Free sailing and fun at one of Melbourne's landmark yacht clubs

Come and enjoy the delights of sailing with Royal Melbourne Yacht Squadron's open day on Sunday 9 th November 2008 between 10 am and 4 pm.

Enjoy a free sailing experience on an ocean going yacht or sailing dinghy at one of Melbourne's oldest yacht clubs.

Our open day is planned to encourage all Victorians regardless of boating or sailing experience to come and try sailing. The event is part of the "Go Sailing Day" in which many Victorian yacht clubs open their doors and provide on water sailing opportunities.

Enjoy the delights of Port Phillip, the Melbourne skyline, St.Kilda beach, penguins and the sea breeze on one of our members' yachts. This experience is not to be missed and has lead to many visitors to become regular sailors and members of Royal Melbourne Yacht Squadron.

We also have our newly renovated Clubhouse open with refreshments, lunch and snack foods available in the members bar all day. Membership special offers will also be available with Club membership starting from as low as \$20 per month. Conditions apply.

Bookings are essential for Open Day as these days have proven to be very popular in the past. You must contact the Squadron on office on (03) 9534 0227 during business hours or email jan@rmys.com.au .

Come down and see us and try sailing

Some important details:

You must book in advance to ensure a place on a yacht is available to you. Dinghy sailing off the beach does not require a booking.

You will need appropriate clothing for boating including a light jacket, sun protection shirt, shorts or pants and sports shoes with non - marking soles. If your footwear is not acceptable to the boat owner they may ask you to remove your shoes onboard. You may get wet, so a change of clothes would be advisable. A hat, sunglasses and sunscreen are also recommended. We will supply Personal Flotation Devices (PFD) and may require you to wear one.

The sailing experience will take about 45 minutes to 1 hour and we need you to arrive approx. 1 hour before your allotted time. If you are not on time we may allocate other people to take your place.

Yachting is an active water sport suitable for people of general fitness across most age groups. We will require you to complete a registration form which includes a waiver. For your own safety you will need to agree to obey all instructions (including the use of safety equipment such as PFD's) given to you by our organisers and boat owners and their crew.

Children under the age of 7 years are not generally suited to keelboat sailing and we reserve the right to restrict sailing experiences to children and any adult who, in our opinion, is not suited to the physical demands of yachting. All children under the age of 12 must be supervised by a responsible adult.

We can generally accommodate groups of 2- 3 people in the same group, however this varies according to the yacht and the boat owners requirements. We will do our best to keep you together - but no guarantee.

If you have any questions please contact the Squadron office on (03) 9534 0227 during business hours or email jan@rmys.com.au .

8 November 2008

Notices to Mariners Edition 22 - 38751

Wendell Raven, Saturday, 8 November 2008

Please note the following notices to mariners issued by the Australian Hydrographic Service.

More detailed information, along with notices for areas other than Victoria can be found the [Australian Hydrographic Service website](#).

Victorian notices can also be found on the Port of Melbourne and Parks Victoria websites.

(Note: The links were removed as the pages are no longer available.)

Notices for charts:

NOTICES TO MARINERS for Aus143

1162(T)/2008 AUSTRALIA - VICTORIA - Port Phillip - Limeburners Bay - Harbour works.

Victorian Notice 126(T)/2008 (AA366843, AA367247, AA367243) Harbour works associated with the construction of a jetty (38 04'.38 S 144 24'.17 E (WGS84 datum)) are in progress.

All hazards to navigation will display the appropriate lights.

Mariners are advised to navigate with caution in the area.

Aus143 [NE 27/04/07]

NOTICES TO MARINERS for Aus151

1140* AUSTRALIA - VICTORIA - Western Port - Flinders Bight - Light beacon.
Australian Hydrographic Service (AA365610, AA365612)

Aus151 [593/2008]

Amend light to Q(4)Y.12s 3M 38 27.12 S 145 02.85 E

NOTICES TO MARINERS for Aus155

1139* AUSTRALIA - VICTORIA - Port Phillip - Port Melbourne Channel - Light beacons.
Former Notice 1107(P)/2008 is cancelled
Victorian Notice 125/2008 (AA366424)

Aus155 [497/2008]

Insert port lateral light beacon, Fl(2)R.4s No2, with topmark 37 55.61 S 144 55.52 E

Insert port lateral light beacon, Fl(2)R.4s No4, with topmark 37 55.07 S 144 55.54 E

Insert starboard lateral light beacon, Fl(2)G.4s No5, with topmark 37 54.55 S 144 55.70 E

24 November 2008

Notices to Mariners Edition 23 - 38982

Wendell Raven, Monday, 24 November 2008

Please note the following notices to mariners issued by the Australian Hydrographic Service.

More detailed information, along with notices for areas other than Victoria can be found the [Australian Hydrographic Service website](#).

Victorian notices can also be found on the Port of Melbourne and Parks Victoria websites.

(Note: The links were removed as the pages are no longer available.)

Notices for charts:

NOTICES TO MARINERS for Aus154

1212(T)/2008 AUSTRALIA - VICTORIA - Port Phillip - Port Melbourne - River Yarra - Light buoys; restricted

area.

Victorian Notice 129(T)/2008 (AA368449)

Special light buoys, Fl.Y.1 5s, have been established in the following positions:

37 49'.223 S 144 55'.703 E

37 49'.226 S 144 55'.735 E

37 49'.230 S 144 55'.769 E

37 49'.234 S 144 55'.803 E

37 49'.237 S 144 55'.837 E

The wharf south of the light buoys is considered unstable.

Mariners are advised that entry into the waters south of the above line of buoys is prohibited.

Aus154 [NE 15/02/08]

26 November 2008

Christmas Lunch at Royal Melbourne Yacht Squadron - 38996



Christmas Lunch at RMYS

Leigh Brennan-Smith, Wednesday, 26 November 2008

Join us for Xmas lunch on Sunday the 14 December, 2008 in the newly transformed Harbour Room. Bookings are essential. Invite your friends or crew and book a table now! Contact the Squadron office.

Join us for a Members Christmas Lunch at Royal Melbourne Yacht Squadron Sunday 14th December,

2008 between 12 - 4 pm

Invite your family, friends or crew and book a table to enjoy the newly transformed Harbour Room.

A two - course meal will be served to your table with drinks at Member prices.

Adults are \$49.00 each and children up to and including 12 years are \$25.00 each.

Santa will visit by boat weather permitting.

Bring a wrapped and marked present if you want Santa to provide a present to someone you know.

Book a table now by contacting the Squadron Office on 9534.0227 or email office@rmys.com.au

Bookings are essential and close on the 9th December 2008.

3 December 2008

Employment opportunities - 39099



This could be your workplace! New job opportunities at Royal Melbourne Yacht Squadron

Leigh Brennan-Smith, Wednesday, 3 December 2008

Royal Melbourne Yacht Squadron has 3 new opportunities to join one of Melbourne's iconic Yacht Clubs.

Employment opportunities

Recent staff changes at Royal Melbourne Yacht Squadron have opened up new opportunities for dynamic people seeking employment in one of Melbourne's iconic yacht clubs. Please see review the position descriptions below and follow the instructions for forwarding your application to Royal Melbourne Yacht Squadron.

Race Director

Manage all yacht racing activities at Royal Melbourne Yacht Squadron in this new senior principal race officer role. This is a 3 day per week paid employment position.

The job description for this role is downloadable here: [Race Director](#)

This job is also advertised on SEEK

Please send a covering letter along with your C.V. of not more than 5 pages by mail or email.

The contact for the Race Director position is Leigh Brennan-Smith, Royal Melbourne Yacht Squadron on 03 9534 0227. Applications to be received by close of business 22 December, 2008 to:

The Chief Executive Officer,
Royal Melbourne Yacht Squadron,
PO Box 2001,
St.Kilda West, Victoria, 3184

or emailed to manager@rmys.com.au

Sailing Administration Clerk

This new administration role will co-ordinate yacht racing activities, marina administration and undertake office duties at Royal Melbourne Yacht Squadron, working alongside with the new Race Director. This is a 3 day per week paid employment position suited to a person with high level clerical skills who loves sailing.

The job description for this role is downloadable here: [Sailing Administration Clerk](#)

This job is also advertised on SEEK

Please send a covering letter along with your C.V. of not more than 5 pages by mail or email.

The contact for the Sailing Administration position is Leigh Brennan-Smith, Royal Melbourne Yacht Squadron on 03 9534 0227. Applications to be received by close of business 22 December, 2008 to:

The Chief Executive Officer,
Royal Melbourne Yacht Squadron,
PO Box 2001,
St.Kilda West, Victoria, 3184

or emailed to: manager@rmys.com.au

Cactus Cup 2008 photos - 39102



Winner of the 2008 Cactus Cup, S425 "Silicon Chip"

Skipper: Jack Setton

Photograph: Harry Leggett

Leigh Brennan-Smith, Wednesday, 3 December 2008

The famous Cactus Cup, first run in 1922, was sailed on Saturday 29th November, 2008 with 30 Squadron yachts racing.

The 2008 Cactus Cup at Royal Melbourne Yacht Squadron

The famous Cactus Cup was run again on Saturday 29th November, 2008 at Royal Melbourne Yacht Squadron.

Background to the Cactus Cup

This prestigious Squadron race had its origins in the Depression era in St.Kilda when many members were out of work and money and trophies were in short supply.

The cactus refers to the donkey and cactus story popular at the time.

In the Depression men went looking for work each Monday and when they were unsuccessful, they went, in their words, " Back to the Cactus".

According to the Squadron trophy register, the Cactus Cup race, to be free of entry fees, was conceived by H.A.(Toby) Armstrong and backed by Bert Bryant, Ivor Bowles and Jim Thorpe. The race was first sailed on March 25, 1922 when 9 yachts sailed with sealed handicaps over a 5 mile rectangular course. The winner was the yacht Helen, skippered by D.Dowse.

The Cactus Cup was then sailed again on April 12, 1930 and from then on became an annual event. In that year the crew of the winning yacht Petrel, skippered by Stan Gamble, had to organise a mussel

supper and informal musical evening in the Spar Room, now the Wet Bar. In subsequent years it developed further so that the crew of the winning yacht had to collect mussels from the St.Kilda pier on the first Saturday in July and prepare them for the race crews. The Club provided a keg of beer.

The Cactus Cup perpetual trophy, complete with distinctive donkey on the top, was donated by Jim Thorpe in May, 1940 and was first presented to Barney Snider, skipper of Eun - Na - Mara. Following Jim Thorpe's death in 1944, Ivor Bowles continued the tradition until his death in 1970, when Otto Meik took over the tradition. Due to pollution in Port Phillip, the collection of mussels from the pier was wisely stopped about this time and bottled mussels, beer and frankfurts took over.

Last Saturday's Races

In overcast conditions 30 Squadron yachts entered the Cactus Cup with two races conducted over a laid course. Conditions improved during the day with sunny breaks and winds up to 20 knots. A large crowd of 160 crew and friends attended the traditional mussel and frankfurt festivities in the yard.

Full race results are available at [Cactus Cup/Edward Lumley Race 2](#)

Winners were:

Club Handicap and Provisional Winner: S425 Silicon Chip Skipper: Jack Setton

AMS: S62 Remedy Skippers: Brian Burggraaf & Russell Hibbert

IRC: S62 Remedy Skippers: Brian Burggraaf & Russell Hibbert

Photo's taken by Past Commodore, Harry Leggett aboard Albatross



The Cactus Cup
donated in 1940 by
Jim Thorpe



Cactus Cup 2008



Cactus Cup 2008



Cactus Cup 2008



Cactus Cup 2008



Cactus Cup 2008



Cactus Cup 2008



Cactus Cup 2008

Cactus Cup 2008



Cactus Cup 2008

Cactus Cup 2008



Cactus Cup 2008

Cactus Cup 2008



Cactus Cup 2008

Cactus Cup 2008



Cactus Cup 2008

4 December 2008

Notices to Mariners Edition 24 - 39122

Wendell Raven, Thursday, 4 December 2008

Please note the following notices to mariners issued by the Australian Hydrographic Service.

More detailed information, along with notices for areas other than Victoria can be found the [Australian Hydrographic Service website](#).

Victorian notices can also be found on the Port of Melbourne and Parks Victoria websites.

(Note: The links were removed as the pages are no longer available.)

Notices for charts:

NOTICES TO MARINERS for Aus141

1244* AUSTRALIA - VICTORIA - Cape Otway to Apollo Bay - Depths.
Deakin University (AA370664) (DHDB 1077456, 1077515)

Aus141 (plan: Apollo Bay) [720/2005]

Delete depth, 19 7 m, and enclosing contour 38 45.00 S 143 42.90 E

NOTICES TO MARINERS for Aus143

1259(T)/2008 AUSTRALIA - VICTORIA - Port Phillip - Patterson River - Shoaling.

Victorian Notice 134(T)/2008 (AA371539)

Shoaling, with a least depth of 0.5 metres , exists within the entrance to Patterson River (38 04'.43 S 145 07'.12 E)

Mariners are advised to navigate with caution in the area.

Aus143 [NE 27/04/07]

6 December 2008

CLUB MARINE SERIES RACE 3 - 39136

Jan Fielding, Saturday, 6 December 2008

CLUB MARINE SERIES RACE 3

Hosted by Royal Melbourne Yacht Squadron:

Protest Schedule from Race 3 now posted

Club Marine Range Series Race 3/6 - Schedule of Protest Hearings								
No.	Protestor	Protestee	Date	Time	Linked to	Type	Div	Note
R6. 1	Georgia	Race C'tee	Thu 11 Dec 08	7.00pm	R6.2	R	0	Change of course at weather mark 3
R6. 2	Goldfinger	Race C'tee	Thu 11 Dec 08	7.00pm	R6.1	R	0	Change of course at weather mark 3
R3. 3	Magic Bullet	Anna	Thu 18 Dec 08	7.00pm		P2	2	Port starboard
R3. 4	Anna	Magic Bullet	Thu 18 Dec 08	7.00pm	R6.5	P2	2	Approaching 2nd windward mark
R3. 5	Magic Bullet	Anna	Thu 18 Dec 08	7.00pm	R6.4	P2	2	Approaching 2nd windward mark
R3. 6	Mystery	Corsair 4	Thu 11 Dec 08	7.45pm		P2	2	Port starboard
R3. 7	Upbeat	Race C'tee	Thu 11 Dec 08	8.30pm		R	2	Course configuration

All hearings located at Royal Melbourne Yacht Squadron Pier Road, St. Kilda, 3182

Entrants Here: http://www.topyachtsoftware.com/db/aus/series_entries_display.php

Results Div 0

http://www.yachting.org.au/site/yachting/results/yv/2008/range/hc_res_d0/series.htm

Results Div 1,2,3

http://www.yachting.org.au/site/yachting/results/yv/2008/range/hc_res_d123/series.htm

Cheers

Dennis Livingston (PRO) and the Team at RMYS.

22 December 2008

Notices to Mariners Edition 25 - 39366

Wendell Raven, Monday, 22 December 2008

Please note the following notices to mariners issued by the Australian Hydrographic Service.

More detailed information, along with notices for areas other than Victoria can be found the [Australian Hydrographic Service website](#).

Victorian notices can also be found on the Port of Melbourne and Parks Victoria websites.

(Note: The links were removed as the pages are no longer available.)

Notices for charts:

NOTICES TO MARINERS for Aus143

1324(T)/2008 AUSTRALIA - VICTORIA - Port Phillip - Entrance Deep - Underwater survey work.

Former Notice 132(T)/2008 is cancelled

Victorian Notice 141(T)/2008 (AA374967)

Diving and Remote Operating Vehicle (ROV) surveys of the Rip Bank will be conducted along the Entrance Deep walls (38 17'.9 S 144 38'.1 E) in way of the entrance channels during the following periods;

27 December 2008 to 30 December 2008

8 January 2009 to 13 January 2009

27 January 2009 to 29 January 2009

The surveys will commence at times of predicted slack water and continue up to one hour thereafter.

The vessel ORCA can be contacted on VHF Ch 12 and Ch 16 or on mobile 0407088840.

All entrance channels will be closed to shipping during certain periods when underwater activities take place in the Great Ship Channel.

The Eastern Ship Channel and Outer Eastern Channel may remain open to shipping when underwater activities take place in the Western Ship Channel and/or Outer Western Channel. During the closure periods vessels must not pass or overtake in the Eastern Ship Channel and Outer Eastern Channel.

Details of the planned daily program can be obtained from Point Lonsdale Signal Station on VHF Ch 12.

Vessels intending to use any of the entrance channels should make early contact with Point Lonsdale Signal Station.

Mariners are advised to navigate with caution in the area.

Aus143 [NE 27/04/07]

1328(T)/2008 AUSTRALIA - VICTORIA - Port Phillip - Mordialloc - Shoaling.

Victorian Notice 137(T)/2008 (AA374620)

Shoaling, with depths 0.5m to 1m, exist within the entrance to Mordialloc Creek (38 00'.65 S 145 05'.07 E).

Mariners are advised to navigate with caution in the area.

Aus143 [NE 27/04/07]

NOTICES TO MARINERS for Aus144

1324(T)/2008 AUSTRALIA - VICTORIA - Port Phillip - Entrance Deep - Underwater survey work.

Former Notice 132(T)/2008 is cancelled

Victorian Notice 141(T)/2008 (AA374967)

Diving and Remote Operating Vehicle (ROV) surveys of the Rip Bank will be conducted along the Entrance Deep walls (38 17'.9 S 144 38'.1 E) in way of the entrance channels during the following periods;

27 December 2008 to 30 December 2008

8 January 2009 to 13 January 2009

27 January 2009 to 29 January 2009

The surveys will commence at times of predicted slack water and continue up to one hour thereafter.

The vessel ORCA can be contacted on VHF Ch 12 and Ch 16 or on mobile 0407088840.

All entrance channels will be closed to shipping during certain periods when underwater activities take place in the Great Ship Channel.

The Eastern Ship Channel and Outer Eastern Channel may remain open to shipping when underwater activities take place in the Western Ship Channel and/or Outer Western Channel. During the closure periods vessels must not pass or overtake in the Eastern Ship Channel and Outer Eastern Channel.

Details of the planned daily program can be obtained from Point Lonsdale Signal Station on VHF Ch 12.

Vessels intending to use any of the entrance channels should make early contact with Point Lonsdale Signal Station.

Mariners are advised to navigate with caution in the area.

Aus144 [NE 14/09/07]

NOTICES TO MARINERS for Aus155

1328(T)/2008 AUSTRALIA - VICTORIA - Port Phillip - Mordialloc - Shoaling.

Victorian Notice 137(T)/2008 (AA374620)

Shoaling, with depths 0.5m to 1m, exist within the entrance to Mordialloc Creek (38 00'.65 S 145 05'.07 E).

Mariners are advised to navigate with caution in the area.

Aus155 [NE 27/04/07]

NOTICES TO MARINERS for Aus158

1324(T)/2008 AUSTRALIA - VICTORIA - Port Phillip - Entrance Deep - Underwater survey work.

Former Notice 132(T)/2008 is cancelled

Victorian Notice 141(T)/2008 (AA374967)

Diving and Remote Operating Vehicle (ROV) surveys of the Rip Bank will be conducted along the Entrance Deep walls (38 17'.9 S 144 38'.1 E) in way of the entrance channels during the following periods;

27 December 2008 to 30 December 2008

8 January 2009 to 13 January 2009

27 January 2009 to 29 January 2009

The surveys will commence at times of predicted slack water and continue up to one hour thereafter.

The vessel ORCA can be contacted on VHF Ch 12 and Ch 16 or on mobile 0407088840.

All entrance channels will be closed to shipping during certain periods when underwater activities take place in the Great Ship Channel.

The Eastern Ship Channel and Outer Eastern Channel may remain open to shipping when underwater activities take place in the Western Ship Channel and/or Outer Western Channel. During the closure periods vessels must not pass or overtake in the Eastern Ship Channel and Outer Eastern Channel.

Details of the planned daily program can be obtained from Point Lonsdale Signal Station on VHF Ch 12.

Vessels intending to use any of the entrance channels should make early contact with Point Lonsdale Signal Station.

Mariners are advised to navigate with caution in the area.

Aus158 [NE 27/04/07]
