



# Ruth Nangle Trophy and Jeanette Turnbull Trophy

## Hosted by

### Royal Melbourne Yacht Squadron

## **SUPPLEMENT TO RMYS SAILING INSTRUCTIONS V 6.0**

### **1. Rules**

- 1.1. The event will be governed by the rules as defined in The Racing Rules of Sailing.
- 1.2. RMYS Sailing Instructions V6.0, the Ruth Nangle and Jeanette Turnbull Supplementary Sailing Instructions, the AMS rating system, the IRC rules parts 1, 2 and 3, the Yachting Victoria handicap system and the requirements of the Port of Melbourne Corporation (PoMC) will apply.
- 1.3. AS special regulations Part 1 Sections 1-6, Category 6 for racing boats shall apply.
- 1.4. All yachts shall complete a crew declaration as part of the online entry form. This may be updated up until 1 hour prior to the warning signal.
- 1.5. No anchor shall be carried on deck forward of the stem or with any part protruding outboard.
- 1.6. Spinnakers are permitted for the pursuit race. This changes RMYS Sailing Instruction V5.0 Clause 2.1.
- 1.7. All yachts will need to sign on via radio (Ch. 72) before the warning signal of each race. Failure to do so may result in being scored DSQ. The sign on procedure is detailed in Appendix A.
- 1.8. All yachts must give way to commercial vessels. Failure to do so may result in being scored DSQ.
- 1.9. All yachts must radio William Paterson (VHF Ch. 72) as soon as practical after rounding R1 during the Ruth Nangle Trophy. Failure to do so may result in being scored DSQ.
- 1.10. All yachts must radio the Squadron Tower (VHF Ch. 72) as soon as practical after rounding RBYC 2 during the Jeanette Turnbull Trophy. Failure to do so may result in being scored DSQ.

### **2. Schedule**

<b>Day</b>	<b>Date</b>	<b>Warning Signal</b>	<b>Event</b>	<b>Type</b>	<b>Warning Signal Identifier</b>
Saturday	23 February 2019	0755	Ruth Nangle Trophy	Passage/Pursuit	Course Flag + Number Board "00"
Sunday	24 February 2019	0925	Jeanette Turnbull Trophy	Passage	Code Flag K

### **3. The Start**

- 3.1. The Start Line for the Ruth Nangle Trophy will be a Tower Start as described in the RMYS Sailing Instructions.
- 3.2. The Start Line for the Jeanette Turnbull Trophy shall be between an orange inflatable mark and the SBSC Committee boat.
- 3.3. A standard five minute starting sequence will be used as per Rule 26.

### **4. The Courses**

- 4.1. The Courses for the Ruth Nangle Trophy and Jeanette Turnbull Trophy are tabled in Appendix A. They include the order in which marks are to be passed, and the side on which each mark is to be passed when rounding.

**5. Marks**

5.1. The white ensign inflatable turning mark listed in the courses for the Jeanette Turnbull will be rounded as per the flag displayed on the committee boat at the time of the start sequence. If a red flag is displayed the mark must be rounded to port. If a green flag is displayed the mark must be rounded to starboard.

**6. Obstructions**

6.1. The following Aquaculture Fisheries Reserves shall be considered as obstructions:

- 6.1.1. Beaumaris – (25ha) is located in Beaumaris Bay about 0.64km offshore from Table Rock Point
- 6.1.2. Mount Martha – (150ha) is located about 0.75km offshore from Fossil Beach
- 6.1.3. Dromana – (20ha) is located about 0.78km offshore from Martha Point

**7. The Finish Line**

- 7.1. The Finish Line for the Ruth Nangle Trophy will be between the Green Pile and the Safety Beach Sailing Club tower as per the diagram in Appendix A.
- 7.2. The Finish Line for the Jeanette Turnbull Trophy will be a Breakwater Finish as described in the RMYS Sailing Instructions.

**8. Time Limit**

8.1. Any yacht finishing after the designated time limit shall be scored DNF.

Day	Date	Time Limit
Saturday	23 February 2019	1959hrs
Sunday	24 February 2019	1958hrs

**9. Radio Communication**

9.1. Except in an emergency, a boat that is racing shall not make voice or data transmissions and shall not receive voice or data communication that is not available to all boats.

**10. Prizes**

10.1. The Ruth Nangle Trophy and Jeanette Turnbull Trophy will be presented to the winners of each race at the RMYS Presentation Night. Additional prizes will be awarded at the discretion of the Sailing Committee.

**11. Disclaimer of Liability**

11.1. Competitors participate in the races entirely at their own risk. See RRS 4, Decision to Race. The organising authority will not accept any liability for material damage or personal injury or death sustained in conjunction with or prior to, during or after the races.

**12. Insurance**

12.1. All entrants shall carry third party and public liability insurance of not less than AUD10 Million per event valid for all races.

**13. Further Information**

For further information please contact:  
Alicia Rae – RMYS Sailing Coordinator  
Phone: 03 9534 0227 Email: [racing@rmys.com.au](mailto:racing@rmys.com.au)

## Appendix A

### Radio Sign On

i. A pre-race sign on schedule will be conducted by RMYS on VHF channel 72. Yachts will be called in the order they appear on the starters list, 30 minutes prior to their allocated start time (Ruth Nangle) and 30 minutes prior to the warning signal (Jeanette Turnbull).

Yachts should respond: "(Boat Name) is a starter, (xx) persons on board, over"

ii. Yachts who do not respond on the first call must wait until they are re-called at the end of the schedule.

iii. Failure to sign on at the pre-race schedule shall result in the yacht being scored DNS.

### Ruth Nangle

#### Course 1 – Approx. 28M

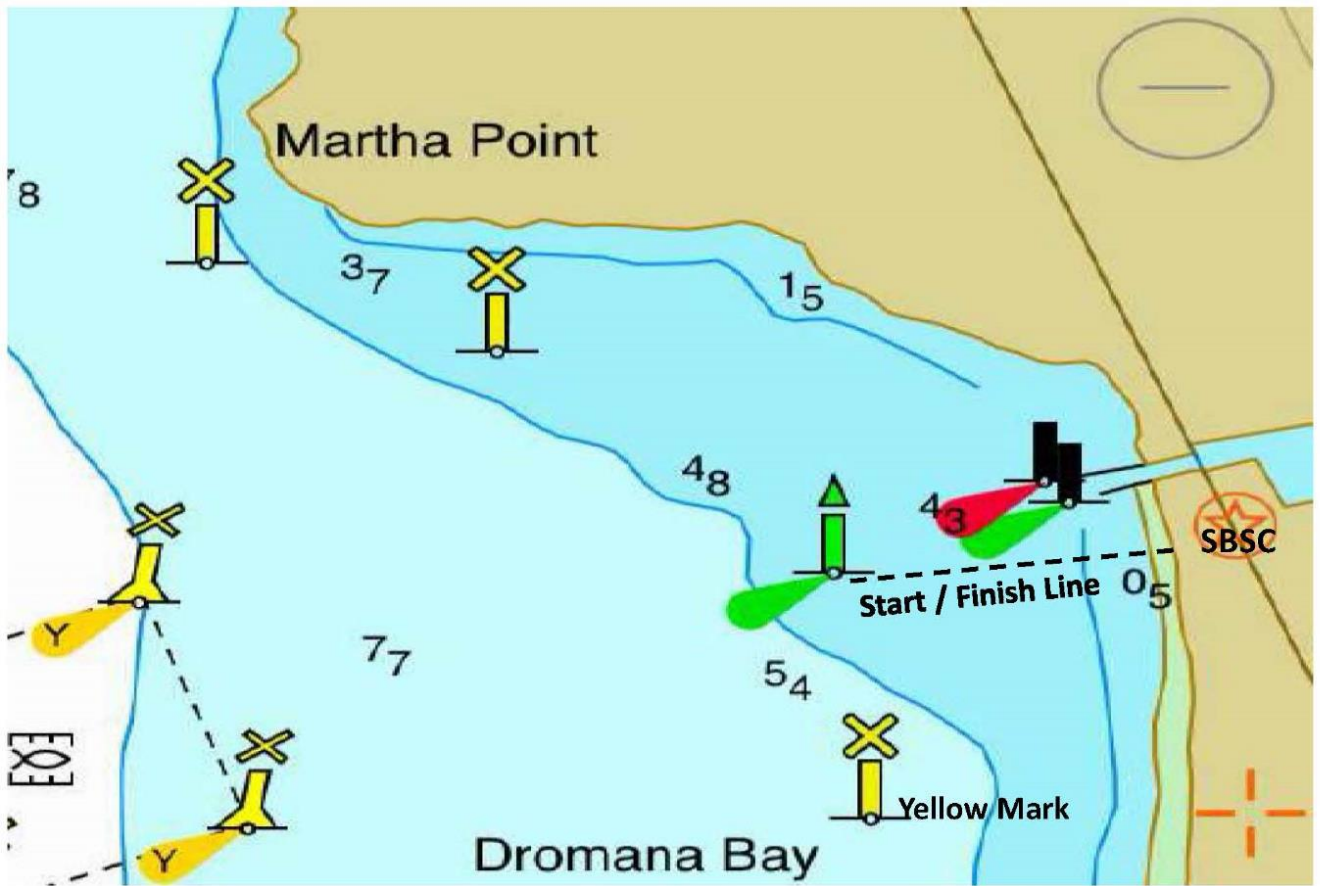
Mark	Lat S (approx.)	Long E (approx.)	Distance to next mark (approx.)
Breakwater Start			0.40M
RMYS E (S)	37° 52.14	144° 57.74	3.20M
RBYC 2 (S)	37° 55.40	144° 57.37	2.15M
Fawkner Beacon (P)	37° 56.93	144° 56.61	14.40M
MYC C (S)	38° 11.00	145° 00.28	5.60M
R1 (P)	38° 16.35	144° 58.44	2.00M
Yellow Mark (P)	38° 18.62	144° 59.221	
Green Pile (P) – Finish	38° 18.38	144° 59.31	

Please see below for diagram of Yellow Mark, Green Pile and Finish Line

#### Course 2 – Approx. 32M

Mark	Lat S (approx.)	Long E (approx.)	Distance to next mark (approx.)
Breakwater Start			0.40M
RMYS E (S)	37° 52.14	144° 57.74	3.20M
RBYC 2 (S)	37° 55.40	144° 57.37	2.15M
Fawkner Beacon (P)	37° 56.93	144° 56.61	9.20M
Carrum 2 (S)	38° 03.03	145° 04.65	8.60M
MYC C (S)	38° 11.00	145° 00.28	5.60M
R1 (P)	38° 16.35	144° 58.44	2.00M
Yellow Mark (P)	38° 18.619	144° 59.221	
Green Pile (P) – Finish	38° 18.38	144° 59.31	

Please see following diagram of Yellow Mark, Green Pile and Finish Line



Not to Scale

**Jeanette Turnbull**  
**Course 1 – Approx. 27M**

Mark	Lat S (approx.)	Long E (approx.)	Distance to next mark (approx.)
Boat Start			
White inflatable turning mark	Approx. 1.0M to windward of start boat		
R1 (S)	38° 16.35	144° 58.44	5.60M
MYC C (P)	38° 11.00	145° 00.28	14.40M
Fawkner Beacon (S)	37° 56.93	144° 56.61	2.15M
RBYC 2 (P)	37° 55.40	144° 57.37	3.20M
RMYS E (P)	37° 52.14	144° 57.74	0.40M
Breakwater Finish			

**Course 2 – Approx. 30M**

Mark	Lat S (approx.)	Long E (approx.)	Distance to next mark (approx.)
Boat Start			
White inflatable turning mark	Approx. 1.0M to windward of start boat		
R1 (S)	38° 16.35	144° 58.44	5.60M
MYC C (P)	38° 11.00	145° 00.28	8.60M
Carrum 2 (P)	38° 03.03	145° 04.65	9.20M
Fawkner Beacon (S)	37° 56.93	144° 56.61	2.15M
RBYC 2 (P)	37° 55.40	144° 57.37	3.20M
RMYS E (P)	37° 52.14	144° 57.74	0.40M
Breakwater Finish			